

BOARD OF EDUCATION SUMMARY

Philip Streifer, Phd. Superintendent of School
129 Church Street
Main Number: 584-7000

Service Narrative

The Bristol Public School system provides educational services ranging from pre-school programs through adult education programs. Within the system, there are ten elementary schools, which accommodate grades kindergarten through five; three middle schools, which provide programs for grades six, seven and eight; and two high schools, which are comprehensive high schools for grades nine through twelve.

In addition to these schools, alternative education programs are provided at the Bristol Community Senior Center. Bristol maintains an extensive special education program with a variety of services provided for handicapped and learning disabled students from pre-school to age twenty-one. Bristol's program for gifted and talented children includes special programs and resource services for students identified as gifted or talented in grades three through twelve. The academic program is complemented by a wide variety of extracurricular activities, including intramural and interscholastic sports, instrumental and vocal music programs, and many student organizations, which are available to all students.

The community is further served by a parochial school system of four elementary (K-8) schools and one high school. The Bristol Technical Educational Center is open to adults and high school students in grades 11 and 12, and is approved by veterans. Opportunities for post-secondary education in technical, professional and the liberal arts field abound in the area through both public and private schools. A regional community/technical college is situated one mile over the Bristol border in the town of Farmington and Central Connecticut State University is in nearby New Britain. Branches of the University of Connecticut and State technical colleges are located in both Waterbury and Hartford, twenty minutes away. Also available in the area are nursery schools and day care facilities, as well as Latchkey programs in all of the elementary schools in Bristol.

Miscellaneous Information

Education:	Number
High schools	2
Middle schools (6 th , 7 th and 8 th)	3
Elementary schools	10
High school students	2,741
Middle school students	2,026
Elementary students	4,282
Special education students	51
Teachers	684
Administrative and non-teaching personnel	468
Student enrollment as of 10/1/06	8,992

**Program Summaries-
Board of Education Summary**

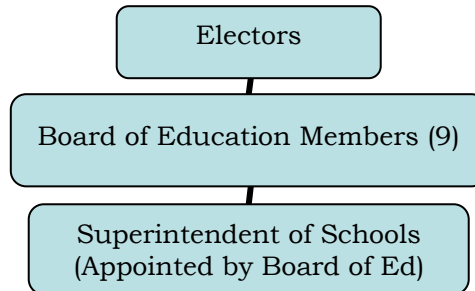
Board of Education Summary (continued)

BOARD OF EDUCATION FULL-TIME EMPLOYEES

<u>Department</u>	<u>2006-2007</u>	<u>2007-2008</u>	<u>2008-2009</u>
Board of Education	1,148	1,155.3	1,170

<u>Board of Education Bargaining Units</u>	<u>Employees Represented</u>
Bristol Federation of Teachers Local 1464	689
Bristol Association of Principals & Supervisors	39
Bristol Educational Secretaries Association	78
Bristol Municipal Employees Local 2267 Board of Education Custodial, Maintenance & Health Aides and Teacher Aides Local 2267 Council No. 4 (Board of Education Cafeteria)	297
Bristol Association of Crossing Guards Council 4	28 6
Non-Bargaining Employees	<u>33</u>
Total Board of Education Employees	1,170

Organizational Chart

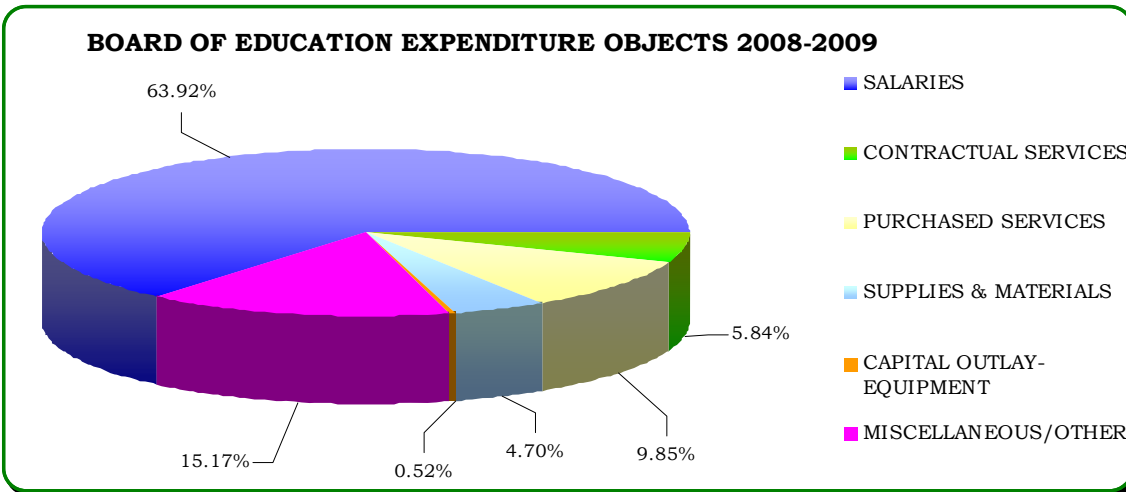


Renovations to Ivy Drive Elementary School

**Program Summaries-
Education Summary**

Board of Education Summary (continued)

EDUCATION EXPENDITURE OBJECTS	PRIOR YEAR ACTUAL 2006-2007	ORIGINAL BUDGET 2007-2008	REVISED BUDGET 2007-2008	BUDGET REQUEST 2008-2009	JOINT BOARD APPROVED 2008-2009
SALARIES	\$57,700,405	\$60,850,135	\$60,837,210	\$65,361,046	\$64,474,044
CONTRACTUAL SERVICES	5,188,703	5,424,529	5,535,109	6,041,830	5,890,012
PURCHASED SERVICES	9,221,806	8,566,016	9,476,069	10,063,725	9,931,875
SUPPLIES & MATERIALS	4,633,422	4,740,724	4,769,394	5,235,088	4,737,508
CAPITAL OUTLAY- EQUIPMENT	1,022,537	1,078,659	1,072,152	1,033,928	525,307
MISCELLANEOUS/OTHER	3,215,942	14,404,392	3,157,927	15,601,584	15,296,584
TOTALS	\$80,982,815	\$95,064,455	\$84,847,861	\$103,337,201	\$100,855,330



Performance Measures

Quantitative:

CAPT 2008 Score Summary Results for Bristol School District, Grade 10

The table includes the percent of students who scored at or above the Goal level (Levels 4 and 5) and the percent of students who scored at or above the Proficient level (Levels 3, 4, and 5) for 2007 and 2008. This report includes the results of all Grade 10 students tested in Bristol, including students who moved into the district after October 1, 2007.

	Percentage of Student at or Above Proficient		Percentage of Student at or Above Goal	
	2007	2008	2007	2008
Mathematics	88.3	88.5	51.5	61.9
Science	88.0	87.9	40.8	52.3
Reading Across the Disciplines	87.2	90.0	50.2	50.2
Writing Across the Disciplines	86.8	91.1	50.2	63.4

**Program Summaries-
Board of Education Summary**

Board of Education Summary (continued)

2008 Connecticut Mastery Test (CMT) Score Summary Results for Bristol School District, Grades 3 through 8.

The table shows grade level comparisons for the percent of students who scored at or above the Proficient level (Levels 3, 4 and 5) and the percent of students who scored at or above the Goal level (Levels 4 and 5) for the Connecticut Mastery Test (CMT). Percents compared are for different groups of students from 2007 and 2008. This report includes the results of all students tested in Bristol, including students who moved into the district after October 1, 2007.

	Mathematics				Reading				Writing			
	% At/Above Proficiency		% At/Above Goal		% At/Above Proficiency		% At/Above Goal		% At/Above Proficiency		% At/Above Goal	
	2008	2007	2008	2007	2008	2007	2008	2007	2008	2007	2008	2007
Grade 3	84.0*	78.4	70.2*	61.2	69.0*	66.3	52.4*	47.8	86.8*	80.1	69.4*	57.7
Grade 4	77.8	84.2	59.7	64.9	66.0	73.8	52.8	57.3	80.1	87.1	53.8	68.0
Grade 5	82.1	81.3	62.5	65.9	73.5	72.6	60.9	59.5	81.0	87.7	61.4	66.7
Grade 6	85.6*	83.3	66.3	62.8	78.0*	75.0	65.2	62.6	77.3	79.6	54.0	57.8
Grade 7	85*	82.0	60.4	59.7	79.9*	79.2	71.1	68.4	76.7	79.1	57.0	55.2
Grade 8	83.1*	80.9	63.1*	58.0	79.5*	78.5	67.7*	70.2	77.8	81.2	59.3	61.2

Bristol 2008 Exceeds Bristol 2007
* Bristol 2008 Exceeds State 2008



**Program Summaries-
Education Summary**

Board of Education Summary (continued)

Budget Highlights

**CITY OF BRISTOL, CONNECTICUT
2008-2009
GENERAL FUND EXPENDITURE SUMMARY FOR EDUCATION**

ORGCODE	DESCRIPTION	PRIOR YEAR ACTUAL 2006-2007	ORIGINAL BUDGET 2007-2008	REVISED BUDGET 2007-2008	BUDGET REQUEST 2008-2009	JOINT BOARD 2008-2009
1100	REGULAR INSTRUCTION	10,821,227	10,948,792	10,935,117	12,792,534	12,845,012
1102	ART	1,407,442	1,499,676	1,499,326	1,585,175	1,572,540
1103	BUSINESS EDUCATION	569,292	592,338	594,088	635,637	631,599
1105	ENGLISH (GRADES 9-12)	4,128,327	4,431,978	4,428,750	4,538,822	4,534,822
1106	WORLD LANGUAGES (GRADES 7-12)	1,235,617	1,313,239	1,321,940	1,363,166	1,346,666
1108	HEALTH/LIFE SKILLS (GRADES 6-12)	623,507	651,555	651,555	651,101	650,896
1109	FAMILY & CONSUMER SCIENCE (6-12)	561,252	590,229	589,758	613,279	610,149
1110	TECHNOLOGY (GRADES 6-12)	1,221,534	1,319,115	1,315,920	1,275,351	1,268,539
1111	MATHEMATICS (GRADES 1-12)	2,791,905	2,952,829	2,949,678	3,132,109	3,222,983
1112	MUSIC (GRADES 1-12)	1,464,941	1,588,200	1,587,870	1,641,804	1,600,210
1113	SCIENCE (GRADES 1-12)	2,808,527	2,925,938	2,925,224	2,922,573	2,913,717
1114	LANGUAGE ARTS/ READING (GRADES 1-8)	767,208	787,933	769,664	603,193	595,019
1115	SOCIAL STUDIES (GRADES 1-12)	2,751,617	2,880,535	2,871,154	2,925,691	2,915,494
1116	PHYSICAL EDUCATION (GRADES K-12)	1,710,210	1,787,632	1,787,675	1,808,729	1,801,737
1117	VOCATIONAL EDUCATION	13,620	0	15,000	0	0
1120	ALTERNATIVE EDUCATION (GRADES 7-11)	305,736	341,335	341,335	358,446	355,946
1121	KINDERGARTEN	1,102,227	1,321,271	1,321,304	1,283,924	1,222,433
1122	PRESCHOOL PROGRAM	279,128	308,842	348,842	385,619	385,104
1200	SPECIAL EDUCATION	7,376,732	8,196,454	8,196,454	8,898,274	8,542,839
1260	E.S.L	412,151	447,385	447,385	542,916	542,916
1270	GIFTED/ TALENTED	97,183	101,700	101,700	120,722	120,722
1300	ADULT CONTINUING EDUCATION	44,134	38,195	38,195	30,475	30,475
1310	ADULT BASIC EDUCATION	260,459	292,669	292,669	308,581	308,581
1400	SUMMER SCHOOL	66,071	61,297	61,297	76,804	64,884
2112	ATTENDANCE SERVICES	40,050	40,179	40,179	42,607	42,607
2113	SOCIAL WORK SERVICES	79,014	81,600	81,600	84,058	84,058
2120	GUIDANCE SERVICES	1,781,359	1,880,330	1,878,830	1,921,916	1,918,286
2122	IN-HOUSE SUSPENSION	9,275	30,000	30,000	205,000	80,000
2130	OTHER HEALTH SERVICES	6,000	6,000	6,000	6,000	6,000
2140	PSYCHOLOGICAL SERVICES	871,173	995,135	995,135	1,219,190	1,123,190
2150	SPEECH/ HEARING SERVICES	1,236,389	1,437,926	1,437,926	1,494,949	1,494,949
2190	TESTING	7,795	11,209	11,209	9,479	14,625
2210	INSTRUCTIONAL SERVICES/ STAFF DEV.	1,278,876	1,432,139	1,453,611	1,545,777	1,436,577
2221	EDUCATIONAL MEDIA SERVICES	602,693	611,493	611,493	650,986	650,986
2222	LIBRARY SERVICES	993,348	1,059,218	1,059,737	1,086,286	1,068,466
2223	AUDIO-VISUAL SERVICES	190,295	210,420	210,585	190,918	186,978
2225	COMPUTER INSTRUCTION SERVICES	1,438,660	1,474,475	1,640,261	1,493,994	1,490,995
2310	BOARD OF EDUCATION SERVICES	118,112	137,144	137,144	170,156	160,156
2317	STAFF RELATIONS/NEGOTIATIONS	921	21,000	21,000	21,000	21,000
2320	OFFICE OF THE SUPERINTENDENT	214,276	209,385	209,385	243,596	243,596
2321	ASSISTANT SUPERINTENDENT'S OFFICE	184,051	183,356	183,356	189,675	189,675
2329	PERSONNEL DEPARTMENT	351,528	346,156	346,156	383,332	372,517
2400	OFFICE OF PRINCIPAL SERVICES	4,556,965	4,892,688	4,875,801	5,529,462	4,933,860
2510	FISCAL SERVICES	4,130,428	15,320,569	4,013,014	16,566,411	16,246,411
2610	MAINTENANCE OF PLANT	2,534,764	2,635,428	2,635,428	2,844,213	2,289,213
2620	OPERATION OF BUILDING SERVICES	6,097,056	5,982,494	5,982,494	6,568,104	6,410,703
2700	STUDENT TRANSPORTATION (REIMB.)	4,486,842	4,065,670	440,670	4,734,264	4,849,380
2790	OTHER STUDENT TRANSPORTATION	145,192	147,900	147,580	150,000	150,000
2900	OTHER EDUCATIONAL COSTS	985,398	1,096,529	1,096,529	1,132,522	1,132,522
2902	PROGRAM/INSTRUCTIONAL IMPROVEMENTS	527,484	427,156	428,557	428,158	400,113
3200	ENTERPRISE OPERATIONS	259,945	356,728	356,290	398,274	393,925
3210	ATHLETICS	1,065,602	1,161,137	1,161,137	1,207,641	1,178,941
6110	TUITION TO CONNECTICUT SCHOOL DISTRICTS	1,122,857	1,164,919	1,164,919	1,429,551	1,368,551
6130	TUITION TO NON-PUBLIC SCHOOLS	2,846,423	2,266,935	2,799,935	2,894,767	2,833,767
TOTAL EDUCATION EXPENDITURES		\$80,982,815	\$95,064,455	\$80,847,861	\$103,337,211	\$100,855,330

**Program Summaries-
Board of Education Summary**

Board of Education Summary (continued)

<u>SCHOOL FACILITIES</u>	
School	Grades
Bristol Central High School	9 - 12
Bristol Eastern High School	9 - 12
Chippens Hill Middle School	6 - 8
Memorial Boulevard School	6 - 8
Northeast School	6 - 8
C.A. Bingham School	K - 5
Edgewood School	K - 5
Ellen Hubbel	K - 5
Greene- Hills	K - 5
Ivy Drive School	K - 5
Jennings School	K - 5
Mountain View School	K - 5
O'Connell School	K - 5
South Side School	K - 5
Stafford School	K - 5

Board of Education Members

Term Expiration Date

Barbara Y. Doyle, Chairman	11/2011
Julie M. Luczkow, Vice Chairman	11/2011
Karen Vibert, Secretary	11/2011
Jane E. Anastasio	11/2011
Margaret Bonola	11/2011
Sherry A. Turcotte	11/2011
Thomas P. O'Brien	11/2011
Amy Coan	11/2011
Christopher C. Wilson	11/2011

All Members are elected to a 4 year term.

Council Liaison (not a member) Council Member Minor

