

## **BOARD OF EDUCATION**

Philip A. Streifer, Ph.D., Superintendent of Schools  
129 Church Street  
Main Number: 860-584-7000



### **Mission Statement**

To maintain a safe and secure learning environment that provides all students with the necessary knowledge and skills to successfully complete college, other post high school education or training.

### **Service Narrative**

The Bristol Public School system provides educational services ranging from pre-school programs through adult education programs. Bristol is known as the most effective urban district in the State of Connecticut with student achievement scores that outperform our peers and in many cases are competitive with surrounding suburban districts. Bristol provides an excellent education within a diverse environment thereby preparing students for success in a challenging world. Bristol's reform and improvement model has been adopted by the Connecticut Department of Education for use in all urban districts in the State.

Within the system, there are nine elementary schools, which accommodate grades kindergarten through five; three middle schools, which provide programs for grades six, seven and eight; and two high schools, which are comprehensive high schools for grades nine through twelve.

Two new K-8 schools will open for the 2012-2013 school year, one on each side of the city. The West Side K-8 and Forestville K-8 schools will be state of the art facilities incorporating the latest technologies. The O'Connell, Greene-Hills and Memorial Boulevard schools will close with the opening of these new K-8 facilities.

The Bristol Schools are in partnerships with the University of Connecticut, the University of Hartford and the North West Evaluation Association to help redesign professional learning and accountability systems. This work is leading to a reframing of how the faculty and administration address learning problems.

In addition to its regular public schools, alternative education programs are also provided. Bristol maintains an extensive special education program with a variety of services provided for handicapped and learning disabled students from pre-school to age twenty-one. Bristol's program for gifted and talented children includes special programs and resource services for students identified as gifted or talented in grades three through twelve. The academic program is complemented by a wide variety of extracurricular activities, including intramural and interscholastic sports, instrumental and vocal music programs, and many student organizations, which are available to all students.

**Board of Education Summary (continued)**

The community is further served by a parochial school system of four elementary (K-8) schools and one high school. The Bristol Technical Educational Center is open to adults and high school students in grades 11 and 12, and is approved for veterans. Opportunities for post-secondary education in technical, professional and the liberal arts fields abound in the area through both public and private schools. A regional community/technical college is situated one mile over the Bristol border in the town of Farmington and Central Connecticut State University is in nearby New Britain. Branches of the University of Connecticut and State technical colleges are located in both Waterbury and West Hartford, twenty minutes away. Also available in the area are nursery schools and day care facilities, as well as Latchkey programs in all of the elementary schools in Bristol.

**Highlights:**

- ❖ Bristol Eastern HS - CT Vanguard School
- ❖ Bristol Central HS – CT Vanguard School
- ❖ Chippens Hill Middle School – CAS Middle School of the Year
- ❖ Ivy Drive Elementary School – CAS Elementary School of the Year
- ❖ Dr. Rosie Vojtek – Administrator of the Year (CT Federation of School Administrators)
- ❖ Greene-Hills Elementary Schools – CAS Exemplary School Climate Award

**Fiscal Year 2011 Major Service Level Accomplishments**

- Student achievement continues to rise, as noted on all indicators
- Redesigned how professionals learn in the district continuing our focus on instructional effectiveness
- Major revisions and updates to all curricula have been achieved
- New K-8 schools are under construction and slated to open for the 2012-2013 school-year

**Fiscal Year 2012 Major Service Level Goals**

- Expand implementation of redesigned professional learning program to the high schools
- Continue our focus on instructional effectiveness
- Complete a redistricting plan to open the new K-8 schools
- Complete construction and all staffing requirements/transfers to open the new K-8 schools

**Long Term Goals**

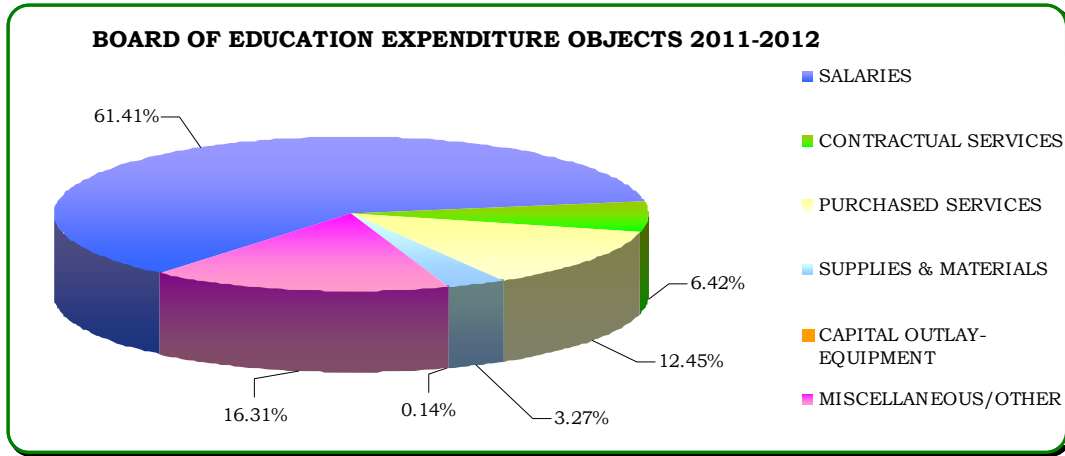
The long term goals of the Bristol School District includes accomplishing the Board of Education’s mission statement, which calls for all students to be prepared for college or post secondary education. To do this we must focus on helping all students to achieve at high levels in rigorous coursework. That requires continued course redesign which is well underway and it also requires an organizational focus on the ‘instructional core’ – what teachers do in the classroom with students around challenging content.

**Program Summaries-  
Board of Education**

**Board of Education Summary (continued)**

**Budget Summary**

EDUCATION EXPENDITURE OBJECTS	PRIOR YEAR ACTUAL 2009-2010	ORIGINAL BUDGET 2010-2011	REVISED BUDGET 2010-2011	BUDGET REQUEST 2011-2012	JOINT BOARD APPROVED 2011-2012
SALARIES	\$62,713,420	\$64,019,000	\$63,910,089	\$65,802,661	\$61,486,435
CONTRACTUAL SERVICES	6,438,337	6,523,443	6,549,645	6,419,038	6,425,258
PURCHASED SERVICES	10,305,762	11,762,264	11,735,058	13,215,865	12,463,098
SUPPLIES & MATERIALS	4,167,550	3,266,470	3,623,172	3,896,627	3,278,805
CAPITAL OUTLAY- EQUIPMENT	906,660	121,987	431,366	493,733	138,863
MISCELLANEOUS/OTHER	2,876,183	16,870,166	2,932,996	17,737,654	16,334,141
<b>TOTALS</b>	<b>\$87,407,911</b>	<b>\$102,563,330</b>	<b>\$89,182,326</b>	<b>\$107,565,578</b>	<b>\$100,126,600</b>



**Expenditure and Position Summary**

	<u>2009-2010</u>	<u>2010-2011</u>	<u>2011-2012</u>
Salary Expenditures*	\$62,713,420	\$63,046,116	\$61,486,433
Full time Positions	1,164	1,136	1,084

\*The salary expenditures represent funding from the General Fund only, excluding grant salary expenditures.

Personnel	Fiscal Year 2011	Fiscal Year 2012
Teachers	668	653
Administrative & non teaching	468	431
<b>Total</b>	<b>1,136</b>	<b>1,084</b>
Bristol Federation of Teachers- Local 1464	668	653
Bristol Association of Principals & Supervisors	35	33
Bristol Municipal Employees Local 2267 Custodial, Maintenance, Health Aides & Teachers Aides & Local 2267 Council No. 4 (Cafeteria)	291	286
Bristol Association of Crossing Guards	25	0
Council 4 AFSCME 818 Supervisors	7	7
Non-Bargaining Employees	35	32
Secretaries	75	73
<b>Total</b>	<b>1,136</b>	<b>1,084</b>

**Board of Education Summary (continued)**

**Performance Measures**

*Following are a series of charts from the district's 2010-2011 Student Achievement Report which contains the most recent data available.*

---

## Achievement 2010-2011



- **Mastery Test 3-8**
  - **80-92%** Proficiency
  - **54-80%** Goal
- **Mastery Test 10**
  - **90%** Proficiency
  - **55%** Goal
- **SAT**
  - **Read** 511 +13
  - **Math** 512 +9
  - **Write** 516 +14

---

## Narrowing the Achievement Gap

Proficiency Rates: CMT/CAPT

4<sup>th</sup> grade reading scores  
increased 16% overall

- Black +31%
- Special education +40%
- Free/Reduced lunch +26%

Sixth grade math scores  
improved 12% overall

- Hispanic +35%
- Black +26%
- Special Education +41%
- Free/Reduced lunch +22%

In high school:

- Hispanics gained +23% in math and +35% in reading
- Free/Reduced meal plans gained +29% in math and +23% in reading.
- **Four-Year Drop-Out rate fell from 12.2% in 2000 to 3.4% in 2008, a rate lower than the state average of 6.6%.**

**Board of Education Summary (continued)**

**CAPT 2010 Bristol vs. State**

	Reading				Writing			
	% Proficient		% Goal Range		% Proficient		% Goal Range	
	Bristol	State	Bristol	State	Bristol	State	Bristol	State
Total Grp	<b>89</b>	83	<b>48</b>	46	<b>87</b>	86	<b>58</b>	60
Male	<b>87</b>	79	<b>41</b>	40	83	82	<b>48</b>	51
Female	<b>92</b>	87	<b>56</b>	52	<b>92</b>	91	<b>68</b>	68
African American	<b>76</b>	63	<b>35</b>	16	81	72	<b>45</b>	32
Hispanic	<b>78</b>	65	<b>24</b>	18	73	70	<b>34</b>	33
White	<b>93</b>	91	<b>53</b>	57	<b>91</b>	92	<b>63</b>	70
Econ Disadv	<b>81</b>	63	<b>31</b>	18	<b>77</b>	70	<b>40</b>	32
Full Price	<b>94</b>	91	<b>57</b>	57	<b>93</b>	93	<b>67</b>	70
Special Ed.	<b>56</b>	52	<b>5</b>	14	<b>38</b>	50	<b>1</b>	17
Not Special Ed.	<b>93</b>	86	<b>53</b>	49	<b>94</b>	90	<b>65</b>	64
Not ELL	<b>89</b>	83	<b>48</b>	46	<b>87</b>	86	<b>58</b>	60

**Blue/Green** = Exceeds State 2010 Average      **BOLD** Met or Exceeded Bristol 2009 Average  
**Light Blue/Light Green** = 3 or fewer percentage points below State 2010 average

**CAPT 2010 Bristol vs. State**

	Mathematics				Science			
	% Proficient		% Goal Range		% Proficient		% Goal Range	
	Bristol	State	Bristol	State	Bristol	State	Bristol	State
Total Grp	89	79	<b>56</b>	49	<b>89</b>	82	<b>50</b>	46
Male	<b>91</b>	80	<b>58</b>	52	<b>89</b>	81	<b>54</b>	48
Female	87	78	<b>54</b>	46	<b>89</b>	82	<b>45</b>	43
African American	<b>84</b>	49	<b>28</b>	14	<b>86</b>	55	<b>35</b>	14
Hispanic	72	56	<b>28</b>	19	71	58	<b>22</b>	16
White	<b>93</b>	89	<b>64</b>	62	<b>93</b>	92	<b>56</b>	58
Econ Disadv	79	54	<b>39</b>	19	<b>78</b>	57	<b>32</b>	16
Full Price	<b>94</b>	88	<b>65</b>	60	<b>95</b>	91	<b>59</b>	57
Special Ed.	49	47	<b>14</b>	17	37	47	<b>12</b>	13
Not Special Ed.	93	82	<b>60</b>	52	<b>96</b>	85	<b>55</b>	49

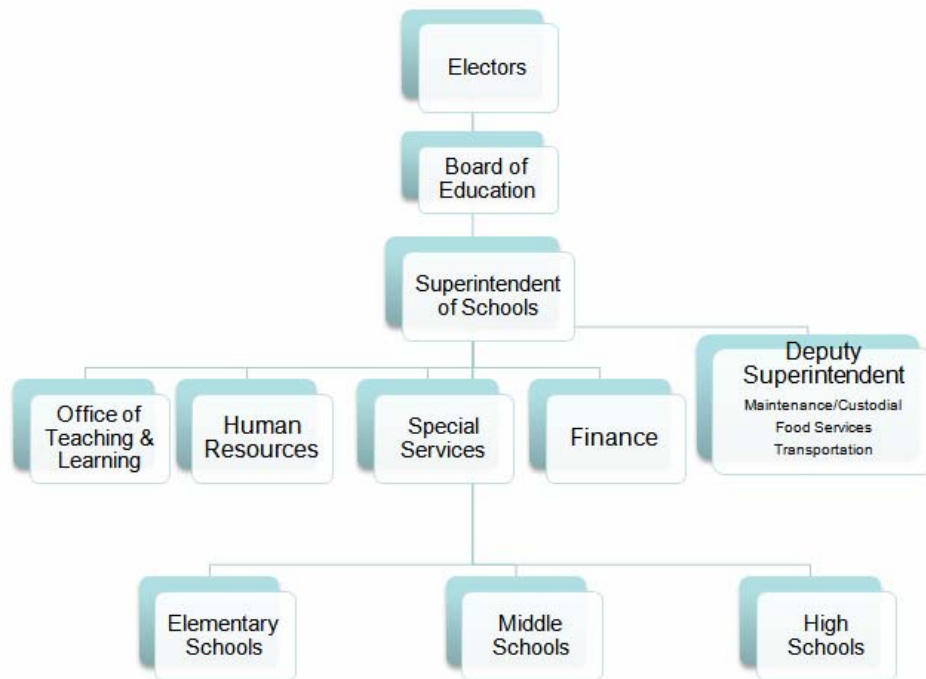
**Blue/Green** = Exceeds State 2010 Average      **BOLD** Met or Exceeded Bristol 2009 Average  
**Light Green** = 3 or fewer percentage points below State 2010 average

**Board of Education Summary (continued)**

**Organizational Chart:**

Board of Education Members (9); Superintendent of Schools (Appointed by Board of Ed)

# Bristol Public Schools



**O'Connell School**

**Program Summaries-  
Board of Education**

**Board of Education Summary (continued)**

**Budget Highlights**

**CITY OF BRISTOL, CONNECTICUT  
2011-2012  
GENERAL FUND EXPENDITURE SUMMARY FOR EDUCATION**

ORG CODE	DESCRIPTION	PRIOR YEAR			BUDGET REQUEST 2011-2012	JOINT BOARD 2011-2012
		ACTUAL 2009-2010	ORIGINAL BUDGET 2010-2011	REVISED BUDGET 2010-2011		
1100	REGULAR INSTRUCTION	10,562,059	11,718,621	11,589,316	12,715,581	10,253,403
1102	ART	1,411,771	1,528,576	1,532,272	1,687,181	1,570,715
1103	BUSINESS EDUCATION	612,088	589,601	489,683	421,601	296,827
1105	ENGLISH (GRADES 9-12)	3,797,835	4,663,387	4,666,854	4,967,724	4,954,923
1106	WORLD LANGUAGES (GRADES 7-12)	1,186,383	1,369,147	1,370,237	1,365,574	1,352,833
1108	HEALTH/LIFE SKILLS (GRADES 6-12)	606,763	621,717	620,458	574,263	573,605
1109	FAMILY & CONSUMER SCIENCE (6-12)	497,353	514,608	516,732	482,978	345,985
1110	TECHNOLOGY (GRADES 6-12)	1,185,072	1,106,459	1,111,726	1,153,515	1,012,174
1111	MATHEMATICS (GRADES 1-12)	2,693,624	3,464,166	3,469,549	3,478,003	3,458,195
1112	MUSIC (GRADES 1-12)	1,126,389	1,470,335	1,484,784	1,520,684	1,497,996
1113	SCIENCE (GRADES 1-12)	2,304,947	2,900,795	2,908,266	3,043,409	3,022,250
1114	LANGUAGE ARTS/ READING (GRADES 1-8)	991,221	1,050,966	1,055,032	457,362	425,656
1115	SOCIAL STUDIES (GRADES 1-12)	2,488,877	2,982,273	2,984,229	3,158,746	3,138,751
1116	PHYSICAL EDUCATION (GRADES K-12)	1,471,914	1,739,151	1,740,364	1,811,089	1,800,623
1117	VOCATIONAL EDUCATION	15,632	0	10,000	0	0
1120	ALTERNATIVE EDUCATION (GRADES 7-11)	217,401	350,281	351,362	369,964	237,020
1121	KINDERGARTEN	1,221,402	1,542,668	1,543,180	1,434,131	1,232,661
1122	PRESCHOOL PROGRAM	148,688	237,060	237,790	319,475	319,475
1200	SPECIAL EDUCATION	8,058,613	8,658,605	8,666,672	9,183,646	9,141,646
1260	E.S.L	375,977	540,370	541,570	567,742	567,742
1270	GIFTED/ TALENTED	120,710	127,414	128,539	130,722	130,722
1300	ADULT CONTINUING EDUCATION	29,125	20,568	20,568	20,592	0
1310	ADULT BASIC EDUCATION	276,867	296,317	298,998	286,048	283,504
1400	SUMMER SCHOOL	55,699	66,518	66,518	73,323	73,323
2112	ATTENDANCE SERVICES	43,204	44,228	44,273	45,072	45,072
2113	SOCIAL WORK SERVICES	86,090	87,298	87,298	0	0
2120	GUIDANCE SERVICES	1,458,608	1,669,035	1,660,786	1,735,263	1,635,854
2122	IN-HOUSE SUSPENSION	101,411	157,988	161,988	160,000	120,000
2130	OTHER HEALTH SERVICES	6,000	6,500	6,500	6,250	6,250
2140	PSYCHOLOGICAL SERVICES	637,999	1,136,002	1,136,752	1,262,383	1,262,383
2150	SPEECH/ HEARING SERVICES	1,389,267	1,547,170	1,552,135	1,635,564	1,610,127
2190	TESTING	30,917	13,373	34,026	43,551	43,551
2210	INSTRUCTIONAL SERVICES/ STAFF DEV.	1,269,056	1,247,250	1,318,523	1,282,038	1,064,183
2221	EDUCATIONAL MEDIA SERVICES	605,369	641,500	612,605	635,000	595,000
2222	LIBRARY SERVICES	910,179	981,418	1,013,353	1,009,891	943,398
2223	AUDIO-VISUAL SERVICES	163,582	168,121	180,147	192,361	171,072
2225	COMPUTER INSTRUCTION SERVICES	1,583,352	1,313,867	1,641,427	1,410,494	1,331,877
2310	BOARD OF EDUCATION SERVICES	233,720	192,822	196,685	195,588	195,588
2317	STAFF RELATIONS/NEGOTIATIONS	4,975	30,850	31,000	21,000	21,000
2320	OFFICE OF THE SUPERINTENDENT	315,371	228,075	228,375	230,000	230,000
2321	ASSISTANT SUPERINTENDENT'S OFFICE	228,229	202,522	202,897	208,994	208,994
2329	PERSONNEL DEPARTMENT	393,487	439,020	439,733	449,360	440,877
2400	OFFICE OF PRINCIPAL SERVICES	5,062,132	4,926,660	4,950,995	4,953,487	4,712,820
2510	FISCAL SERVICES	3,741,787	17,812,700	3,692,032	18,667,508	17,220,126
2610	MAINTENANCE OF PLANT	3,093,728	2,348,882	2,551,431	2,574,473	2,396,358
2620	OPERATION OF BUILDING SERVICES	6,308,473	6,054,575	6,162,526	6,301,400	6,075,893
2700	STUDENT TRANSPORTATION (REIMB.)	4,832,625	5,523,880	5,526,275	5,658,626	5,229,159
2790	OTHER STUDENT TRANSPORTATION	131,741	155,000	155,380	155,000	128,600
2900	OTHER EDUCATIONAL COSTS	1,028,086	1,045,877	1,045,877	1,004,413	885,094
2902	PROGRAM/INSTRUCTIONAL IMPROVEMENTS	369,623	257,320	222,357	413,414	143,229
3100	BRISTOL SCHOOL LUNCH PROGRAM	50,000	0	160,000	0	0
3200	ENTERPRISE OPERATIONS	406,131	469,875	472,596	508,604	476,735
3210	ATHLETICS	1,109,028	1,115,906	1,125,642	1,157,747	943,585
5000	ARRA FUNDING BOE	2,112,169	0	0	0	0
5050	ARRA FUNDING	3,830,871	0	0	0	0
6110	TUITION TO CONNECTICUT SCHOOL DISTRICTS	1,346,720	1,588,190	1,588,190	1,439,200	1,439,200
6130	TUITION TO NON-PUBLIC SCHOOLS	3,067,572	3,597,823	3,597,823	4,985,544	4,860,544
<b>TOTAL EDUCATION EXPENDITURES</b>		<b>\$87,407,911</b>	<b>\$102,563,330</b>	<b>\$89,204,326</b>	<b>\$107,565,578</b>	<b>\$100,126,600</b>

**Program Summaries-  
Board of Education**

---

**Board of Education Summary (continued)**

**School Information:**

High Schools (Grades 9-12):	
Bristol Central High School	
Bristol Eastern High School	
Total High School Students	2,689
Middles Schools (Grades 6-8)	
Chippens Hill Middles School	
Memorial Boulevard School	
Northeast Middle School	
Total Middle School Students	1,960
Elementary Schools (Grades K-5)	
Edgewood School	
Ellen P. Hubbell School	
Greene Hills School	
Ivy Drive School	
John J. Jennings School	
Mountain View School	
Clara T. O'Connell School	
South Side School	
Stafford School	
Total Elementary School Students	3,935
Total Student Enrollment 10/1/2010:	8,584



*From right to left: Chairperson of the Board of Education Barbara Doyle, Chairman of the Board of Finance Richard Miecznikowski, Mayor Art Ward, Superintendent Dr. Philip Streifer, Deputy Superintendent Dr. Susan Moreau and Building Committee Chairperson Michael Audette, help break ground for the new West Bristol K-8 School.*

**Program Summaries-  
Board of Education**

**Board of Education Summary (continued)**

**New School Construction:**



Forestville K-8 School



West Bristol K-8 School

Due to the timing of the project to construct the Forestville and West Bristol K-8 Schools it soon became apparent that the City of Bristol was going to be able to complete this initiative, as designed, \$18 million under budget. That figure is likely to increase due to the \$2.5 million that was deposited in the mandated contingency fund.

At the West Bristol School site, Richards Corporation began the site work during the winter, with the footings and foundation for area A, the elementary wing, poured.

At the Forestville site, the former Starlight Market was torn down and developed into a parking lot. O&G broke ground on the school building in April. The construction of both schools is right on or ahead of schedule for the targeted August 2012 opening date.

<b>New K-8 Schools</b>			
	<b>Approved Budget</b>	<b>Final Bid Costs</b>	<b>Estimated Cost Avoidance</b>
<b>Forestville</b>	\$53,000,000	\$43,888,271	(\$9,111,728)
<b>West Bristol</b>	\$52,000,000	\$42,871,720	(\$9,128,279)

**BOARD OF EDUCATION MEMBERS**

Barbara Y. Doyle, Chairman  
 Julie M. Luczkow, Vice-Chairman  
 Karen L. Vibert  
 Margaret L. Bonola  
 Orlando Calfe, Jr.  
 Amy D. Coan  
 Thomas P. O'Brien  
 Sherry A. Turcotte  
 Christopher C. Wilson

**EXPIRATION OF TERM**

11/2011  
 11/2011  
 11/2011  
 11/2011  
 11/2011  
 11/2011  
 11/2011  
 11/2011  
 11/2011

