

## **BOARD OF EDUCATION**

Philip Streifer, Ph.D. Superintendent of Schools  
129 Church Street  
Main Number: (860) 584-7000



### **Mission Statement**

To maintain a safe and secure learning environment that provides all students with the necessary knowledge and skills to successfully complete college, other post high school education or training.

### **Service Narrative**

The Bristol Public School system provides educational services ranging from pre-school programs through adult education programs. Within the system, there are nine elementary schools, which accommodate grades kindergarten through five; three middle schools, which provide programs for grades six, seven and eight; and two high schools, which are comprehensive high schools for grades nine through twelve.

In addition to these schools, alternative education programs are provided at the Bristol Community Senior Center. Bristol maintains an extensive special education program with a variety of services provided for handicapped and learning disabled students from pre-school to age twenty-one. Bristol's program for gifted and talented children includes special programs and resource services for students identified as gifted or talented in grades three through twelve. The academic program is complemented by a wide variety of extracurricular activities, including intramural and interscholastic sports, instrumental and vocal music programs, and many student organizations, which are available to all students.

The community is further served by a parochial school system of four elementary (K-8) schools and one high school. The Bristol Technical Educational Center is open to adults and high school students in grades 11 and 12, and is approved for veterans. Opportunities for post-secondary education in technical, professional and the liberal arts fields abound in the area through both public and private schools. A regional community/technical college is situated one mile over the Bristol border in the town of Farmington and Central Connecticut State University is in nearby New Britain. Branches of the University of Connecticut and State technical colleges are located in both Waterbury and Hartford, twenty minutes away. Also available in the area are nursery schools and day care facilities, as well as Latchkey programs in all of the elementary schools in Bristol.

**Board of Education Summary (continued)**

**Fiscal Year 2010 Major Service Level Accomplishments**

- All quality indicators are up, from the Connecticut Mastery Test to the Connecticut Academic Performance Test, to the SAT and college acceptances. While not every school and grade level has made the same level of progress, overall achievement is either up city-wide or stable at already relatively high levels. Special 'achievement growth analyses' that track performance of students from year to year all show expected gains over time or greater than expected gains. These results demonstrate the success of Bristol's improvement plan and its long-term sustainability.
- Progress has been made with the planned new schools; all approvals have been completed and design specifications are proceeding. These schools will provide a catalyst for continued improvement in the district and will replace aging facilities. The new schools will open August 2012 under current plans.

**Long Term Goals**

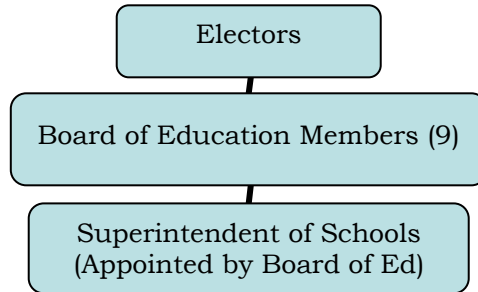
- 90% of students will successfully complete at least one course that carries college credit before graduating.
- 100% of students will be accepted into post-secondary education programs.
- Improve the performance of all students while closing the gap between students eligible for free or reduced lunch and those not eligible by 5%.
- 90% of students will have an attendance rate of 95% or better.
- 50% of students in Grade 6 will meet or exceed the Health standard on all four of the subtests of the CT Physical Fitness Assessment.
- 50% of students in Grade 8 will meet or exceed the Health standard on all four of the subtests of the CT Physical Fitness Assessment.
- Qualitatively:
  - The primary goal is to improve upon the district's accountability and improvement plan to ensure continued success.
  - Continue path focused on high achievement for *all* students.
  - Invest in continued professional development.
  - Maximize opportunities for all students to attend a rigorous four-year college program.
  - Hire the best, brightest and most diverse staff possible.
  - Communicate successes and needs with all City Boards and Community At-Large.

**Program Summaries-  
Education Summary**

---

**Board of Education Summary (continued)**

**Organizational Chart**



**Miscellaneous Information**

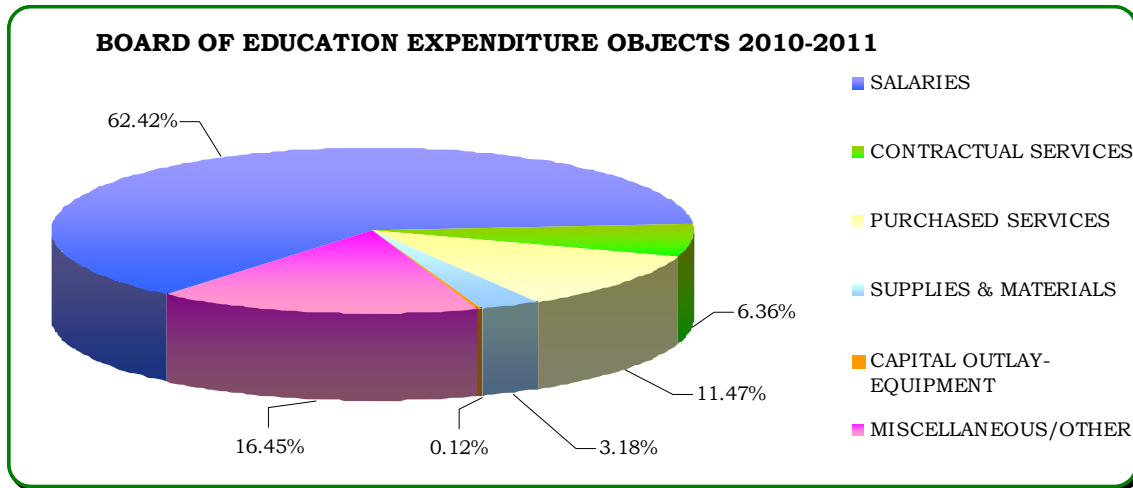
| <b>Education:</b>   | <b>Number</b> |
|---|---------------|
| High schools  | 2             |
| Middle schools (6 <sup>th</sup> , 7 <sup>th</sup> and 8 <sup>th</sup> ) | 3             |
| Elementary schools  | 9             |
| High school students  | 2,641         |
| Middle school students  | 2,039         |
| Elementary students   | 3,954         |
| Special education students  | 1,142         |
| Teachers  | 669           |
| Administrative and non-teaching personnel                               | 476           |
| Student enrollment as of 10/1/09  | 8,733         |

**Program Summaries-  
Board of Education Summary**

**Board of Education Summary (continued)**

**Budget Summary**

| EDUCATION EXPENDITURE OBJECTS    | PRIOR YEAR<br>ACTUAL<br>2008-2009 | ORIGINAL<br>BUDGET<br>2009-2010 | REVISED<br>BUDGET<br>2009-2010 | BUDGET<br>REQUEST<br>2010-2011 | JOINT BOARD<br>APPROVED<br>2010-2011 |
|----------------------------------|-----------------------------------|---------------------------------|--------------------------------|--------------------------------|--------------------------------------|
| <b>SALARIES</b>                  | \$63,132,994                      | \$64,268,978                    | \$64,262,228                   | \$64,059,000                   | \$64,019,000                         |
| <b>CONTRACTUAL SERVICES</b>      | 5,636,127                         | 5,647,757                       | 6,299,838                      | 6,800,934                      | 6,523,443                            |
| <b>PURCHASED SERVICES</b>        | 10,775,304                        | 11,498,382                      | 11,392,031                     | 11,862,264                     | 11,762,264                           |
| <b>SUPPLIES &amp; MATERIALS</b>  | 4,601,792                         | 3,235,030                       | 3,858,046                      | 3,868,328                      | 3,266,470                            |
| <b>CAPITAL OUTLAY- EQUIPMENT</b> | 736,763                           | 280,815                         | 530,064                        | 543,922                        | 121,987                              |
| <b>MISCELLANEOUS/OTHER</b>       | 3,452,306                         | 17,332,368                      | 3,192,676                      | 16,906,674                     | 16,870,166                           |
| <b>TOTALS</b>                    | <b>\$88,335,286</b>               | <b>\$102,263,330</b>            | <b>\$89,534,883</b>            | <b>\$104,041,122</b>           | <b>\$102,563,330</b>                 |



**BOARD OF EDUCATION FULL-TIME EMPLOYEES**

| <u>Department</u>  | <u>2008-2009</u> | <u>2009-2010</u> | <u>2010-2011</u> |
|--------------------|------------------|------------------|------------------|
| Board of Education | 1,170            | 1,164            | 1,145            |

|   | <b>Employees</b> |
|---|------------------|
| Bristol Federation of Teachers Local 1464   | 669              |
| Bristol Association of Principals & Supervisors   | 35               |
| Bristol Educational Secretaries Association   | 76               |
| Bristol Municipal Employees Local 2267 Board of Education<br><i>Custodial, Maintenance &amp; Health Aides and Teacher Aides</i><br><i>Local 2267 Council No. 4 (Board of Education Cafeteria)</i> | 294              |
| Bristol Association of Crossing Guards  | 26               |
| Council 4 AFSCME 818 Supervisors  | 7                |
| Non-Bargaining Employees  | 38               |
| <b>Total Board of Education Employees</b>   | <b>1,145</b>     |

**Program Summaries-  
Education Summary**

**Board of Education Summary (continued)**

**Performance Measures**

**Quantitative:**

**CAPT 2009 Score Summary Results for Bristol School District, Grade 10**

The table below includes the percent of students who scored at or above the Goal level (Levels 4 and 5) and the percent of students who scored at or above the Proficient level (Levels 3, 4, and 5) for 2008 and 2009. This report includes the results of all Grade 10 students tested in Bristol, including students who moved into the district after October 1, 2008.

|                                | Percentage of Students at or Above Proficient |      | Percentage of Students at or Above Goal |      |
|--------------------------------|---|------|---|------|
|                                | 2008  | 2009 | 2008                                    | 2009 |
| Mathematics                    | 88  | 90   | 62                                      | 57   |
| Science                        | 89  | 88   | 52                                      | 51   |
| Reading Across the Disciplines | 90  | 89   | 50                                      | 53   |
| Writing Across the Disciplines | 91  | 87   | 63                                      | 53   |

**2009 Connecticut Mastery Test (CMT) Score Summary Results for Bristol School District, Grades 3 through 8.**

The table below shows grade level comparisons for the percent of students who scored at or above the Proficient level (Levels 3, 4 and 5) and the percent of students who scored at or above the Goal level (Levels 4 and 5) for the Connecticut Mastery Test (CMT). Percents compared are for different groups of students from 2008 and 2009. This report includes the results of all students tested in Bristol, including students who moved into the district after October 1, 2008. Cells shaded 'green' are where 2009 Bristol results improved over the prior year.

| Grade | Mathematics            |      |                 |      | Reading                |      |                 |      | Writing                |      |                 |      |
|-------|------------------------|------|-----------------|------|------------------------|------|-----------------|------|------------------------|------|-----------------|------|
|       | % At/Above Proficiency |      | % At/Above Goal |      | % At/Above Proficiency |      | % At/Above Goal |      | % At/Above Proficiency |      | % At/Above Goal |      |
|       | 2009                   | 2008 | 2009            | 2008 | 2009                   | 2008 | 2009            | 2008 | 2009                   | 2008 | 2009            | 2008 |
| 3     | 81                     | 84   | 65              | 70   | 72                     | 69   | 55              | 52   | 83                     | 87   | 62              | 69   |
| 4     | 89                     | 78   | 72              | 60   | 81                     | 66   | 67              | 53   | 87                     | 80   | 64              | 54   |
| 5     | 83                     | 82   | 65              | 63   | 79                     | 74   | 66              | 61   | 82                     | 86   | 60              | 61   |
| 6     | 89                     | 86   | 66              | 66   | 80                     | 78   | 67              | 65   | 81                     | 77   | 54              | 54   |
| 7     | 91                     | 85   | 72              | 60   | 90                     | 80   | 80              | 71   | 80                     | 77   | 60              | 57   |
| 8     | 90                     | 83   | 62              | 63   | 85                     | 80   | 75              | 68   | 81                     | 81   | 61              | 59   |

**Program Summaries-  
Board of Education Summary**

**Board of Education Summary (continued)**

**Budget Highlights**

**CITY OF BRISTOL, CONNECTICUT  
2010-2011  
GENERAL FUND EXPENDITURE SUMMARY FOR EDUCATION**

| ORG<br>CODE                         | DESCRIPTION                             | PRIOR YEAR          | ORIGINAL BUDGET<br>2009-2010 | REVISED BUDGET<br>2009-2010 | BUDGET REQUEST<br>2010-2011 | JOINT<br>BOARD<br>2010-2011 |
|-------------------------------------|---|---------------------|------------------------------|-----------------------------|-----------------------------|-----------------------------|
|                                     |   | ACTUAL<br>2008-2009 |                              |                             |                             |                             |
| 1100                                | REGULAR INSTRUCTION                     | 12,012,701          | 12,044,687                   | 12,075,935                  | 11,789,896                  | 11,718,621                  |
| 1102                                | ART                                     | 1,501,691           | 1,599,457                    | 1,613,258                   | 1,559,047                   | 1,528,576                   |
| 1103                                | BUSINESS EDUCATION                      | 628,588             | 640,484                      | 640,484                     | 591,668                     | 589,601                     |
| 1105                                | ENGLISH (GRADES 9-12)                   | 4,388,762           | 4,633,703                    | 4,639,262                   | 4,667,220                   | 4,663,387                   |
| 1106                                | WORLD LANGUAGES (GRADES 7-12)           | 1,368,630           | 1,342,300                    | 1,341,878                   | 1,372,842                   | 1,369,147                   |
| 1108                                | HEALTH/LIFE SKILLS (GRADES 6-12)        | 691,605             | 694,718                      | 695,076                     | 621,823                     | 621,717                     |
| 1109                                | FAMILY & CONSUMER SCIENCE (6-12)        | 606,444             | 615,099                      | 615,099                     | 516,729                     | 514,608                     |
| 1110                                | TECHNOLOGY (GRADES 6-12)                | 1,239,834           | 1,270,828                    | 1,270,908                   | 1,111,781                   | 1,106,459                   |
| 1111                                | MATHEMATICS (GRADES 1-12)               | 3,103,997           | 3,199,144                    | 3,200,964                   | 3,471,407                   | 3,464,166                   |
| 1112                                | MUSIC (GRADES 1-12)                     | 1,534,697           | 1,523,118                    | 1,530,832                   | 1,479,806                   | 1,470,335                   |
| 1113                                | SCIENCE (GRADES 1-12)                   | 2,852,224           | 2,906,803                    | 2,907,961                   | 2,907,341                   | 2,900,795                   |
| 1114                                | LANGUAGE ARTS/ READING (GRADES 1-8)     | 886,058             | 913,243                      | 919,664                     | 1,063,785                   | 1,050,966                   |
| 1115                                | SOCIAL STUDIES (GRADES 1-12)            | 2,858,836           | 2,900,235                    | 2,901,329                   | 2,988,146                   | 2,982,273                   |
| 1116                                | PHYSICAL EDUCATION (GRADES K-12)        | 1,645,857           | 1,688,145                    | 1,688,191                   | 1,754,522                   | 1,739,151                   |
| 1117                                | VOCATIONAL EDUCATION                    | 14,767              | 0                            | 10,000                      | 0                           | 0                           |
| 1120                                | ALTERNATIVE EDUCATION (GRADES 7-11)     | 300,889             | 312,068                      | 314,726                     | 351,360                     | 350,281                     |
| 1121                                | KINDERGARTEN                            | 1,398,089           | 1,465,442                    | 1,466,496                   | 1,543,815                   | 1,542,668                   |
| 1122                                | PRESCHOOL PROGRAM                       | 401,319             | 195,398                      | 196,065                     | 238,170                     | 237,060                     |
| 1200                                | SPECIAL EDUCATION                       | 8,505,164           | 8,535,021                    | 8,637,126                   | 8,679,403                   | 8,658,605                   |
| 1260                                | E.S.L                                   | 538,985             | 557,119                      | 558,519                     | 541,570                     | 540,370                     |
| 1270                                | GIFTED/ TALENTED                        | 112,882             | 112,427                      | 119,873                     | 128,539                     | 127,414                     |
| 1300                                | ADULT CONTINUING EDUCATION              | 36,749              | 20,566                       | 20,566                      | 20,568                      | 20,568                      |
| 1310                                | ADULT BASIC EDUCATION                   | 281,233             | 290,175                      | 293,133                     | 298,994                     | 296,317                     |
| 1400                                | SUMMER SCHOOL                           | 49,957              | 61,371                       | 59,857                      | 66,518                      | 66,518                      |
| 2112                                | ATTENDANCE SERVICES                     | 42,393              | 42,547                       | 42,547                      | 44,273                      | 44,228                      |
| 2113                                | SOCIAL WORK SERVICES                    | 83,858              | 85,169                       | 85,169                      | 87,298                      | 87,298                      |
| 2120                                | GUIDANCE SERVICES                       | 1,672,926           | 1,724,079                    | 1,723,079                   | 1,669,870                   | 1,669,035                   |
| 2122                                | IN-HOUSE SUSPENSION                     | 65,072              | 80,000                       | 80,000                      | 197,988                     | 157,988                     |
| 2130                                | OTHER HEALTH SERVICES                   | 6,231               | 4,800                        | 6,000                       | 6,500                       | 6,500                       |
| 2140                                | PSYCHOLOGICAL SERVICES                  | 1,087,478           | 1,087,994                    | 1,088,494                   | 1,136,752                   | 1,136,002                   |
| 2150                                | SPEECH/ HEARING SERVICES                | 1,324,126           | 1,388,943                    | 1,434,225                   | 1,572,018                   | 1,547,170                   |
| 2190                                | TESTING                                 | 9,439               | 21,030                       | 26,288                      | 6,437                       | 13,373                      |
| 2210                                | INSTRUCTIONAL SERVICES/ STAFF DEV.      | 1,373,962           | 1,172,636                    | 1,243,632                   | 1,335,815                   | 1,247,250                   |
| 2221                                | EDUCATIONAL MEDIA SERVICES              | 524,773             | 620,544                      | 642,068                     | 670,000                     | 641,500                     |
| 2222                                | LIBRARY SERVICES                        | 985,132             | 1,006,992                    | 1,024,435                   | 1,007,717                   | 981,418                     |
| 2223                                | AUDIO-VISUAL SERVICES                   | 192,306             | 163,735                      | 175,684                     | 179,797                     | 168,121                     |
| 2225                                | COMPUTER INSTRUCTION SERVICES           | 1,488,935           | 1,260,603                    | 1,527,647                   | 1,385,669                   | 1,313,867                   |
| 2310                                | BOARD OF EDUCATION SERVICES             | 158,696             | 154,603                      | 194,803                     | 196,684                     | 192,822                     |
| 2317                                | STAFF RELATIONS/NEGOTIATIONS            | 27,882              | 16,800                       | 16,800                      | 31,000                      | 30,850                      |
| 2320                                | OFFICE OF THE SUPERINTENDENT            | 241,917             | 250,560                      | 292,391                     | 228,375                     | 228,075                     |
| 2321                                | ASSISTANT SUPERINTENDENT'S OFFICE       | 196,177             | 195,650                      | 196,550                     | 202,897                     | 202,522                     |
| 2329                                | PERSONNEL DEPARTMENT                    | 417,974             | 498,227                      | 514,169                     | 439,732                     | 439,020                     |
| 2400                                | OFFICE OF PRINCIPAL SERVICES            | 4,764,707           | 5,051,996                    | 5,161,203                   | 5,049,306                   | 4,926,660                   |
| 2510                                | FISCAL SERVICES                         | 4,113,724           | 18,115,570                   | 3,964,268                   | 17,867,337                  | 17,812,700                  |
| 2610                                | MAINTENANCE OF PLANT                    | 2,439,334           | 2,302,256                    | 2,613,056                   | 2,661,452                   | 2,348,882                   |
| 2620                                | OPERATION OF BUILDING SERVICES          | 6,814,739           | 5,870,995                    | 5,995,897                   | 6,361,412                   | 6,054,575                   |
| 2700                                | STUDENT TRANSPORTATION (REIMB.)         | 5,236,104           | 5,506,664                    | 5,506,664                   | 5,526,275                   | 5,523,880                   |
| 2790                                | OTHER STUDENT TRANSPORTATION            | 146,983             | 150,000                      | 150,000                     | 155,000                     | 155,000                     |
| 2900                                | OTHER EDUCATIONAL COSTS                 | 1,050,674           | 1,120,514                    | 1,120,514                   | 1,045,877                   | 1,045,877                   |
| 2902                                | PROGRAM/INSTRUCTIONAL IMPROVEMENTS      | 369,729             | 266,434                      | 352,716                     | 300,129                     | 257,320                     |
| 3100                                | BRISTOL SCHOOL LUNCH PROGRAM            | 209,000             | 0                            | 0                           | 0                           | 0                           |
| 3200                                | ENTERPRISE OPERATIONS                   | 418,127             | 461,420                      | 462,675                     | 474,644                     | 469,875                     |
| 3210                                | ATHLETICS                               | 1,075,960           | 1,082,323                    | 1,138,011                   | 1,129,935                   | 1,115,906                   |
| 6110                                | TUITION TO CONNECTICUT SCHOOL DISTRICTS | 1,351,635           | 1,585,132                    | 1,585,132                   | 1,588,190                   | 1,588,190                   |
| 6130                                | TUITION TO NON-PUBLIC SCHOOLS           | 3,485,335           | 3,453,563                    | 3,453,563                   | 3,697,823                   | 3,597,823                   |
| <b>TOTAL EDUCATION EXPENDITURES</b> |   | <b>\$88,335,286</b> | <b>\$102,263,330</b>         | <b>\$89,534,883</b>         | <b>\$104,041,122</b>        | <b>\$102,563,330</b>        |

**Board of Education Summary (continued)**

| <b><u>SCHOOL FACILITIES</u></b> |               |
|---------------------------------|---------------|
| <b>School</b>                   | <b>Grades</b> |
| Bristol Central High School     | 9 - 12        |
| Bristol Eastern High School     | 9 - 12        |
| Chippens Hill Middle School     | 6 - 8         |
| Memorial Blvd. Middle School    | 6 - 8         |
| Northeast Middle School         | 6 - 8         |
| Edgewood School                 | K - 5         |
| Ellen P. Hubbell School         | K - 5         |
| Greene-Hills School             | K - 5         |
| Ivy Drive School                | K - 5         |
| John J. Jennings School         | K - 5         |
| Mountain View School            | K - 5         |
| Clara T. O'Connell School       | K - 5         |
| South Side School               | K - 5         |
| Stafford School                 | K - 5         |

**Board of Education Members**

**Expiration of Term**

|                                 |         |
|---------------------------------|---------|
| Barbara Y. Doyle, Chairman      | 11/2011 |
| Julie M. Luczkow, Vice Chairman | 11/2011 |
| Karen Vibert, Secretary         | 11/2011 |
| Jane E. Anastasio               | 11/2011 |
| Margaret Bonola                 | 11/2011 |
| Sherry A. Turcotte              | 11/2011 |
| Thomas P. O'Brien               | 11/2011 |
| Amy Coan                        | 11/2011 |
| Christopher C. Wilson           | 11/2011 |

All Members are elected to a 4 year term.

Council Liaison (not a voting member) Council Member Block



**Program Summaries-  
Board of Education Summary**

---

**Board of Education Summary (continued)**

**Clearance A. Bingham School**

To the Families, Staff and Students of Bingham School,

I would like to take this opportunity to thank each of you for your hard work and efforts as we bring not only the school year to a close; but are also closing the doors of our wonderful building. Over the past 90 years, thousands of students have had wonderful experiences here and I am so pleased to have been a part of that this year. Our focus in 2009-10 revolved around building reading stamina – that is simply reading, reading and then reading some more and I am so proud to say we have achieved our goal. Our reading logs are coming in with record minutes read and our success on our reading assessments can attest to that! We truly read to develop a love for literature and integrated that into our writing workshop. Every time I walk into our classes, I not only see kids reading – but I see kids literally engulfed in a good book. There is nothing more rewarding than that.

To the students of Bingham – I wish you the best of luck next year. You have worked hard and you will be a great addition to each of your new schools. Remember the efforts you put in everyday on everything you did and bring that with you to your new building. To the staff and families; thank you for your countless hours of dedication for our kids. Together we were able to provide each of our students with an outstanding learning experience while bringing this school year to a very special close. Have a wonderful summer, continue your reading, and enjoy the upcoming 'lazy days of summer.' Remember, each of you made Bingham School a better place to be.

Mr. David Huber, Principal

