

SPECIAL REVENUE FUNDS

Program Summary

Special Revenue Funds are used to account for the proceeds of specific revenue sources (other than expendable trusts or major capital projects) that are legally restricted to expenditures for specified purposes. A summary of the Special Revenue Funds as presented in the budget document behind the “Special Revenue” tab are shown below.

The Special Revenue Funds in the 2009-2010 budget consist of the following:

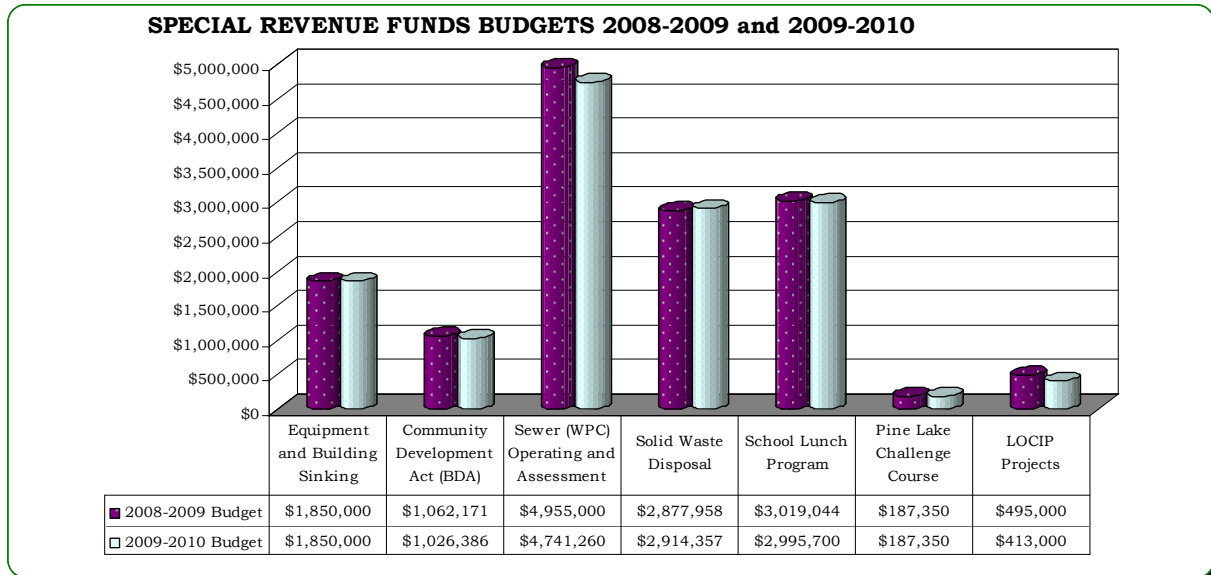
- EQUIPMENT AND BUILDING SINKING
- COMMUNITY DEVELOPMENT ACT- BRISTOL DEVELOPMENT AUTHORITY
- SEWER (WPC) OPERATING AND ASSESSMENT
- SOLID WASTE DISPOSAL
- SCHOOL LUNCH PROGRAM
- PINE LAKE CHALLENGE COURSE
- LOCIP PROJECTS

Shown below is a listing of the special revenue funds' prior year expenditures (2007-2008) as well as budgets for fiscal year 2008-2009 and fiscal year 2009-2010.

Special Revenue Funds Budgets and Expenditures			
	<u>2007-2008</u>	<u>2008-2009</u>	<u>2009-2010</u>
	<u>Actual</u>	<u>Budget</u>	<u>Budget</u>
Equipment and Building Sinking	\$1,750,000	\$1,850,000	\$1,850,000
Community Development Act (BDA)	\$940,798	\$1,062,171	\$1,026,386
Sewer (WPC) Operating and Assessment	\$4,472,894	\$4,955,000	\$4,741,260
Solid Waste Disposal	\$2,900,420	\$2,877,958	\$2,914,357
School Lunch Program	\$3,238,927	\$3,019,044	\$2,995,700
Pine Lake Challenge Course	\$173,608	\$187,350	\$187,350
LOCIP Projects	\$482,756	\$495,000	\$413,000
Total Special Revenue Funds	\$13,959,403	\$14,446,523	\$14,128,053

**Program Summaries-
Special Revenue Funds**

Special Revenue Funds (continued)



EQUIPMENT AND BUILDING SINKING FUND

Service Narrative

The Equipment and Building Sinking Fund is utilized to set aside funds for the purchase of major pieces of equipment, funds for building purchases, or building upgrades that the City may decide to pursue. It is primarily funded by transfers from the General Fund. A balance of approximately \$700,000 is available within this fund.

Budget Highlights

1018108 EQUIPMENT AND BUILDING SINKING FUND

OBJECT	PROJECT	DESCRIPTION	PRIOR YEAR ACTUAL 2007-2008	ORIGINAL BUDGET 2008-2009	REVISED BUDGET 2008- 2009	BUDGET REQUEST 2009-2010	JOINT BOARD 2009-2010
OPERATING TRANSFERS OUT							
591001		TRANSFER TO GENERAL FUND	\$1,750,000	\$1,850,000	\$1,850,000	\$1,850,000	\$1,850,000
TOTAL OPERATING TRANSFERS OUT			\$1,750,000	\$1,850,000	\$1,850,000	\$1,850,000	\$1,850,000
TOTAL EQUIPMENT AND BUILDING SINKING FUND			\$1,750,000	\$1,850,000	\$1,850,000	\$1,850,000	\$1,850,000

BRISTOL DEVELOPMENT AUTHORITY

Jonathan Rosenthal, Director
Office: (860) 584-6185
jonathanrosenthal@ci.bristol.ct.us

Service Narrative

The Office of the Bristol Development Authority is responsible for Economic and Community Development in the City of Bristol. The department is also responsible for writing major grants, is the successor agency to the Redevelopment Agency and has performed major lobbying functions at the state legislature and with the Connecticut Conference of Municipalities (CCM). The department is temporarily producing cable TV shows (CityWise) for the City. The department is governed by a nine-member, bi-partisan Board of the Development Authority and chaired by the Mayor. The Board of the Authority has full responsibility for the Community Development (CDBG funded) programs, review of applications for the Neighborhood Assistance Act, and for redevelopment activities which include the industrial park programs and downtown revitalization. Other economic development activities, lobbying, and grants fall under the direct review of the Mayor. It is the lead agency for downtown redevelopment.

There are seven staff persons. The two grants positions are funded directly by the City, while three other positions; a Community Development Coordinator, two program positions, and the department's Administrative Assistant are funded by both sources. The federal government requires a specific accounting for each portion of the salaries.

For more than a decade economic development efforts have concentrated upon attracting, retaining and growing industrial and office users for the City. This strategy helped to grow the commercial/industrial tax base and demonstrated the need to bring new, ready-to-build industrial land to the market. The creation of a new industrial park has been a decade in the making. Approximately 51 acres are poised for new industrial users as the Southeast Bristol Business Park.

Downtown redevelopment is a long-term challenge and has re-emerged in this decade as a priority. As much a fundamental quality of life issue as an economic development one, downtown promises to be a decade long and continuing effort to improve the physical environment, attract new businesses (both retail and office) and establish a new sense of purpose to the center of the City and hub of government for Connecticut's 11th largest municipality. One change was the creation of a temporary private corporation by the Mayor and City Council which gave authority for the 17-acre former mall site to a private, non-profit entity.

Fiscal Year 2009 Major Service Level Accomplishments

- Economic Development: Sale of two Southeast Bristol Business Park lots and the construction of an 11,000 square foot facility by CMI Specialty Products. The Bland Company broke ground for a 16,500 square foot manufacturing facility. Beekley Corporation completed its new 30,000 square foot facility. Clark Western Steel Framing Systems began its operations at the Bristol Business Center and ESPN began construction on its second digital center.

**Program Summaries-
Special Revenue Funds**

Special Revenue Funds - Bristol Development Authority (continued)

- Community Development: The Bristol Development Authority is administering an A.R.R.A. of 2009 grant to provide housing rehabilitation assistance to low- to moderate-income homeowners throughout the City of Bristol.

Fiscal Year 2010 Major Service Level Goals

- Economic Development: Continue to market and attract tenants to the Southeast Bristol Business Park by providing a competitive environment utilizing tax and grant incentives. Reach out to existing manufacturing businesses for retention and expansion opportunities. Bid and construct Main Street Streetscape improvements.
- Grants: To aggressively seek grants for city projects and services, especially opportunities afforded through the American Recovery and Revitalization Act (ARRA).
- Community Development: To produce a Five-Year Consolidated Plan for 2010-2015. With community input, the Consolidated Plan establishes the City of Bristol priorities and goals for utilizing the annual allocation of U.S. Department of Housing and Urban Development Community Development Block Grant funding. The Bristol Development Authority will use the Consolidated Plan to administer the annual fund distribution.

Long Term Goals

- Economic Development: To fill the Southeast Bristol Industrial Park and assist in the relocation and expansion of manufacturing and distribution companies. To provide appropriate assistance to all companies. To plan and direct the redevelopment of downtown Bristol including façade improvement, restaurant attraction, and pedestrian and parking improvements.
- Grants: To identify outside funding opportunities and coordinate funding needs which meet the requirements of the City of Bristol functional areas and departments.
- Community Development: The Bristol Development Authority will continue to provide Housing Rehabilitation grants to Bristol homeowners. Such assistance preserves the housing stock, and allows low to moderate income households to remain in their homes.

Budget Highlights

104 BRISTOL DEVELOPMENT AUTHORITY REVENUE

OBJECT	PROJECT	DESCRIPTION	PRIOR YEAR ACTUAL 2007-2008	ORIGINAL BUDGET 2008-2009	REVISED BUDGET 2008-2009	BUDGET REQUEST 2009-2010	JOINT BOARD 2009-2010
1044101 BDA- CITYSHARE							
490001	G2010	TRANSFER IN GENERAL FUND	\$374,645	\$370,985	\$370,985	\$370,450	\$370,450
460000		INTEREST INCOME	3,134	0	0	0	0
TOTAL BDA- CITYSHARE			\$377,779	\$370,985	\$370,985	\$370,450	\$370,450
1044103 BDA- CDBG- ADMINISTRATION							
431025	G2010	CDBG ENTITLEMENT	\$519,130	\$601,472	\$601,472	\$601,472	\$601,472
431083	G2010	REPROGRAMMING FUNDS CDBG	0	37,019	37,019	17,626	17,626
431084	G2010	PROGRAM INCOME	36,838	52,695	52,695	36,838	36,838
TOTAL BDA- CDBG- ADMINISTRATION			\$555,968	\$691,186	\$691,186	\$655,936	\$655,936
TOTAL BRISTOL DEVELOPMENT AUTHORITY			\$933,747	\$1,062,171	\$1,062,171	\$1,026,386	\$1,026,386

**Program Summaries-
Special Revenue Funds**

Special Revenue Funds - Bristol Development Authority (continued)

1044101 BDA- CITYSHARE			PRIOR YEAR ACTUAL 2007-2008	ORIGINAL BUDGET 2008-2009	REVISED BUDGET 2008-2009	BUDGET REQUEST 2009-2010	JOINT BOARD 2009-2010
OBJECT	PROJECT	DESCRIPTION					
SALARIES							
514000	G2010	REGULAR WAGES	\$211,859	\$243,385	\$243,385	\$247,270	\$247,270
515100	G2010	OVERTIME WAGES	1,305	5,000	5,000	2,500	2,500
517000	G2010	OTHER WAGES	13,685	2,250	2,250	2,000	2,000
TOTAL SALARIES			\$226,848	\$250,635	\$250,635	\$251,770	\$251,770
CONTRACTUAL SERVICES							
531000	G2010	PROFESSIONAL FEES AND SERVICES	\$763	\$3,500	\$3,500	\$1,500	\$1,500
531140	G2010	TRAINING		1,000	1,000	1,000	1,000
543000	G2010	REPAIRS AND MAINTENANCE	362	675	675	655	655
553000	G2010	TELEPHONE	65	850	850	850	850
553100	G2010	POSTAGE	1,163	1,030	1,030	1,030	1,030
554000	G2010	TRAVEL REIMBURSEMENT	1,584	1,500	1,500	1,500	1,500
555000	G2010	PRINTING AND BINDING	85	1,340	1,340	800	800
557700	G2010	ADVERTISING	1,359	6,330	6,330	8,000	8,000
581120	G2010	CONFERENCES AND MEMBERSHIPS	3,311	3,795	3,795	3,300	3,300
581260	G2010	MISCELLANEOUS PROMOTIONS	1,209	1,750	1,750	1,000	1,000
581270	G2010	TRADE SHOWS	545	1,500	1,500	630	630
587467	G2010	DOWNTOWN REVITALIZATION ACTIVITIES	3,991	10,000	10,000	2,000	2,000
TOTAL CONTRACTUAL SERVICES			\$14,437	\$33,270	\$33,270	\$22,265	\$22,265
BENEFITS							
520000	G2010	EMPLOYEE BENEFITS	\$1,333	\$1,500	\$1,500	\$1,500	\$1,500
520700	G2010	F.I.C.A	13,770	15,790	15,790	15,610	15,610
520750	G2010	MEDICARE INSURANCE	3,221	3,565	3,565	3,655	3,655
522000	G2010	L233 ALLOWANCE	0	250	250	0	0
TOTAL BENEFITS			\$18,323	\$21,105	\$21,105	\$20,765	\$20,765
SUPPLIES AND MATERIALS							
561800	G2010	PROGRAM SUPPLIES	\$3,694	\$2,000	\$2,000	\$2,500	\$2,500
569000	G2010	OFFICE SUPPLIES	1,159	1,100	1,100	2,100	2,100
TOTAL SUPPLIES AND MATERIALS			\$4,853	\$3,100	\$3,100	\$4,600	\$4,600
OPERATING TRANSFERS OUT							
591500	G2010	TRANSFER TO INTERNAL SERVICE	\$38,734	\$62,875	\$62,875	\$71,050	\$71,050
591300	G2010	TRANSFER TO CAPITAL PROJECTS	80,000	0	0	0	0
TOTAL OPERATING TRANSFERS OUT			\$118,734	\$62,875	\$62,875	\$71,050	\$71,050
TOTAL BDA- CITYSHARE			\$383,195	\$370,985	\$370,985	\$370,450	\$370,450

**Program Summaries-
Special Revenue Funds**

Special Revenue Funds - Bristol Development Authority (continued)

1044102 BDA- REHABILITATION PRESERVATION

OBJECT	PROJECT	DESCRIPTION	PRIOR YEAR ACTUAL 2007-2008	ORIGINAL BUDGET 2008-2009	REVISED BUDGET 2008-2009	BUDGET REQUEST 2009-2010	JOINT BOARD 2009-2010
SALARIES							
514000	G2010	REGULAR WAGES	\$82,929	\$99,590	\$99,590	\$100,230	\$100,230
515100	G2010	OVERTIME- BDA REHAB	0	300	300	300	300
517000	G2010	OTHER WAGES	1,000	1,000	1,000	0	0
TOTAL SALARIES			\$83,929	\$100,890	\$100,890	\$100,530	\$100,530
BENEFITS							
520000	G2010	EMPLOYEE BENEFITS	\$329	\$300	\$300	\$300	\$300
520700	G2010	F.I.C.A.	5,345	6,255	6,255	6,255	6,255
520750	G2010	MEDICARE INSURANCE	1,250	1,460	1,460	1,460	1,460
522000	G2010	L233 ALLOWANCE	0	250	250	0	0
TOTAL BENEFITS			\$6,924	\$8,265	\$8,265	\$8,015	\$8,015
OTHER/MISCELLANEOUS							
587100	G2010	RESIDENTIAL REHABILITATION	\$154,580	\$80,000	\$80,000	\$215,803	\$215,803
589000	G2010	CONTINGENCY	0	0	0	7,372	7,372
TOTAL OTHER/MISCELLANEOUS			\$154,580	\$80,000	\$80,000	\$223,175	\$223,175
OPERATING TRANSFERS OUT							
591500	G2010	TRANSFER TO INTERNAL SERVICE	\$30,097	\$28,035	\$28,035	\$31,680	\$31,680
TOTAL OPERATING TRANSFERS OUT			\$30,097	\$28,035	\$28,035	\$31,680	\$31,680
TOTAL BDA- REHABILITATION			\$275,530	\$217,190	\$217,190	\$363,400	\$363,400

1044103 BDA- CDBG- ADMINISTRATION

OBJECT	PROJECT	DESCRIPTION	PRIOR YEAR ACTUAL 2007-2008	ORIGINAL BUDGET 2008-2009	REVISED BUDGET 2008-2009	BUDGET REQUEST 2009-2010	JOINT BOARD 2009-2010
SALARIES							
514000	G2010	REGULAR WAGES	\$52,039	\$63,932	\$63,932	\$67,135	\$67,135
TOTAL SALARIES			\$52,039	\$63,932	\$63,932	\$67,135	\$67,135
CONTRACTUAL SERVICES							
522000	G2010	LOCAL 233 YEARLY ALLOWANCE	\$0	\$0	\$0	\$0	\$0
531000	G2010	PROFESSIONAL FEES AND SERVICES	0	0	0	14,675	14,675
553000	G2010	TELEPHONE	0	300	300	300	300
553100	G2010	POSTAGE	307	430	430	450	450
554000	G2010	TRAVEL REIMBURSEMENT	1,569	2,120	2,120	2,120	2,120
555000	G2010	PRINTING AND BINDING	137	160	160	160	160
557700	G2010	ADVERTISING	3,675	2,600	2,600	3,600	3,600
581120	G2010	CONFERENCE AND MEMBERSHIPS	779	1,560	1,560	1,560	1,560
TOTAL CONTRACTUAL SERVICES			\$6,467	\$7,170	\$7,170	\$22,865	\$22,865
BENEFITS							
520000	G2010	EMPLOYEE BENEFITS	\$192	\$210	\$210	\$210	\$210
520700	G2010	F.I.C.A.	3,321	3,964	3,964	4,165	4,165
520750	G2010	MEDICARE INSURANCE	777	927	927	975	975
TOTAL BENEFITS			\$4,289	\$5,101	\$5,101	\$5,350	\$5,350
SUPPLIES AND MATERIALS							
561800	G2010	PROGRAM SUPPLIES	\$1,457	\$2,100	\$2,100	\$2,100	\$2,100
569000	G2010	OFFICE SUPPLIES	836	1,620	1,620	1,620	1,620
TOTAL SUPPLIES AND MATERIALS			\$2,292	\$3,720	\$3,720	\$3,720	\$3,720
MISCELLANEOUS							
589000	G2010	CONTINGENCY		\$3,000	\$3,000	\$3,000	\$3,000
587902	G2010	FAIR HOUSING	160	500	500	500	500
TOTAL MISCELLANEOUS			\$160	\$3,500	\$3,500	\$3,500	\$3,500
OPERATING TRANSFERS OUT							
591500	G2010	TRANSFER TO INTERNAL SERVICE	\$6,258	\$15,680	\$15,680	\$17,720	\$17,720
TOTAL OPERATING TRANSFERS OUT			\$6,258	\$15,680	\$15,680	\$17,720	\$17,720
TOTAL BDA- CDBG- ADMINISTRATION			\$71,506	\$99,103	\$99,103	\$120,290	\$120,290

**Program Summaries-
Special Revenue Funds**

Special Revenue Funds - Bristol Development Authority (continued)

1044104 BDA- PUBLIC SERVICE GRANTS

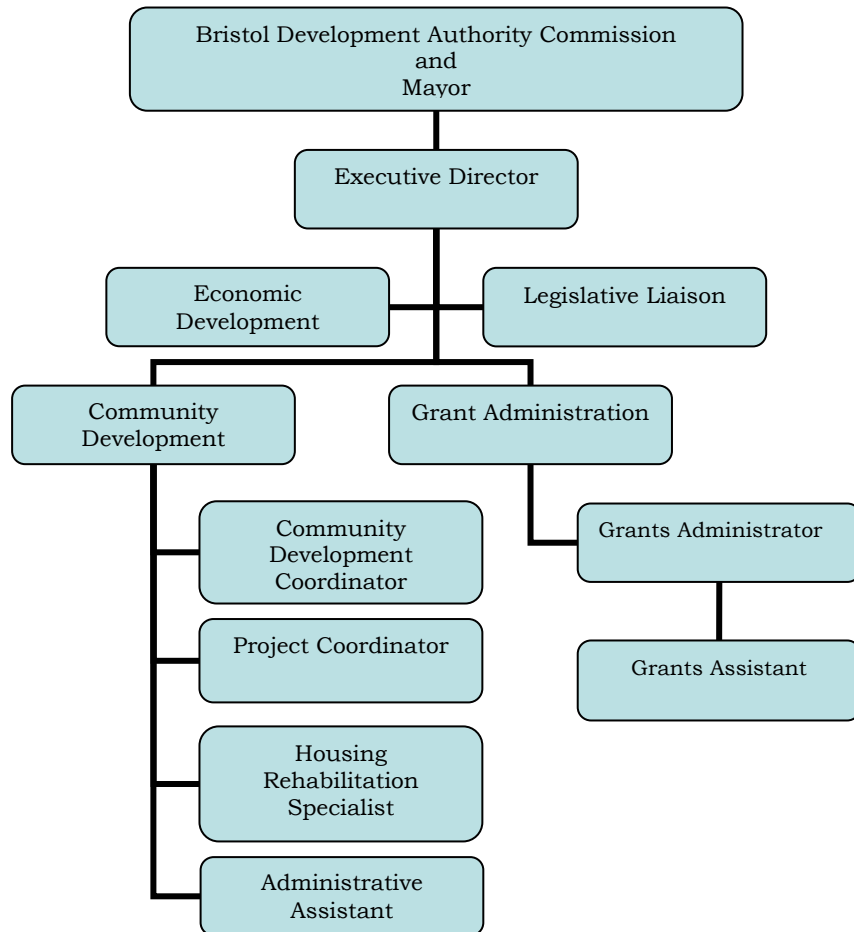
OBJECT	PROJECT	DESCRIPTION	PRIOR YEAR ACTUAL 2007-2008	ORIGINAL BUDGET 2008-2009	REVISED BUDGET 2008-2009	BUDGET REQUEST 2009-2010	JOINT BOARD 2009-2010
MISCELLANEOUS							
585011	G2010	ST. VINCENT DEPAUL	\$20,000	\$19,000	\$19,000	\$19,000	\$19,000
585013	G2010	PRUDENCE CRANDALL	9,000	9,000	9,000	9,000	9,000
585014	G2010	YWCA- SEXUAL ASSAULT	3,150	4,000	4,000	4,000	4,000
585016	G2010	BRISTOL BOYS/GIRLS CLUB OUTREACH	30,000	0	0	0	0
585023	G2010	FAMILY CENTER- SUMMER	1,500	0	0	0	0
585049	G2010	ELDERLY OUTREACH- CATHOLIC CHAR.	4,000	5,000	5,000	5,000	5,000
585061	G2010	YWCA PREVENTION EDUCATION	0	2,000	2,000	2,000	2,000
585089	G2010	BRISTOL BOYS/ GIRLS CLUB SUMMER	5,000	0	0	0	0
585104	G2010	SOUP KITCHEN	13,239	11,000	11,000	11,000	11,000
585114	G2010	O'CONNELL SCHOOL FAMILY RESOURCE CENTER	0	1,500	1,500	1,121	1,121
585116	G2010	BOYS AND GIRLS CLUB- OUTREACH PROGRAM	0	30,000	30,000	28,000	28,000
585118	G2010	BOYS AND GIRLS CLUB- MS SUMMER CAMP	0	5,000	5,000	5,000	5,000
585120	G2010	VNA OF CENTRAL CT- SENIOR WELLNESS	0	4,125	4,125	4,125	4,125
585602	G2010	NUTMEG MONITORING	2,000	0	0	0	0
587111	G2010	LITERACY VOLUNTEERS	3,500	3,500	3,500	3,500	3,500
587323	G2010	COMMUNITY COUNSELING OF CENTRAL CT	2,000	0	0	0	0
587324	G2010	ENVIRONMENTAL LEARNING SUMMER CAMP	3,000	4,000	4,000	4,000	4,000
TOTAL MISCELLANEOUS			\$96,389	\$98,125	\$98,125	\$95,746	\$95,746
TOTAL BDA- PUBLIC SERVICE GRANTS			\$96,389	\$98,125	\$98,125	\$95,746	\$95,746

1044105 BDA- CDBG PROJECTS

OBJECT	PROJECT	DESCRIPTION	PRIOR YEAR ACTUAL 2007-2008	ORIGINAL BUDGET 2008-2009	REVISED BUDGET 2008-2009	BUDGET REQUEST 2009-2010	JOINT BOARD 2009-2010
MISCELLANEOUS							
587002	G2010	BARC CEILING FAN PROJECT	\$5,000	\$0	\$0	\$0	\$0
587004	G2010	FAMILY CENTER- WINDOW REPLACEMENT	19,906	0	0	0	0
587110	G2010	COMMERCIAL REHABILITATION	69,981	135,557	135,557	0	0
587235	G2010	HISTORICAL SOCIETY- REPAIRS	0	15,000	15,000	0	0
587236	G2010	CHRISTIAN FELLOWSHIP CENTER- YOUTH CENTER	0	30,000	30,000	0	0
587237	G2010	BCO- KITCHEN REHABILITATION	0	23,624	23,624	0	0
587238	G2010	BOYS AND GIRLS CLUB- SIDEWALK REPLACEMENT	0	6,000	6,000	0	0
587239	G2010	BRISTOL PRESCHOOL- SECURITY SYSTEM	0	20,587	20,587	0	0
587282	G2010	BRISTOL ARTS	423	0	0	0	0
587285	G2010	BARC REHABILITATION- BOY STREET	0	24,000	24,000	0	0
587286	G2010	GREATER BRISTOL REALTY- LILLIAN PROJECT	0	22,000	22,000	0	0
587301	G2010	FAMILY CENTER- FACILITY	3,921	0	0	0	0
587305	G2010	BRISTOL HISTORICAL SOCIETY ROOF REPAIR	9,949	0	0	0	0
587307	G2010	BRISTOL HOUSING CAMBRIDGE PARK PLAYGROUND	4,998	0	0	0	0
587308	G2010	BOILER REPAIR- BOYS & GIRLS CLUB	0	0	0	10,000	10,000
587309	G2010	ADA, PLEASANT STREET- BOYS & GIRLS CLUB	0	0	0	12,000	12,000
587310	G2010	ROOF, UPSON STREET- BOYS & GIRLS CLUB	0	0	0	12,000	12,000
587311	G2010	BRISTOL HOUSING AUTHORITY- BONNIE ACRES	0	0	0	30,000	30,000
587312	G2010	BRISTOL ADULT RESOURCE CENTER- JEROME AVE	0	0	0	12,500	12,500
TOTAL MISCELLANEOUS			\$114,178	\$276,768	\$276,768	\$76,500	\$76,500
TOTAL BDA- CDBG PROJECTS			\$114,178	\$276,768	\$276,768	\$76,500	\$76,500

Special Revenue Funds - Bristol Development Authority (continued)

Organizational Chart



**Program Summaries-
Special Revenue Funds**

Special Revenue Funds - Bristol Development Authority (continued)

Bristol Development Authority Board

Mayor Arthur J. Ward, Chairman
Howard T. Schmelder, Vice-Chairman
Kenneth Cockayne, Councilman, Liaison
John S. Driscoll (Jack)
Jonathan Rosenthal, Exec. Director, BDA

Mike Rivers
Mickey Goldwasser
Donald Cassin
John Lefreniere
Charles Cyr

BDA Committees

Policy Committee

H. Schmelder (CH) Mayor Ward
D. Cassin

Industrial Development Committee

M. Rivers (CH) K. Cockayne
M. Goldwasser

Neighborhood Preservation Committee

J. LaFreniere (CH) C. Cyr
D. Cassin

Downtown Committee

Mayor Ward (CH) M. Goldwasser
J. Driscoll D. Cassin

Budget & Personnel Committee

J. Driscoll (CH) Mayor Ward
H. Schmelder M. Rivers

SEWER OPERATING & ASSESSMENT FUND

Brian Fowkes, Manager
75 Battisto Road
Office: (860) 584-3824
brianfowkes@ci.bristol.ct.us

Service Narrative

The Water Pollution Control Division of the Public Works Department is accounted for in the Sewer Operating and Assessment Fund and is charged with the operation and maintenance of the City's wastewater collection and treatment facilities. The Division provides sanitary sewer collection and treatment services to approximately 90% of the City's populated area. The Division operates and maintains an advanced wastewater reclamation plant with 10.75 MGD capacity, 15 pumping stations, 238 miles of sewer lines and 5,660 manholes. The Division also provides administrative services for the operation, oversees sewer usage billing performed by the City's Water Department and develops long term planning to assure the operation will meet the future needs of the Community. In accordance with State and Federal regulations the Division is required to maintain a Capital Reserve Fund adequately funded to meet the financial demands of all facility upgrades, modifications, and capital equipment replacement.

Fiscal Year 2009 Major Service Level Accomplishments

- The Division, through its consultant, completed an Infiltration and Inflow Analysis, a major field investigation of the sanitary sewer collection system of the sewer shed leading to the Broad Street pump station. The initial study quantified the amount of clean water entering the sewer system in 26 sewer districts. The districts with the highest rates of I/I are the subject of a more in-depth Sewer System Evaluation Study. This study will locate the line defects and develop rehabilitation contracts to correct the issues.
- The Division completed a study to evaluate its Broad Street pump station and other factors contributing to severe weather Sanitary Sewer Overflows (SSO) in the Forestville section of Bristol. A major design contract was awarded to prepare plans and specifications to install a second forcemain from the station to the treatment facility and to upgrade the station capacity and dependability.
- Completion of infrastructure upgrades at the treatment facility to improve the aeration process and other systems to improve energy efficiency. Fifty percent of the total project cost was recovered through an incentive payment from Northeast Utilities.
- Staff installed a high level flow diversion pipe to eliminate the potential for SSO's in the vicinity of the Julia Road pump station under an intertown agreement with the Town of Plainville.

**Program Summaries-
Special Revenue Funds**

Special Revenue Funds - Sewer Operating Assessment Fund (continued)

Fiscal Year 2010 Major Service Level Goals

- Begin construction of the East Bristol/Forestville Sanitary Sewer Overflow Reduction Project. The project will address reoccurring sanitary sewer flooding issues associated with wet weather conditions. The initial phase of the project will include the installation of an additional forcemain to the main treatment facility and the initial stages of mechanical upgrades at the Broad Street pump station.
- Conduct a Sewer System Evaluation Study (SSES) of the sewer districts identified in the I/I Analysis to locate system defects and develop a prioritized rehabilitation program. Work will include smoke testing, building inspections and other field work.

Performance Measures

Quantitative:

ACTIVITY	2007-2008 Actual	2008-2009 Estimated	2009-2010 Projected
Treatment Operations Activity			
Wastewater Treated	2.82 Billion gals	2.94 Billion gals	2.9 Billion gals
Solids processed	6,960 wet tons	6,800 wet tons	6,800 wet tons
Collection System Activity			
OT Requests for Sewer Maint.	12	9	7
Maintenance Activity			
OT Pump Station Repairs	7	7	7

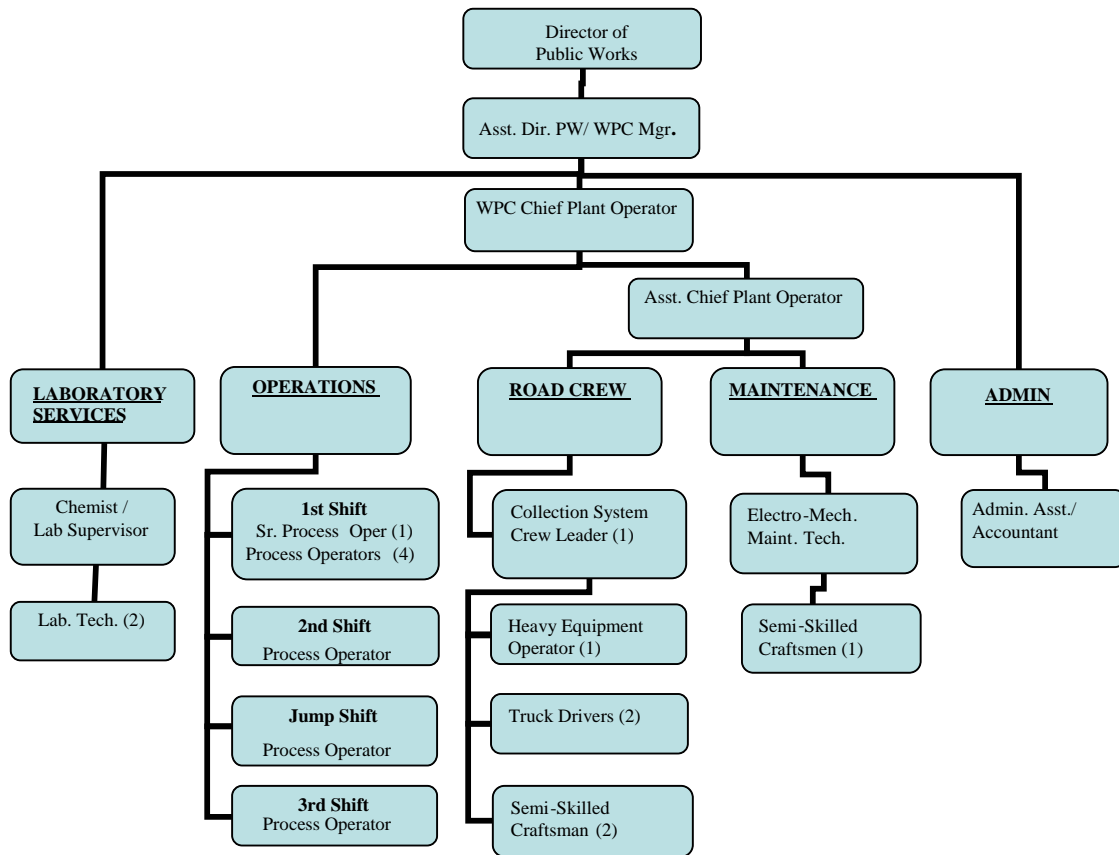
Expenditure & Position Summary

	2007-08	2008-09 Est.	2009-10 Proposed
Salary and Health Benefits	1,774,300	1,822,000	1,890,000
Full Time Positions	26	26	25

Note: The current level of staffing has been reduced from 40 positions in 1990.

Special Revenue Funds - Sewer Operating Assessment Fund (continued)

Organizational Chart



Water Pollution Control Facility



Screw Pumps lift the water from the primary clarifiers up into the aeration/nitrification tanks. Each screw pump can move 7,600 gallons per minute.

**Program Summaries-
Special Revenue Funds**

Special Revenue Funds - Sewer Operating Assessment Fund (continued)

Budget Highlights

Total Operating Budget for fiscal year 2009-2010 is \$ 4,741,260. Capital Outlay requests of \$216,000 include infrastructure maintenance at the main treatment plant.

The approved budget will fully fund the Division's annual debt service payments from annual operating revenue. Prior to fiscal year 2009, budgets drew down reserve funds to meet annual debt obligations.

1183014 WATER POLLUTION CONTROL REVENUE			PRIOR YEAR ACTUAL 2007-2008	ORIGINAL BUDGET 2008-2009	REVISED BUDGET 2008-2009	BUDGET REQUEST 2009-2010	JOINT BOARD 2009-2010
OBJECT	PROJECT	DESCRIPTION					
TAXES & PRIOR LEVIES							
410003		ASSESSMENTS-INTEREST, LIENS & PENALTIES	\$5,631	\$5,700	\$5,700	\$4,500	\$4,500
TOTAL TAXES & PRIOR LEVIES			\$5,631	\$5,700	\$5,700	\$4,500	\$4,500
FINES/FEES							
422005		CUSTOMER DUMPING FEES	\$39,547	\$45,100	\$45,100	\$30,000	\$30,000
422006		UNMETERED COMMERCIAL SEWER USER FEES	989,872	1,080,200	1,080,200	1,085,000	1,085,000
422007		UNMETERED DOMESTIC SEWER USER FEES	2,724,379	3,063,500	3,063,500	3,020,000	3,020,000
422008		UNMETERED FACTORY SEWER USER FEES	134,906	194,700	194,700	128,000	128,000
422009		UNMETERED PUBLIC SEWER USER FEES	212,331	228,800	228,800	231,000	231,000
TOTAL FINES/FEES			\$4,101,035	\$4,612,300	\$4,612,300	\$4,494,000	\$4,494,000
LICENSE, PERMITS, FEES							
442015		SEWER CONNECTION PERMITS	\$71,310	\$110,000	\$110,000	\$50,000	\$50,000
TOTAL LICENSE, PERMITS, FEES			\$71,310	\$110,000	\$110,000	\$50,000	\$50,000
CHARGES FOR SERVICES							
402000		SEWER ASSESSMENTS & ADJUSTMENTS	\$42,382	\$32,000	\$32,000	\$20,000	\$20,000
TOTAL CHARGES FOR SERVICES			\$42,382	\$32,000	\$32,000	\$20,000	\$20,000
INVESTMENT EARNINGS							
1181019	460000	INTEREST INCOME	\$103,825	\$110,000	\$110,000	\$80,000	\$80,000
TOTAL INVESTMENT EARNINGS			\$103,825	\$110,000	\$110,000	\$80,000	\$80,000
OTHER/MISCELLANEOUS REVENUE							
454001		MISCELLANEOUS- OTHER	\$7,807	\$8,000	\$8,000	\$7,000	\$7,000
454008		MISCELLANEOUS-UTILITY REVENUE	40,675	41,000	41,000	43,760	43,760
480013		MISCELLANEOUS REVENUE LIENS	8,583	4,000	4,000	8,000	8,000
480014		MISCELLANEOUS PENALTIES SEWER USER	42,131	32,000	32,000	34,000	34,000
TOTAL OTHER/MISCELLANEOUS			\$99,196	\$85,000	\$85,000	\$92,760	\$92,760
OTHER FINANCING SOURCES							
461002		BUDGETARY FUND BALANCE UNRESTRICTED	\$0	\$0	\$120,000	\$0	\$0
TOTAL OTHER FINANCING SOURCES			\$0	\$0	\$120,000	\$0	\$0
TOTAL WATER POLLUTION CONTROL			\$4,423,379	\$4,955,000	\$5,075,000	\$4,741,260	\$4,741,260

**Program Summaries-
Special Revenue Funds**

Special Revenue Funds - Sewer Operating Assessment Fund (continued)

1183014 WATER POLLUTION CONTROL EXPENDITURES			PRIOR YEAR ACTUAL 2007-2008	ORIGINAL BUDGET 2008-2009	REVISED BUDGET 2008- 2009	BUDGET REQUEST 2009-2010	JOINT BOARD 2009-2010
OBJECT	PROJECT	DESCRIPTION					
SALARIES							
514000		REGULAR WAGES	\$1,189,808	\$1,309,061	\$1,330,399	\$1,282,877	\$1,282,877
515100		OVERTIME	43,186	62,000	62,000	50,500	50,500
517000		OTHER WAGES	35,782	23,728	31,128	25,483	25,483
TOTAL SALARIES			\$1,268,776	\$1,394,789	\$1,423,527	\$1,358,860	\$1,358,860
CONTRACTURAL SERVICES							
522000		LOCAL 233 YEARLY ALLOWANCE	\$500	\$500	\$500	\$0	\$0
531000		PROFESSIONAL FEES AND SERVICES	9,486	22,000	22,000	15,000	15,000
531150		ADMINISTRATIVE FEES	52,115	53,600	53,600	53,600	53,600
534400		SEWER INSPECTIONS	0	5,000	5,000	0	0
541000		PUBLIC UTILITIES	845,475	890,000	890,000	880,000	880,000
541100		WATER AND SEWER CHARGES	7,596	9,900	9,900	9,000	9,000
542120		TIPPING FEES	453,147	520,000	520,000	465,000	465,000
543000		REPAIRS AND MAINTENANCE	47,817	66,000	66,320	66,000	66,000
543100		MOTOR VEHICLE SERVICE AND REPAIR	162	2,000	2,000	1,500	1,500
543110		MAJOR REPAIRS	82,400	90,000	93,220	80,000	80,000
544400		RENTS AND LEASES	1,055	3,000	4,140	2,500	2,500
553000		TELEPHONE	1,511	2,200	2,200	2,000	2,000
553100		POSTAGE	305	300	300	300	300
554000		TRAVEL REIMBURSEMENT	286	400	400	150	150
555000		PRINTING AND BINDING	0	200	200	150	150
557700		ADVERTISING	514	1,000	1,100	1,000	1,000
581120		CONFERENCES AND MEMBERSHIPS	383	600	600	550	550
581135		SCHOOLING AND EDUCATION	1,400	2,400	2,400	2,000	2,000
581280		LIEN FEES	4,510	4,500	4,510	5,500	5,500
589100		MISCELLANEOUS	6,899	8,000	8,000	7,000	7,000
TOTAL CONTRACTURAL SERVICES			\$1,515,561	\$1,681,600	\$1,686,390	\$1,591,250	\$1,591,250
BENEFITS							
520000		EMPLOYEE BENEFITS	\$3,527	\$3,780	\$3,780	\$3,641	\$3,641
520700		F.I.C.A.	78,976	86,539	86,539	83,911	83,911
520750		MEDICARE INSURANCE	18,469	20,239	20,239	19,624	19,624
TOTAL BENEFITS			\$100,972	\$110,558	\$110,558	\$107,176	\$107,176
SUPPLIES AND MATERIALS							
561150		LABORATORY SUPPLIES	\$15,079	\$17,000	\$17,000	\$16,000	\$16,000
561400		MAINTENANCE SUPPLIES AND MATERIALS	155,418	216,000	217,775	210,000	210,000
561800		PROGRAM SUPPLIES	64,692	72,000	74,450	66,000	66,000
562000		HEATING FUELS	71,763	82,000	82,000	80,400	80,400
562600		MOTOR FUELS	13,879	18,500	18,500	15,500	15,500
563000		MOTOR VEHICLE PARTS	1,697	6,000	6,000	5,800	5,800
563100		TIRES TUBES AND CHAINS	148	3,000	3,000	2,500	2,500
569000		OFFICE SUPPLIES	1,859	2,100	2,100	2,000	2,000
TOTAL SUPPLIES AND MATERIALS			\$324,535	\$416,600	\$420,825	\$398,200	\$398,200
CAPITAL OUTLAY							
570200	09041	ROOF REPLACEMENT SS&TB BUILDING	\$0	\$70,000	\$70,000	\$0	\$0
570200	09043	SLUDGE STORAGE BUILDING REPAIRS	0	40,000	40,000	0	0
570300	04035	SEWER REPLACEMENT PROGRAM	0	0	16,000	0	0
570300	05054	SEWER REPLACEMENT PROGRAM	0	0	60,000	0	0
570300	07039	FUEL TANK REPLACEMENT	60,530	0	0	0	0
570300	08071	CL & P ENERGY CONSERVATION	16,123	0	3,360	0	0
570400	06025	SECONDARY CLARIFIER BRUSHES	2,500	0	0	0	0
570400	07031	BEARING REPLACEMENT	6,608	0	0	0	0
570400	07036	VIDEO INSPECTION CAMERA	11,500	0	0	0	0
570400	07038	AERATION SYSTEM BLOWER REPLACEMENT	54,181	0	0	0	0

**Program Summaries-
Special Revenue Funds**

Special Revenue Funds - Sewer Operating Assessment Fund (continued)

CAPITAL OUTLAY CONTINUED

570400	08048	BPF FEED PUMP & VARIABLE SPEED DRIVE	37,230	0	0	0	0
570400	08049	WAS PUMP REPLACEMENT	0	0	18,428	0	0
570400	08050	DEWATERING SCREW REPLACEMENT	15,754	0	0	0	0
570400	08052	SCREW PUMP UPGRADE	39,345	0	0	0	0
570400	08053	SPRAY WATER PUMPS	12,500	0	0	0	0
570400	08054	SCREENING CONVEYOR	58,486	0	6,500	0	0
570400	08056	SECONDMIXER FOR PUMP HOUSE	0	0	4,000	0	0
570400	08057	EMERGENCY RESPONSE EQUIPMENT- BYPASS	29,819	0	0	0	0
570400	09038	WAS PUMP REPLACEMENT	0	21,000	21,000	0	0
570400	09039	PUMP REPLACEMENT- CHERRY HILL P/S	0	13,000	13,000	0	0
570400	09040	SCREENINGS PROCESSOR- BROAD STREET P/S	0	55,000	60,000	0	0
570400	09042	AUTOMATIC SAMPLER REPLACEMENT	0	7,000	5,880	0	0
570400	09045	VARIABLE SPEED DRIVES- BOIVIN STREET P/S	0	11,000	11,000	0	0
570400	09046	TRAILER MOUNTED COMPRESSOR	0	12,000	13,120	0	0
570400	09062	SCREW PUMP	0	0	40,000	0	0
570500	08051	MECHANICS TRUCK (CRANE & SIDE BOXES)	63,167	0	0	0	0
570500	08055	FORKLIFT REPLACEMENT	16,500	0	0	0	0
570900	04033	PLANT DATA GATHERING SYSTEM	1,885	0	209	0	0
570900	05049	PLANT SCADA UPGRADES- PHASE 2	18,783	0	21,235	0	0
570900	06027	WET WELL MIXES W/ WEIGHTED STAND	4,900	0	0	0	0
570900	06029	JULIA & CHERRY PUMP STATION DRIVEWAY REI	12,023	0	9,587	0	0
570900	07028	SAND BLAST	43,088	0	0	0	0
570900	07029	ALARM PANEL	2,000	0	0	0	0
570900	07044	SCREW PUMP REPAIR	145,098	0	0	0	0
570900	09044	UNDERGROUND ELECTRIC CONDUIT REPLACE.	0	12,000	12,000	0	0
579999		2009-2010 CAPITAL OUTLAY REQUEST	0	0	0	216,000	216,000
TOTAL CAPITAL OUTLAY			\$652,020	\$241,000	\$425,319	\$216,000	\$216,000
OTHER/MISCELLANEOUS							
520400		WORKERS' COMPENSATION	\$0	\$25,000	\$25,000	\$20,000	\$20,000
552100		LIABILITY INSURANCE	46,864	50,200	50,200	52,000	52,000
589000		CONTINGENCY	0	66,055	3,907	80,960	80,960
589120		REFUNDS OF SEWER USER FEES	455	2,000	2,000	1,500	1,500
TOTAL OTHER/ MISCELLANEOUS			\$47,319	\$143,255	\$81,107	\$154,460	\$154,460
OPERATING TRANSFERS OUT							
591001		TRANSFERS TO GENERAL FUND	\$5,154	\$2,000	\$2,000	\$1,000	\$1,000
591300		TRANSFERS TO SPECIAL REVENUE	54,000	0	0	0	0
591300		TRANSFERS TO CAPITAL PROJECTS	400,000	555,300	583,700	469,300	469,300
591500		TRANSFERS TO INTERNAL SERVICE	404,557	409,898	409,898	445,014	445,014
TOTAL OPERATING TRANSFERS OUT			\$863,711	\$967,198	\$995,598	\$915,314	\$915,314
TOTAL WATER POLLUTION CONTROL			\$4,772,894	\$4,955,000	\$5,143,324	\$4,741,260	\$4,741,260



**Program Summaries-
Special Revenue Funds**

SOLID WASTE DISPOSAL FUND

Service Narrative

The Solid Waste Disposal fund is used to account for the operations of the City's solid waste disposal program. All solid waste expenditures are made from this fund and are paid to Bristol Resource Recovery Facility (BRRFOC). This includes all costs for the disposal of City refuse collected by the City's Public Works Solid Waste Division and for private haulers who are charged to bring refuse to the Covanta-Bristol Facility, a trash to energy plant. This fund is funded by a transfer from the General Fund for City refuse, and the private haulers are billed monthly based on tonnage.

Budget Highlights

1213016 SOLID WASTE DISPOSAL FUND REVENUE

OBJECT	PROJECT	DESCRIPTION	PRIOR YEAR ACTUAL 2007-2008	ORIGINAL BUDGET 2008-2009	REVISED BUDGET 2008-2009	BUDGET REQUEST 2009-2010	JOINT BOARD APPROVED 2009-2010
LICENSE, PERMITS, FEES							
442017		SOLID WASTE DISPOSAL PERMIT	\$171,700	\$178,000	\$178,000	\$175,000	\$175,000
TOTAL LICENSE, PERMITS, FEES			\$171,700	\$178,000	\$178,000	\$175,000	\$175,000
CHARGES FOR SERVICES							
450114		HAULER CHARGES	\$1,355,495	\$1,417,813	\$1,417,813	\$1,390,827	\$1,390,827
TOTAL CHARGES FOR SERVICES			\$1,355,495	\$1,417,813	\$1,417,813	\$1,390,827	\$1,390,827
INVESTMENT EARNINGS							
460000		INTEREST INCOME	\$34,742	\$37,500	\$37,500	\$19,000	\$19,000
460006		INTEREST ACCOUNTS RECEIVABLE	0	0	0	0	0
TOTAL INVESTMENT EARNINGS			\$34,742	\$37,500	\$37,500	\$19,000	\$19,000
OTHER/MISCELLANEOUS REVENUE							
480000		CITY OF BRISTOL HOST FEE	\$96,717	\$84,170	\$84,170	\$84,170	\$84,170
TOTAL OTHER/MISCELLANEOUS			\$96,717	\$84,170	\$84,170	\$84,170	\$84,170
OPERATING TRANSFERS IN							
490001		TRANSFER IN GENERAL FUND	\$1,301,425	\$1,160,475	\$1,160,475	\$1,245,360	\$1,245,360
TOTAL OPERATING TRANSFERS IN			\$1,301,425	\$1,160,475	\$1,160,475	\$1,245,360	\$1,245,360
TOTAL SOLID WASTE DISPOSAL FUND			\$2,960,079	\$2,877,958	\$2,877,958	\$2,914,357	\$2,914,357

1213016 SOLID WASTE DISPOSAL FUND EXPENDITURES

OBJECT	PROJECT	DESCRIPTION	PRIOR YEAR ACTUAL 2007-2008	ORIGINAL BUDGET 2008-2009	REVISED BUDGET 2008-2009	BUDGET REQUEST 2009-2010	JOINT BOARD APPROVED 2009-2010
CONTRACTUAL SERVICES							
542140		CITY REFUSE	\$1,542,047	\$1,460,145	\$1,460,145	\$1,523,530	\$1,523,530
542150		PRIVATE HAULER REFUSE	1,358,373	1,417,813	1,417,813	1,390,827	1,390,827
TOTAL CONTRACTUAL SERVICES			\$2,900,420	\$2,877,958	\$2,877,958	\$2,914,357	\$2,914,357
SOLID WASTE DISPOSAL FUND TOTAL			\$2,900,420	\$2,877,958	\$2,877,958	\$2,914,357	\$2,914,357



Bristol's "Trash to Energy" Facility owned and operated by Covanta Energy Corp.

SCHOOL LUNCH PROGRAM

Greg Boulanger, Director
Office: (860) 584-7984
gregboulanger@ci.bristol.ct.us

Service Narrative

The Bristol School Food Services Department operates under the direction of the Bristol Board of Education, Child Nutrition Services, and USDA Child Nutrition Program. The district annually adopts the National School Breakfast and National School Lunch Programs. The School Food Services Department is “administratively reviewed” by the State of Connecticut Department of Education, Child Nutrition Services. The recent Administrative Review resulted in a favorable review.

The department’s mission is to provide students with healthy, nutritious and appealing foods in a timely manner and in a pleasant environment every day.

The district enrollment for fiscal year 2009 was approximately 8,800. The food services department served 1,060,233 total meals during the past school year 07/08 with 63.57 percent of students purchasing reimbursable meals in the National School Lunch Program. In addition to the National School Lunch Program and National School Breakfast Program the department also operates a Special Milk Program and After School Snack Program. The School Breakfast Program was expanded to include all schools. Additionally, a grant was received to serve Fresh Fruit & Vegetables at O’Connell School.

The program receives funding through Department of Education Child Nutrition Offices, through both federal and state reimbursements and grants, and through cash sales. The department operates 16 food services sites throughout the district.

The main office for the Department of Food Services is at the Board of Education building, 129 Church St., Room 26.

Budget Highlights

1275000 SCHOOL LUNCH PROGRAM REVENUE

OBJECT	PROJECT	DESCRIPTION	PRIOR YEAR ACTUAL 2007-2008	ORIGINAL BUDGET 2008-2009	REVISED BUDGET 2008-2009	BUDGET REQUEST 2009-2010	JOINT BOARD 2009-2010
CHARGES FOR SERVICES							
450307		SCHOOL LUNCHES	\$1,608,407	\$1,654,892	\$1,654,892	\$1,537,188	\$1,537,188
450308		OTHER SALES	32,951	49,000	49,000	45,000	45,000
TOTAL CHARGES FOR SERVICES			\$1,641,358	\$1,703,892	\$1,703,892	\$1,582,188	\$1,582,188
INVESTMENT EARNINGS							
460000		INTEREST INCOME	\$4,437	\$5,000	\$5,000	\$0	\$0
TOTAL INVESTMENT EARNINGS			\$4,437	\$5,000	\$5,000	\$0	\$0
FEDERAL GRANTS							
431007		FEDERAL REIMBURSEMENT	\$1,299,788	\$1,165,152	\$1,165,152	\$1,266,305	\$1,266,305
TOTAL FEDERAL GRANTS			\$1,299,788	\$1,165,152	\$1,165,152	\$1,266,305	\$1,266,305
STATE GRANTS							
432038		MISC. STATE REIMBURSEMENT	\$147,207	\$145,000	\$145,000	\$147,207	\$147,207
TOTAL STATE GRANTS			\$147,207	\$145,000	\$145,000	\$147,207	\$147,207
TOTAL SCHOOL LUNCH REVENUE			\$3,092,789	\$3,019,044	\$3,019,044	\$2,995,700	\$2,995,700

**Program Summaries-
Special Revenue Funds**

Special Revenue Funds - School Lunch Program (continued)

C4003100 SCHOOL LUNCH PROGRAM EXPENDITURES

OBJECT	PROJECT	DESCRIPTION	PRIOR YEAR ACTUAL 2007-2008	ORIGINAL BUDGET 2008-2009	REVISED BUDGET 2008-2009	BUDGET REQUEST 2009-2010	JOINT BOARD 2009-2010
SALARIES							
512100		SUPERVISOR'S CAFETERIA	\$103,110	\$115,500	\$115,500	\$123,628	\$123,628
512110		CAFETERIA WORKERS	1,029,057	997,565	997,565	999,242	999,242
512120		CAFETERIA DRIVERS	9,135	1,000	1,000	1,000	1,000
512130		REPLACEMENTS	27,560	20,000	20,000	16,000	16,000
TOTAL SALARIES			\$1,168,862	\$1,134,065	\$1,134,065	\$1,139,870	\$1,139,870
BENEFITS							
520700		FICA	\$71,147	\$68,520	\$68,520	\$69,844	\$69,844
520750		MEDICARE	16,640	16,444	16,444	16,525	16,525
TOTAL BENEFITS			\$87,787	\$84,964	\$84,964	\$86,369	\$86,369
SUPPLIES AND MATERIALS							
561600		FOOD SUPPLIES	\$1,428,310	\$1,216,364	\$1,216,364	\$1,164,461	\$1,164,461
561700		SCHOOL LUNCH SUPPLIES	152,689	130,000	130,000	130,000	130,000
TOTAL SUPPLIES AND MATERIALS			\$1,580,999	\$1,346,364	\$1,346,364	\$1,294,461	\$1,294,461
OTHER/MISCELLANEOUS							
581500		NON-LUNCH EXPENSE	\$15,775	\$15,000	\$15,000	\$15,000	\$15,000
TOTAL OTHER/MISCELLANEOUS			\$15,775	\$15,000	\$15,000	\$15,000	\$15,000
OPERATING TRANSFERS OUT							
591500		TRANSFER OUT INTERNAL SERVICE	\$385,504	\$438,601	\$438,601	\$460,000	\$460,000
TOTAL OPERATING TRANSFERS OUT			\$385,504	\$438,601	\$438,601	\$460,000	\$460,000
TOTAL SCHOOL LUNCH EXPENDITURES			\$3,238,927	\$3,018,994	\$3,018,994	\$2,995,700	\$2,995,700



PINE LAKE CHALLENGE COURSE FUND

Eileen McNulty, Director
Don Gagliardi, Coordinator
Office: (860) 314-4690
eileenmcnulty@ci.bristol.ct.us

Service Narrative

Bristol Youth Services operates a state-of-the-art outdoor challenge course and experiential adventure-based programs. The Pine Lake Challenge Course (PLCC) is nestled in a small wooded area of a public park within the urban community. The Course consists of more than 45 different elements or stations constructed with a series of ropes, cables, and obstacles in a grove of trees and an abutting playing field. The Pine Lake Challenge Course and its facilities span over seven acres.

The Challenge Course elements are designed to create certain challenges for a group and for individuals with the support of a group. The elements and stations can be adapted for comparable adventure-based experiences for individuals with physical disabilities. The elements are designed to test teamwork, communication skills, creativity and the degree of cooperation within the group. Other challenges are intended to challenge an individual's sense of balance, agility, trust, perseverance, and leadership. In addition, adventure programs which involve games, initiatives, and portable elements may be delivered to a group at community locations. All activities are facilitated by professionally trained staff that utilize special skills and techniques to make the experience safe, meaningful, and exciting.

The Pine Lake Challenge Course was created as a result of community development efforts of the Bristol Community Leadership Team involving schools, youth service bureaus, youth recreational organizations, and public and private non-profit agencies. Construction was made possible through funding received from the Connecticut State Department of Education and donations from businesses and citizens. The primary applications of PLCC programs are to enrich educational and youth service programs and to enhance community collaborations and professional growth. Programs are delivered at the Pine Lake Challenge Course or at schools and community locations.

The Pine Lake Challenge Course & Adventure Program is self-sustaining through revenues generated by user fees.

Performance Measures

Quantitative:

	Service Days		Unduplicated Groups		Total Participants	
	FY 07-08	FY 08-09	FY 07-08	FY 08-09	FY 07-08	FY 08-09
PINE LAKE CHALLENGE COURSE & ADVENTURE PROGRAM	97	143	58	112	3,563	6,259

**Program Summaries-
Special Revenue Funds**

Special Revenue Funds – Pine Lake (continued)

Expenditure and Position Summary

	2008 Actual	2009 Estimated	2010 Budget
Salary /Hourly Wage Expenditures	\$143,649	\$149,600	\$151,500
Part-Time Positions	7 – 25 Seasonal	7- 25 Seasonal	7 – 50 Seasonal

Budget Highlights

1321032 PINE LAKE CHALLENGE COURSE REVENUE

OBJECT	PROJECT	DESCRIPTION	PRIOR YEAR ACTUAL 2007-2008	ORIGINAL BUDGET 2008-2009	REVISED BUDGET 2008-2009	BUDGET REQUEST 2009-2010	BOF APPROVED 2009-2010
LICENSE, PERMITS, FEES							
422004		CHALLENGE COURSE FEES	\$174,095	\$184,850	\$184,850	\$187,350	\$187,350
TOTAL LICENSE, PERMITS, FEES			\$174,095	\$184,850	\$184,850	\$187,350	\$187,350
INVESTMENT EARNINGS							
460000		INTEREST INCOME	\$4,193	\$2,500	\$2,500	\$0	\$0
TOTAL INVESTMENT EARNINGS			\$4,193	\$2,500	\$2,500	\$0	\$0
TOTAL PINE LAKE CHALLENGE COURSE			\$178,288	\$187,350	\$187,350	\$187,350	\$187,350

1321032 PINE LAKE CHALLENGE COURSE EXPENDITURES

OBJECT	PROJECT	DESCRIPTION	PRIOR YEAR ACTUAL 2007-2008	ORIGINAL BUDGET 2008-2009	REVISED BUDGET 2008-2009	BUDGET REQUEST 2009-2010	JOINT BOARD 2009-2010
SALARIES							
515200		PART TIME	\$740	\$0	\$0	\$0	\$0
515300		SEASONAL WAGES	142,909	149,600	149,600	151,500	151,500
TOTAL SALARIES			\$143,649	\$149,600	\$149,600	\$151,500	\$151,500
CONTRACTUAL SERVICES							
531000		PROFESSIONAL FEES AND SERVICES	\$18,992	\$22,000	\$22,000	\$22,000	\$22,000
543200		EQUIPMENT MAINTENANCE CONTRACTS	3,079	3,000	3,000	3,900	3,900
553000		TELEPHONE	678	1,000	1,000	700	700
553100		POSTAGE	322	450	450	500	500
555000		PRINTING AND BINDING	195	750	750	200	200
581135		SCHOOLING AND EDUCATION	745	2,000	2,000	1,000	1,000
TOTAL CONTRACTUAL SERVICES			\$24,011	\$29,200	\$29,200	\$28,300	\$28,300
SUPPLIES AND MATERIALS							
561400		MAINTENANCE SUPPLIES AND MATERIALS	\$1,113	\$1,200	\$1,200	\$1,200	\$1,200
561800		PROGRAM SUPPLIES	4,485	7,000	7,000	6,000	6,000
569000		OFFICE SUPPLIES	350	350	350	350	350
TOTAL SUPPLIES AND MATERIALS			\$5,948	\$8,550	\$8,550	\$7,550	\$7,550
PINE LAKE CHALLENGE COURSE TOTAL			\$173,608	\$187,350	\$187,350	\$187,350	\$187,350

LOCIP PROJECTS FUND

Service Narrative

The LoCIP Projects Fund accounts for the activities of all the Local Capital Improvement Projects approved by the State of Connecticut's Office of Policy and Management. This revenue source is budgeted when the Capital Budget is approved. The approved 2010 budget for LoCIP Projects totals \$413,000 which can be viewed behind the "Capital Budget Summary" tab, in the Program Profiles section.

Budget Highlights

1341018 LOCIP PROJECTS FUND- REVENUE

OBJECT	PROJECT	DESCRIPTION	PRIOR YEAR ACTUAL 2007-2008	ORIGINAL BUDGET 2008-2009	REVISED BUDGET 2008-2009	BUDGET REQUEST 2009-2010	JOINT BOARD 2009-2010
STATE GRANTS							
432033		STATE OF CONNECTICUT OPM	\$572,180	\$495,000	\$495,000	\$413,000	\$413,000
TOTAL STATE GRANTS			\$572,180	\$495,000	\$495,000	\$413,000	\$413,000
TOTAL LOCIP PROJECTS FUND			\$572,180	\$495,000	\$495,000	\$413,000	\$413,000

134 LOCIP PROJECTS FUND

OBJECT	PROJECT	DESCRIPTION	PRIOR YEAR ACTUAL 2007-2008	ORIGINAL BUDGET 2008-2009	REVISED BUDGET 2008-2009	BUDGET REQUEST 2009-2010	JOINT BOARD 2009-2010
OPERATING TRANSFERS OUT							
570000		LOCIP EXPENDITURES	\$482,756	\$495,000	\$495,000	\$413,000	\$413,000
TOTAL OPERATING TRANSFERS OUT			\$482,756	\$495,000	\$495,000	\$413,000	\$413,000
TOTAL LOCIP PROJECTS FUND			\$482,756	\$495,000	\$495,000	\$413,000	\$413,000

