

## **BOARD OF EDUCATION**

Philip Streifer, Phd. Superintendent of Schools  
129 Church Street  
Main Number: (860) 584-7000



### **Mission Statement**

To maintain a safe and secure learning environment that provides all students with the necessary knowledge and skills to successfully complete college, other post high school education or training.

### **Service Narrative**

The Bristol Public School system provides educational services ranging from pre-school programs through adult education programs. Within the system, there are ten elementary schools, which accommodate grades kindergarten through five; three middle schools, which provide programs for grades six, seven and eight; and two high schools, which are comprehensive high schools for grades nine through twelve.

In addition to these schools, alternative education programs are provided at the Bristol Community Senior Center. Bristol maintains an extensive special education program with a variety of services provided for handicapped and learning disabled students from pre-school to age twenty-one. Bristol's program for gifted and talented children includes special programs and resource services for students identified as gifted or talented in grades three through twelve. The academic program is complemented by a wide variety of extracurricular activities, including intramural and interscholastic sports, instrumental and vocal music programs, and many student organizations, which are available to all students.

The community is further served by a parochial school system of four elementary (K-8) schools and one high school. The Bristol Technical Educational Center is open to adults and high school students in grades 11 and 12, and is approved for veterans. Opportunities for post-secondary education in technical, professional and the liberal arts fields abound in the area through both public and private schools. A regional community/technical college is situated one mile over the Bristol border in the town of Farmington and Central Connecticut State University is in nearby New Britain. Branches of the University of Connecticut and State technical colleges are located in both Waterbury and Hartford, twenty minutes away. Also available in the area are nursery schools and day care facilities, as well as Latchkey programs in all of the elementary schools in Bristol.

**Board of Education Summary (continued)**

**Fiscal Year 2009 Major Service Level Accomplishments**

- All quality indicators are up, from the Connecticut Mastery Test to the Connecticut Academic Performance Test, to the SAT to college acceptances. While not every school and grade level has made the same level of progress, overall achievement is either up city-wide or stable at already relatively high levels. These results demonstrate the success of Bristol's improvement plan and its long-term sustainability.
- Progress has been made with the planned new schools; all approvals have been completed and design specifications are proceeding. These schools will provide a catalyst for continued improvement in the district and will replace aging facilities.

**Long Term Goals**

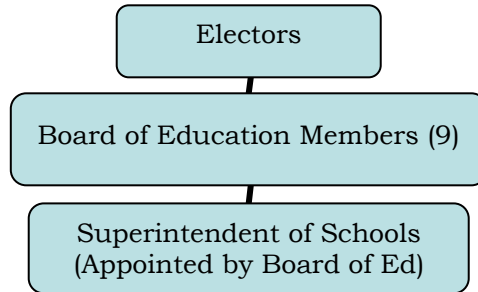
- 90% of students will successfully complete at least one course that carries college credit before graduating.
- 100% of students will be accepted into post-secondary education programs.
- Improve the performance of all students while closing the gap between students eligible for free or reduced lunch and those not eligible by 5%.
- 90% of students will have an attendance rate of 95% or better.
- 50% of students in Grade 6 will meet or exceed the Health standard on all four of the subtests of the CT Physical Fitness Assessment.
- 50% of students in Grade 8 will meet or exceed the Health standard on all four of the subtests of the CT Physical Fitness Assessment.
- Qualitatively:
  - The primary goal is to improve upon the district's accountability and improvement plan to ensure continued success.
  - Continue path focused on high achievement for *all* students.
  - Invest in continued professional development.
  - Maximize opportunities for all students to attend a rigorous four-year college program.
  - Hire the best, brightest and most diverse staff possible.
  - Communicate successes and needs with all City Boards and Community At-Large.

**Program Summaries-  
Education Summary**

---

**Board of Education Summary (continued)**

**Organizational Chart**



**Miscellaneous Information**

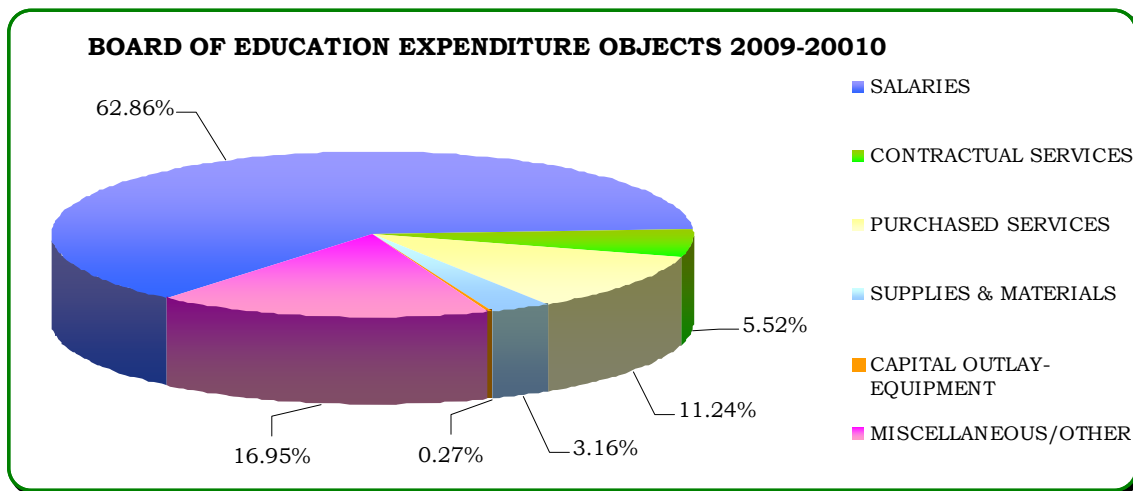
<b>Education:</b>	<b>Number</b>
High schools	2
Middle schools (6 <sup>th</sup> , 7 <sup>th</sup> and 8 <sup>th</sup> )	3
Elementary schools	10
High school students	2,704
Middle school students	2,053
Elementary students	4,066
Special education students	1,130
Teachers	685
Administrative and non-teaching personnel	512
Student enrollment as of 10/1/08	8,870

**Program Summaries-  
Board of Education Summary**

**Board of Education Summary (continued)**

**Budget Summary**

EDUCATION EXPENDITURE OBJECTS	PRIOR YEAR ACTUAL 2007-2008	ORIGINAL BUDGET 2008-2009	REVISED BUDGET 2008-2009	BUDGET REQUEST 2009-2010	JOINT BOARD APPROVED 2009-2010
<b>SALARIES</b>	\$60,006,256	\$64,474,044	\$64,317,620	\$65,160,814	\$64,268,978
<b>CONTRACTUAL SERVICES</b>	5,519,622	5,890,012	6,176,150	6,144,106	5,647,757
<b>PURCHASED SERVICES</b>	10,428,217	9,931,875	9,904,176	12,079,421	11,498,382
<b>SUPPLIES &amp; MATERIALS</b>	4,187,414	4,737,508	4,897,122	3,892,389	3,235,030
<b>CAPITAL OUTLAY- EQUIPMENT</b>	1,027,820	525,307	564,006	419,807	280,815
<b>MISCELLANEOUS/OTHER</b>	2,801,407	15,296,584	3,113,116	16,878,188	17,332,368
<b>TOTALS</b>	<b>\$83,970,736</b>	<b>\$100,855,330</b>	<b>\$88,972,190</b>	<b>\$104,574,725</b>	<b>\$102,263,330</b>



**BOARD OF EDUCATION FULL-TIME EMPLOYEES**

Department	2007-2008	2008-2009	2009-2010
Board of Education	1,155.3	1,170	1,164

	Employees
Bristol Federation of Teachers Local 1464	681
Bristol Association of Principals & Supervisors	36
Bristol Educational Secretaries Association	78
Bristol Municipal Employees Local 2267 Board of Education <i>Custodial, Maintenance &amp; Health Aides and Teacher Aides</i> <i>Local 2267 Council No. 4 (Board of Education Cafeteria)</i>	297
Bristol Association of Crossing Guards	29
Council 4 AFSCME 818 Supervisors	7
Non-Bargaining Employees	36
<b>Total Board of Education Employees</b>	<b>1,164</b>

**Program Summaries-  
Education Summary**

**Board of Education Summary (continued)**

**Performance Measures**

**Quantitative:**

**CAPT 2009 Score Summary Results for Bristol School District, Grade 10**

The table below includes the percent of students who scored at or above the Goal level (Levels 4 and 5) and the percent of students who scored at or above the Proficient level (Levels 3, 4, and 5) for 2008 and 2009. This report includes the results of all Grade 10 students tested in Bristol, including students who moved into the district after October 1, 2008.

	Percentage of Students at or Above Proficient		Percentage of Students at or Above Goal	
	2008	2009	2008	2009
Mathematics	88	90	62	57
Science	89	88	52	51
Reading Across the Disciplines	90	89	50	53
Writing Across the Disciplines	91	87	63	53

**2009 Connecticut Mastery Test (CMT) Score Summary Results for Bristol School District, Grades 3 through 8.**

The table below shows grade level comparisons for the percent of students who scored at or above the Proficient level (Levels 3, 4 and 5) and the percent of students who scored at or above the Goal level (Levels 4 and 5) for the Connecticut Mastery Test (CMT). Percents compared are for different groups of students from 2008 and 2009. This report includes the results of all students tested in Bristol, including students who moved into the district after October 1, 2008. Cells shaded 'green' are where 2009 Bristol results improved over the prior year.

Grade	Mathematics				Reading				Writing			
	% At/Above Proficiency		% At/Above Goal		% At/Above Proficiency		% At/Above Goal		% At/Above Proficiency		% At/Above Goal	
	2009	2008	2009	2008	2009	2008	2009	2008	2009	2008	2009	2008
3	81	84	65	70	72	69	55	52	83	87	62	69
4	89	78	72	60	81	66	67	53	87	80	64	54
5	83	82	65	63	79	74	66	61	82	86	60	61
6	89	86	66	66	80	78	67	65	81	77	54	54
7	91	85	72	60	90	80	80	71	80	77	60	57
8	90	83	62	63	85	80	75	68	81	81	61	59

**Program Summaries-  
Board of Education Summary**

**Board of Education Summary (continued)**

**Budget Highlights**

**CITY OF BRISTOL, CONNECTICUT  
2009-2010  
GENERAL FUND EXPENDITURE SUMMARY FOR EDUCATION**

ORGCODE	DESCRIPTION	PRIOR YEAR	ORIGINAL BUDGET	REVISED BUDGET	BUDGET REQUEST	JOINT
		ACTUAL 2007-2008	2008-2009	2008-2009	2009-2010	BOARD 2009-2010
1100	REGULAR INSTRUCTION	11,677,871	12,845,012	12,845,012	12,284,686	12,044,687
1102	ART	1,431,295	1,572,540	1,572,483	1,612,600	1,599,457
1103	BUSINESS EDUCATION	612,298	631,599	631,599	643,496	640,484
1105	ENGLISH (GRADES 9-12)	4,235,955	4,534,822	4,534,822	4,637,961	4,633,703
1106	WORLD LANGUAGES (GRADES 7-12)	1,293,113	1,346,666	1,346,666	1,437,775	1,342,300
1108	HEALTH/LIFE SKILLS (GRADES 6-12)	623,186	650,896	651,216	700,386	694,718
1109	FAMILY & CONSUMER SCIENCE (6-12)	588,386	610,149	610,549	618,039	615,099
1110	TECHNOLOGY (GRADES 6-12)	1,201,995	1,268,539	1,268,139	1,278,202	1,270,828
1111	MATHEMATICS (GRADES 1-12)	2,831,597	3,222,983	3,221,984	3,207,557	3,199,144
1112	MUSIC (GRADES 1-12)	1,553,779	1,600,210	1,600,173	1,533,691	1,523,118
1113	SCIENCE (GRADES 1-12)	2,717,549	2,913,717	2,915,241	2,916,768	2,906,803
1114	LANGUAGE ARTS/ READING (GRADES 1-8)	551,522	595,019	595,013	927,348	913,243
1115	SOCIAL STUDIES (GRADES 1-12)	2,788,039	2,915,494	2,915,676	2,906,132	2,900,235
1116	PHYSICAL EDUCATION (GRADES K-12)	1,713,182	1,801,737	1,800,717	1,702,335	1,688,145
1117	VOCATIONAL EDUCATION	14,055	0	10,000	0	0
1120	ALTERNATIVE EDUCATION (GRADES 7-11)	335,913	355,946	355,946	314,727	312,068
1121	KINDERGARTEN	1,136,443	1,222,433	1,222,433	1,466,961	1,465,442
1122	PRESCHOOL PROGRAM	355,421	385,104	385,104	399,162	195,398
1200	SPECIAL EDUCATION	8,111,003	8,542,839	8,791,603	8,672,494	8,535,021
1260	E.S.L	455,725	542,916	542,916	558,619	557,119
1270	GIFTED/ TALENTED	95,879	120,722	120,722	119,873	112,427
1300	ADULT CONTINUING EDUCATION	44,749	30,475	30,475	20,566	20,566
1310	ADULT BASIC EDUCATION	257,717	308,581	310,104	293,131	290,175
1400	SUMMER SCHOOL	35,829	64,884	64,884	61,580	61,371
2112	ATTENDANCE SERVICES	41,332	42,607	42,607	42,607	42,547
2113	SOCIAL WORK SERVICES	81,400	84,058	84,058	85,169	85,169
2120	GUIDANCE SERVICES	1,831,637	1,918,286	1,697,625	1,957,673	1,724,079
2122	IN-HOUSE SUSPENSION	19,667	80,000	80,000	80,000	80,000
2130	OTHER HEALTH SERVICES	6,000	6,000	6,000	6,000	4,800
2140	PSYCHOLOGICAL SERVICES	932,939	1,123,190	1,123,190	1,095,994	1,087,994
2150	SPEECH/ HEARING SERVICES	1,333,266	1,494,949	1,491,364	1,493,600	1,388,943
2190	TESTING	1,946	14,625	14,625	26,287	21,030
2210	INSTRUCTIONAL SERVICES/ STAFF DEV.	1,255,741	1,436,577	1,438,216	1,359,244	1,172,636
2221	EDUCATIONAL MEDIA SERVICES	579,805	650,986	651,086	655,680	620,544
2222	LIBRARY SERVICES	1,011,246	1,068,466	1,068,466	1,041,079	1,006,992
2223	AUDIO-VISUAL SERVICES	235,101	186,978	212,000	180,212	163,735
2225	COMPUTER INSTRUCTION SERVICES	1,521,174	1,490,995	1,638,850	1,355,680	1,260,603
2310	BOARD OF EDUCATION SERVICES	153,930	160,156	160,156	179,803	154,603
2317	STAFF RELATIONS/NEGOTIATIONS	7,475	21,000	21,000	21,000	16,800
2320	OFFICE OF THE SUPERINTENDENT	235,401	243,596	241,546	252,960	250,560
2321	ASSISTANT SUPERINTENDENT'S OFFICE	188,924	189,675	189,675	196,550	195,650
2329	PERSONNEL DEPARTMENT	387,353	372,517	372,517	545,309	498,227
2400	OFFICE OF PRINCIPAL SERVICES	4,732,350	4,933,860	4,946,864	5,104,712	5,051,996
2510	FISCAL SERVICES	3,673,263	16,246,411	4,007,436	17,771,521	18,115,570
2610	MAINTENANCE OF PLANT	2,718,766	2,289,213	2,289,624	2,614,196	2,302,256
2620	OPERATION OF BUILDING SERVICES	5,851,321	6,410,703	6,516,898	5,994,898	5,870,995
2700	STUDENT TRANSPORTATION (REIMB.)	4,984,108	4,849,380	4,878,683	5,612,857	5,506,664
2790	OTHER STUDENT TRANSPORTATION	139,311	150,000	150,000	150,000	150,000
2900	OTHER EDUCATIONAL COSTS	1,014,731	1,132,522	1,130,999	1,120,514	1,120,514
2902	PROGRAM/INSTRUCTIONAL IMPROVEMENTS	455,323	400,113	400,113	333,043	266,434
3200	ENTERPRISE OPERATIONS	387,152	393,925	393,857	454,976	461,420
3210	ATHLETICS	1,077,634	1,178,941	1,178,941	1,134,511	1,082,323
6110	TUITION TO CONNECTICUT SCHOOL DISTRICTS	1,248,721	1,368,551	1,361,051	1,645,737	1,585,132
6130	TUITION TO NON-PUBLIC SCHOOLS	3,201,216	2,833,767	2,841,267	3,748,824	3,453,563
<b>TOTAL EDUCATION EXPENDITURES</b>		<b>\$83,970,736</b>	<b>\$100,855,330</b>	<b>\$88,972,189</b>	<b>\$104,574,725</b>	<b>\$102,263,330</b>

**Program Summaries-  
Education Summary**

---

**Board of Education Summary (continued)**

<b><u>SCHOOL FACILITIES</u></b>	
<b>School</b>	<b>Grades</b>
Bristol Central High School	9 - 12
Bristol Eastern High School	9 - 12
Chippens Hill Middle School	6 - 8
Memorial Boulevard School	6 - 8
Northeast School	6 - 8
C.A. Bingham School	K - 5
Edgewood School	K - 5
Ellen Hubbell School	K - 5
Greene- Hills School	K - 5
Ivy Drive School	K - 5
Jennings School	K - 5
Mountain View School	K - 5
O'Connell School	K - 5
South Side School	K - 5
Stafford School	K - 5

**Board of Education Members**

**Expiration of Term**

Barbara Y. Doyle, Chairman	11/2011
Julie M. Luczkow, Vice Chairman	11/2011
Karen Vibert, Secretary	11/2011
Jane E. Anastasio	11/2011
Margaret Bonola	11/2011
Sherry A. Turcotte	11/2011
Thomas P. O'Brien	11/2011
Amy Coan	11/2011
Christopher C. Wilson	11/2011

All Members are elected to a 4 year term.

Council Liaison (not a member) Council Member Minor



**Program Summaries-  
Board of Education Summary**

---

**Board of Education Summary (continued)**

**Bristol Central High School**



**O'Connell Elementary School**



**Ivy Drive Elementary School**



**Mountain View Elementary School**

