

SPECIAL REVENUE FUNDS

Program Summary

Special Revenue Funds are used to account for the proceeds of specific revenue sources (other than expendable trusts or major capital projects) that are legally restricted to expenditures for specified purposes. A summary of the Special Revenue Funds as presented in the budget document behind the "Special Revenue" tab are shown below.

The Special Revenue Funds in the 2007-2008 budget consist of the following:

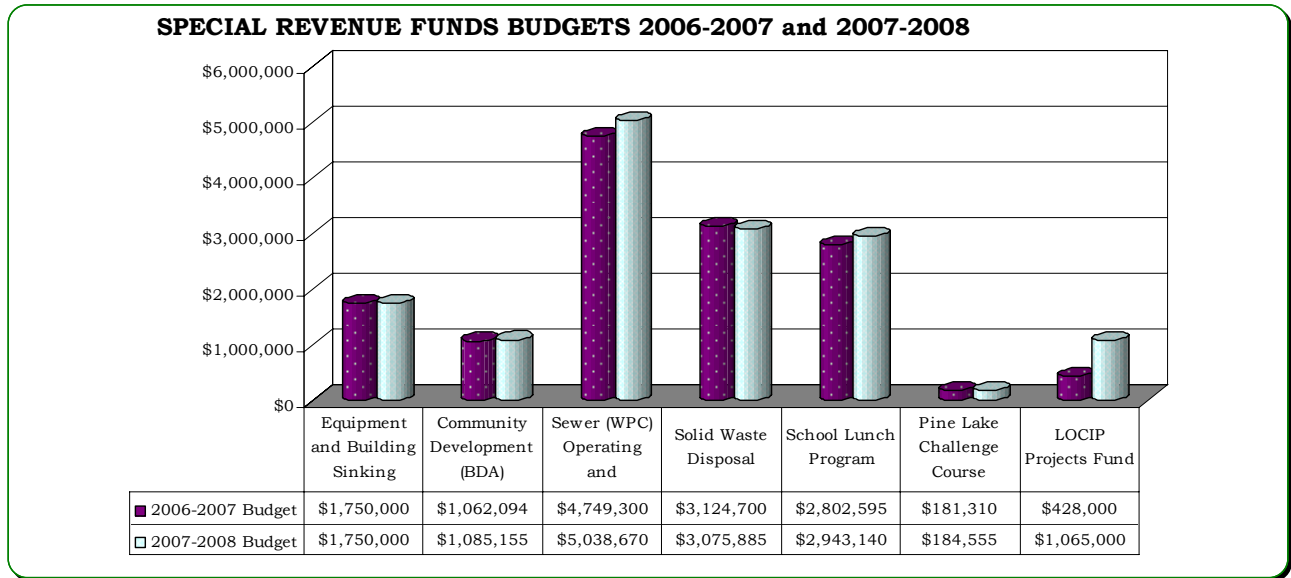
- EQUIPMENT AND BUILDING SINKING
- COMMUNITY DEVELOPMENT ACT- BRISTOL DEVELOPMENT AUTHORITY
- SEWER (WPC) OPERATING AND ASSESSMENT
- SOLID WASTE DISPOSAL
- SCHOOL LUNCH PROGRAM
- PINE LAKE CHALLENGE COURSE
- LOCIP PROJECTS

Shown below is a listing of the special revenue funds' prior year expenditures (2005-2006) as well as budgets for fiscal year 2006-2007 and fiscal year 2007-2008.

Special Revenue Funds Budgets and Expenditures			
	<u>2005-2006</u>	<u>2006-2007</u>	<u>2007-2008</u>
	<u>Actual</u>	<u>Budget</u>	<u>Budget</u>
Equipment and Building Sinking	\$1,989,023	\$1,750,000	\$1,750,000
Community Development (BDA)	1,010,471	1,062,094	1,085,155
Sewer (WPC) Operating and Assessment	4,219,149	4,749,300	5,038,670
Solid Waste Disposal	3,081,820	3,124,700	3,075,885
School Lunch	2,951,763	2,802,595	2,943,140
Pine Lake Challenge Course	161,826	181,310	184,555
LOCIP Projects Fund	1,239,137	428,000	1,065,000
Total Special Revenue Funds	<u>\$14,653,189</u>	<u>\$14,097,999</u>	<u>\$15,142,405</u>

**Program Summaries-
Special Revenue Funds**

Special Revenue Funds (continued)



EQUIPMENT AND BUILDING SINKING FUND

Service Narrative

The Equipment and Building Sinking Fund is utilized to set aside funds for major pieces of equipment and funds for building purchases or building upgrades that the City may decide to pursue. It is primarily funded by transfers from the General Fund. A healthy balance of approximately \$700,000 is still available within this fund.

Budget Highlights

1018108 EQUIPMENT AND BUILDING SINKING FUND

OBJECT	PROJECT	DESCRIPTION	PRIOR YEAR ACTUAL 2005-2006	ORIGINAL BUDGET 2006-2007	REVISED BUDGET 2006-2007	BUDGET REQUEST 2007-2008	JOINT BOARD APPROVED 2007-2008
OPERATING TRANSFERS OUT							
591001		TRANSFER TO GENERAL FUND	\$1,989,023	\$1,750,000	\$1,750,000	\$1,750,000	\$1,750,000
TOTAL OPERATING TRANSFERS OUT			\$1,989,023	\$1,750,000	\$1,750,000	\$1,750,000	\$1,750,000
TOTAL EQUIPMENT AND BUILDING SINKING FUND			\$1,989,023	\$1,750,000	\$1,750,000	\$1,750,000	\$1,750,000

BRISTOL DEVELOPMENT AUTHORITY

Jonathan Rosenthal, Director
Office: (860) 584-6185
jonathanrosenthal@ci.bristol.ct.us

Service Narrative

The Office of the Bristol Development Authority is responsible for Economic and Community Development in the City of Bristol. The department is also responsible for writing major grants, is the successor agency to the Redevelopment Agency and performs major lobbying functions at the state legislature and with the Connecticut Conference of Municipalities (CCM). The department is governed in part by the Mayor and also by the nine-member, bi-partisan Board of the Development Authority. The Board has full responsibility for the Community Development (CDBG funded) programs, reviewing the Neighborhood Assistance Act, and for redevelopment activities which include the industrial park programs and downtown revitalization. Other economic development activities, lobbying, and grants fall under the direct review of the Mayor.

There are seven staff persons. The director and the two grants positions are funded directly by the City, while four others; a Community Development Coordinator, two program positions, and the departmental secretary are funded 93% through Federal Community Development Block Grant (CDBG) funds. Due to administrative spending caps by the federal government, a portion of those salaries had to be borne by the City.

For more than a decade, economic development efforts have concentrated upon attracting, retaining and growing industrial and office users for the City. This strategy has clearly helped to grow the commercial/industrial tax base. This strategy has also meant bringing new, ready-to-build industrial land to the market. The creation of a new industrial park has been a decade in the making. Approximately 50 acres are poised for new industrial users as the Southeast Bristol Business Park.

Downtown redevelopment is a long-term challenge and has re-emerged as a priority. As much a quality of life issue as an economic development one, downtown promises to be a decade long and continuing effort to improve the physical environment, attract new businesses (both retail and office) and establish a new sense of purpose to the center of the City and hub of government for Connecticut's 11th largest municipality. One change is the creation of a temporary private corporation by the Mayor and City Council which will give authority for the 17-acre mall site to a private, non-profit entity.

Fiscal Year 2007 Major Service Level Accomplishments

- The overall economy was slow from late 2000 into 2005. The State of Connecticut has lost 100,000 manufacturing jobs since 1990 and continues to be the slowest state in the union garnering new jobs. Despite a slow recovery from a national economic slow-down and fierce competition from China, the Bristol economy has held its own and shown modest employment growth in some sectors. Countering this, ESPN's physical plant continues to grow following a \$3.5 million city/federal/state investment in infrastructure with two new buildings on the eastern edge of their campus. Their \$500 million digital center is complete, a second one is contemplated and growth now lines two sides of Birch Street as ESPN continues its long term plans for development. These plans include the closing of a portion of Birch Street in order to form a contiguous campus. Taking advantage of a new traffic light to be placed at Battisto Road and the new Business Park, ESPN is continuing to expand some of its facilities at 383 Middle Street.

Special Revenue Funds – Bristol Development Authority (continued)

- There are new businesses and expansions in the City. Clark Steel Framing Systems is upgrading 250,000 square feet in the Bristol business center (formerly GM) on James P. Casey road on Chippens Hill. This manufacturing company will increase employment in Bristol's manufacturing base. There has also been substantial interest in leasing the remaining space in the Bristol Business Center.
- It is no exaggeration to say that Bristol needs infrastructure-ready industrial land in order to grow its industrial tax base. There are few “shovel ready” sites available at this writing. The need for new industrial development space can only be met for the next few years by the availability of this land. Construction is underway for the Southeast Bristol Business Park. The Southeast Bristol Business Park is a 51+ acre parcel of industrial/office land. The city will be using a \$1.2 million federal grant and a \$75,000 state grant to assist with building infrastructure. Since 1980, most of the city's significant job and tax base growth in Bristol has occurred in the industrial parks controlled by the City including Middle Street, 229 Technology Park, and the Halcyon Industrial Park. The park will add to that mix.
- The economic development grants, funded from State revenue sharing of Pequot gaming revenues, have been one of the most effective marketing tools that Bristol has. These unique grants have distinguished the City from other locations and help foster a business-friendly reputation that is well-earned.
- The most visible element of downtown redevelopment has been the North Main Streetscape which is now complete from Route 6 to Center Street. It provides for pedestrian amenities including crosswalks, new lighting, traffic circulation improvements, street plantings and façade improvements. The project will be extended to Main Street excluding the former mall site. Resolution of that issue should allow both areas to be linked.
- The office has spent considerable effort to secure funding for the completion of State Route 72. Conversion from a two-lane arterial to a connector route with four or more lanes will improve east-west access to the City and provide a direct and convenient route to downtown. This highway improvement is critically important to downtown redevelopment. This project was funded in the spring of 2007 and is expected to go to bid in the fall of 2007.

Fiscal Year 2008 Major Service Level Goals

- The need for downtown revitalization transcends economic values to reach quality of life and quality of community values. It is important to attract and retain taxpaying families and good businesses. But the economic benefit is still clear – if downtown's image is improved, new quality tenants can be recruited to fill vacancies with stable, market rent paying occupants. Generation of increased rents will result in higher tax revenues and better retail choices for residents. Recent retail sales estimates suggest that Bristol residents spend more than \$100 million outside the City.
- The City's purchase of the 17 acre "Bristol Centre Mall" provides a clear opportunity to address the increasing vacancy and under-performing nature of that key center city property. By owning the site the City can effectively market the property and negotiate with private end-users and developers. The history of significantly below market rents (approximately 25%) can breed a cycle of decline where rents cannot sustain repairs

Program Summaries- Special Revenue Funds

Special Revenue Funds – Bristol Development Authority (continued)

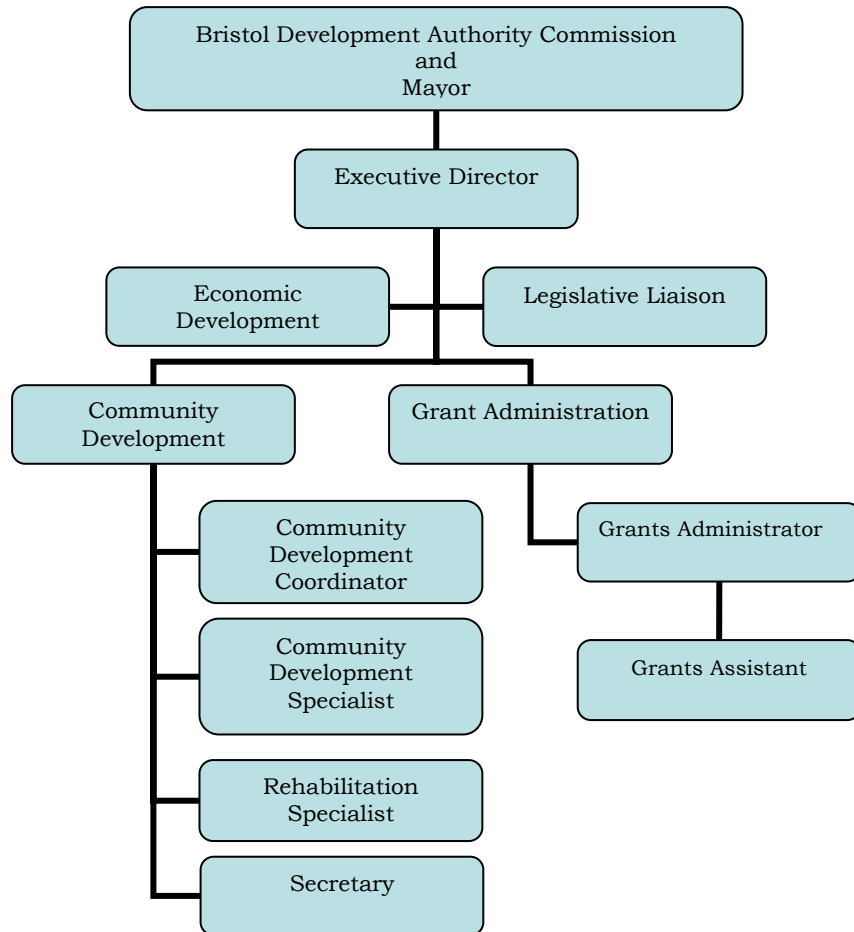
- and renovations. The new four-year assessment cycle improves the city's ability to capitalize on increasing rental income. (Note: this property was temporarily assigned to another entity.)
- Securing additional portions of a \$45 million grant promised by the State of Connecticut in 2006-2007 for downtown rehabilitation is an attractive opportunity. \$3.0 million has already been authorized for feasibility studies and preliminary design. No project significantly funded by the state may proceed without completion of a series of studies including an environmental impact assessment (the CEPA process). Full funding will need to be secured in a multiyear process.
 - Growing and diversifying the Real and Personal Property Grand List continues to be important for Bristol's financial future. Bringing new industrial property on-line in 2007 is critical to that effort. As space for industrial and commercial development becomes scarcer, improving the existing environment will become the major way for increasing the non-residential tax base. These economic efforts have yielded a better credit rating in the last five years.
 - The Housing Rehabilitation Program funded by the Community Development Block Grant (CDBG) assists low-income residents with maintaining their primary residences and helps to preserve neighborhoods. Program guidelines emphasize owner occupied housing but do allow some multifamily downtown housing to receive financial incentives. A \$400,000 State Housing Trust Fund Program grant received this year will provide additional funds to expand this program. Recent increases in residential utility costs and enforcement of City codes have increased the need for rehabilitation grant assistance to those homeowners whose income is below 80% of the area median income.



ESPN DIGITAL CENTER

Special Revenue Funds – Bristol Development Authority (continued)

Organizational Chart



**Program Summaries-
Special Revenue Funds**

Special Revenue Funds- Bristol Development Authority (continued)

Budget Highlights

104 BRISTOL DEVELOPMENT AUTHORITY REVENUE

OBJECT	PROJECT	DESCRIPTION	PRIOR YEAR ACTUAL 2005-2006	ORIGINAL BUDGET 2006-2007	REVISED BUDGET 2006-2007	BUDGET REQUEST 2007-2008	JOINT BOARD APPROVED 2007-2008
1044101 BDA- CITYSHARE							
490001	G2008	TRANSFER IN GENERAL FUND	\$253,711	\$321,460	\$343,044	\$384,606	\$384,605
TOTAL BDA- CITYSHARE			\$253,711	\$321,460	\$343,044	\$384,606	\$384,605
1044103 BDA- CDBG- ADMINISTRATION							
431025	G2008	CDBG ENTITLEMENT	\$716,293	\$614,678	\$614,678	\$614,644	\$614,645
431083	G2008	REPROGRAMMING FUNDS CDBG	0	99,701	99,701	44,510	44,510
431084	G2008	PROGRAM INCOME	40,467	26,255	26,255	41,395	41,395
TOTAL BDA- CDBG- ADMINISTRATION			\$756,760	\$740,634	\$740,634	\$700,549	\$700,550
TOTAL BRISTOL DEVELOPMENT AUTHORITY			\$1,010,471	\$1,062,094	\$1,083,678	\$1,085,155	\$1,085,155

1044101 BDA- CITYSHARE

OBJECT	PROJECT	DESCRIPTION	PRIOR YEAR ACTUAL 2005-2006	ORIGINAL BUDGET 2006-2007	REVISED BUDGET 2006-2007	BUDGET REQUEST 2006-2007	JOINT BOARD APPROVED 2007-2008
SALARIES							
514000	G2008	REGULAR WAGES	\$169,191	\$210,880	\$226,559	\$241,287	\$241,285
515100	G2008	OVERTIME WAGES	3,778	11,840	5,840	13,841	13,840
517000	G2008	OTHER WAGES	3,695	2,000	2,000	3,695	3,695
TOTAL SALARIES			\$176,664	\$224,720	\$234,399	\$258,823	\$258,820
CONTRACTUAL SERVICES							
531000	G2008	PROFESSIONAL FEES AND SERVICES	\$7,794	\$5,000	\$11,000	\$8,500	\$8,500
543000	G2008	REPAIRS AND MAINTENANCE	0	500	500	675	675
553000	G2008	TELEPHONE	1,252	1,800	1,800	1,800	1,800
553100	G2008	POSTAGE	929	890	890	1,000	1,000
554000	G2008	TRAVEL REIMBURSEMENT	1,172	1,800	1,800	1,442	1,440
555000	G2008	PRINTING AND BINDING	262	650	650	1,339	1,340
557700	G2008	ADVERTISING	10,938	11,000	11,000	11,330	11,330
581120	G2008	CONFERENCES AND MEMBERSHIPS	2,909	4,525	6,025	4,797	4,795
581260	G2008	MISCELLANEOUS PROMOTIONS	1,605	1,650	1,650	1,700	1,700
581270	G2008	TRADE SHOWS	1,540	1,500	0	1,500	1,500
581271	G2008	CENTRAL CT REGIONAL MARKETING	160	0	0	0	0
587467	G2008	DOWNTOWN REVITALIZATION ACTIVITIES	6,063	5,000	5,000	10,000	10,000
TOTAL CONTRACTUAL SERVICES			\$34,624	\$34,315	\$40,315	\$44,083	\$44,080
BENEFITS							
520000	G2008	EMPLOYEE BENEFITS	\$1,154	\$1,292	\$1,292	\$1,489	\$1,490
520700	G2008	F.I.C.A	10,084	12,755	12,755	16,047	16,050
520750	G2008	MEDICARE INSURANCE	2,358	3,030	3,030	3,753	3,750
TOTAL BENEFITS			\$13,596	\$17,077	\$17,077	\$21,289	\$21,290
SUPPLIES AND MATERIALS							
561800	G2008	PROGRAM SUPPLIES	\$2,410	\$5,000	\$5,000	\$2,575	\$2,575
570400	G2008	FURNITURE REPLACEMENT	0	0	0	2,200	2,200
TOTAL SUPPLIES AND MATERIALS			\$2,410	\$5,000	\$5,000	\$4,775	\$4,775
OPERATING TRANSFERS OUT							
591500	G2008	TRANSFER TO INTERNAL SERVICE	\$24,606	\$40,348	\$46,253	\$55,636	\$55,640
TOTAL OPERATING TRANSFERS OUT			\$24,606	\$40,348	\$46,253	\$55,636	\$55,640
TOTAL BDA- CITYSHARE			\$251,900	\$321,460	\$343,044	\$384,606	\$384,605

**Program Summaries-
Special Revenue Funds**

Special Revenue Funds- Bristol Development Authority (continued)

1044102 BDA- REHABILITATION PRESERVATION			PRIOR YEAR ACTUAL 2005-2006	ORIGINAL BUDGET 2006-2007	REVISED BUDGET 2006-2007	BUDGET REQUEST 2007-2008	JOINT BOARD APPROVED 2007-2008
OBJECT	PROJECT	DESCRIPTION					
SALARIES							
514000	G2008	REGULAR WAGES	\$97,333	\$95,173	\$95,173	\$93,031	\$93,030
515100	G2008	OVERTIME- BDA REHAB	0	1,000	1,000	500	500
517000	G2008	OTHER WAGES	1,000	1,000	1,000	1,000	1,000
TOTAL SALARIES			\$98,333	\$97,173	\$97,173	\$94,531	\$94,530
BENEFITS							
520000	G2008	EMPLOYEE BENEFITS	\$21,827	\$7,319	\$7,319	\$25,097	\$25,100
520700	G2008	F.I.C.A.	6,542	6,469	6,469	6,542	6,540
520750	G2008	MEDICARE INSURANCE	1,530	1,513	1,513	1,530	1,530
TOTAL BENEFITS			\$29,899	\$15,301	\$15,301	\$33,169	\$33,170
OTHER/MISCELLANEOUS							
587100	G2008	RESIDENTIAL REHABILITATION	\$264,868	\$298,321	\$298,321	\$175,146	\$175,145
589000	G2008	CONTINGENCY	0	17,684	17,684	0	0
TOTAL OTHER/MISCELLANEOUS			\$264,868	\$316,005	\$316,005	\$175,146	\$175,145
TOTAL BDA- REHABILITATION			\$393,100	\$428,479	\$428,479	\$302,846	\$302,845
1044103 BDA- CDBG- ADMINISTRATION							
OBJECT	PROJECT	DESCRIPTION	PRIOR YEAR ACTUAL 2005-2006	ORIGINAL BUDGET 2006-2007	REVISED BUDGET 2006-2007	BUDGET REQUEST 2007-2008	JOINT BOARD APPROVED 2007-2008
SALARIES							
514000	G2008	REGULAR WAGES	\$73,934	\$84,512	\$84,512	\$54,792	\$54,790
515100	G2008	OVERTIME	449	2,000	2,000	0	0
517000	G2008	OTHER WAGES	0	0	0	0	0
TOTAL SALARIES			\$74,383	\$86,512	\$86,512	\$54,792	\$54,790
CONTRACTUAL SERVICES							
522000	G2008	LOCAL 233 YEARLY ALLOWANCE	\$500	\$500	\$500	\$500	\$500
531000	G2008	PROFESSIONAL FEES AND SERVICES	0	500	500	206	205
544400	G2008	RENTS AND LEASES	181	200	200	2,500	2,500
553000	G2008	TELEPHONE	0	500	500	500	500
553100	G2008	POSTAGE	392	700	700	420	420
554000	G2008	TRAVEL REIMBURSEMENT	793	2,000	2,000	2,025	2,025
555000	G2008	PRINTING AND BINDING	0	150	150	150	150
557700	G2008	ADVERTISING	2,448	3,000	3,000	2,575	2,575
581120	G2008	CONFERENCE AND MEMBERSHIPS	147	1,500	1,500	1,485	1,485
TOTAL CONTRACTUAL SERVICES			\$4,461	\$9,050	\$9,050	\$10,361	\$10,360
BENEFITS							
520000	G2008	EMPLOYEE BENEFITS	\$265	\$329	\$329	\$208	\$210
520700	G2008	F.I.C.A.	4,991	0	0	4,991	4,990
520750	G2008	MEDICARE INSURANCE	1,167	0	0	1,167	1,170
TOTAL BENEFITS			\$6,423	\$329	\$329	\$6,366	\$6,370
SUPPLIES AND MATERIALS							
561800	G2008	PROGRAM SUPPLIES	\$997	\$1,000	\$1,000	\$2,060	\$2,060
569000	G2008	OFFICE SUPPLIES	1,067	1,200	1,200	1,545	1,545
TOTAL SUPPLIES AND MATERIALS			\$2,064	\$2,200	\$2,200	\$3,605	\$3,605
MISCELLANEOUS							
589000	G2008	CONTINGENCY	\$0	\$500	\$500	\$500	\$500
587902	G2008	FAIR HOUSING	0	23,518	23,518	500	500
TOTAL MISCELLANEOUS			\$0	\$24,018	\$24,018	\$1,000	\$1,000
OPERATING TRANSFERS OUT							
591500	G2008	TRANSFER TO INTERNAL SERVICE	\$12,726	\$6,079	\$6,079	\$13,876	\$13,875
TOTAL OPERATING TRANSFERS OUT			\$12,726	\$6,079	\$6,079	\$13,876	\$13,875
TOTAL BDA- CDBG- ADMINISTRATION			\$100,057	\$128,188	\$128,188	\$90,000	\$90,000

**Program Summaries-
Special Revenue Funds**

Special Revenue Funds- Bristol Development Authority (continued)

1044104 BDA- PUBLIC SERVICE GRANTS			PRIOR YEAR ACTUAL 2005-2006	ORIGINAL BUDGET 2006-2007	REVISED BUDGET 2006-2007	BUDGET REQUEST 2007-2008	JOINT BOARD APPROVED 2007-2008
OBJECT	PROJECT	DESCRIPTION					
MISCELLANEOUS							
585011	G2008	ST. VINCENT DEPAUL	\$17,391	\$17,000	\$17,000	\$20,000	\$20,000
585013	G2008	PRUDENCE CRANDALL	7,000	9,000	9,000	9,000	9,000
585014	G2008	YWCA- SEXUAL ASSAULT	3,500	5,000	5,000	3,152	3,152
585016	G2008	BRISTOL BOYS/GIRLS CLUB OUTREACH	6,500	13,000	13,000	30,000	30,000
585018	G2008	BIG BROTHERS/ BIG SISTERS	0	2,000	2,000	0	0
585023	G2008	FAMILY CENTER- SUMMER	1,838	4,000	4,000	1,500	1,500
585049	G2008	ELDERLY OUTREACH- CATHOLIC CHAR.	3,500	4,000	4,000	4,000	4,000
585055	G2008	ELC- SUMMER EDUC. CAMPERSHIPS	4,000	4,000	4,000	0	0
585061	G2008	YWCA PREVENTION EDUCATION	1,500	3,500	3,500	0	0
585080	G2008	EXTENDED CARE SUBSIDIARY	10,000	0	0	0	0
585089	G2008	BRISTOL BOYS/ GIRLS CLUB SUMMER	0	6,000	6,000	5,000	5,000
585099	G2008	BRISTOL BOYS/GIRLS CLUB EXTENDED CARE	18,338	4,000	4,000	0	0
585104	G2008	SOUP KITCHEN	5,000	7,000	7,000	13,239	13,239
585394	G2008	FAMILY CENTER CHILD CARE SUBSIDY	6,112	0	0	0	0
585600	G2008	BBE- INTERVENTION PROGRAM	1,500	1,000	1,000	0	0
585601	G2008	BCO- BEYOND SHELTER	7,000	0	0	0	0
585602	G2008	NUTMEG MONITORING	1,500	0	0	2,000	2,000
587111	G2008	LITERACY VOLUNTEERS	1,800	2,840	2,840	3,500	3,500
587222	G2008	BCO HOMEOWNERSHIP	0	10,000	10,000	0	0
587323	G2008	COMMUNITY COUNSELING OF CENTRAL CT	0	0	0	2,000	2,000
587324	G2008	ENVIRONMENTAL LEARNING SUMMER CAMP	0	0	0	3,000	3,000
TOTAL MISCELLANEOUS			\$96,479	\$92,340	\$92,340	\$96,391	\$96,391
TOTAL BDA- PUBLIC SERVICE GRANTS			\$96,479	\$92,340	\$92,340	\$96,391	\$96,391

1044105 BDA- CDBG PROJECTS			PRIOR YEAR ACTUAL 2005-2006	ORIGINAL BUDGET 2006-2007	REVISED BUDGET 2006-2007	BUDGET REQUEST 2007-2008	JOINT BOARD APPROVED 2007-2008
OBJECT	PROJECT	DESCRIPTION					
MISCELLANEOUS							
585084	G2008	UNITED WAY WEST CENTRAL CT- NEED	\$50,000	\$0	\$0	\$0	\$0
587002	G2008	BARC FAN	0	5,000	5,000	0	0
587004	G2008	FAMILY CENTER WINDOW REPLACEMENT	0	20,000	20,000	0	0
587006	G2008	BRISTOL HOUSING PLAYGROUND	0	10,000	10,000	0	0
587008	G2008	BRISTOL HOUSING HOMEOWNERSHIP	0	5,000	5,000	0	0
587051	G2008	CW RESOURCES HANDICAPP RAMP	980	20,893	20,893	0	0
587052	G2008	MEALS FOR NEEDY- RENOVATION	5,545	0	0	0	0
587110	G2008	COMMERCIAL REHABILITATION	28,784	30,734	30,734	0	0
587281	G2008	BARC- ADA ACCESSIBILITY	0	0	0	20,000	20,000
587301	G2008	FAMILY CENTER- FACILITY	0	0	0	37,400	37,400
587303	G2008	BRISTOL/BURLINGTON DENTAL CHAIR	7,000	0	0	0	0
587305	G2008	BRISTOL HISTORICAL SOCIETY ROOF REPAIR	0	0	0	10,000	10,000
587306	G2008	BRISTOL HOUSING- WINDOWS- KOMANETSKY	0	0	0	50,000	50,000
587307	G2008	BRISTOL HOUSING CAMBRIDGE PARK PLAYGROUND	0	0	0	5,000	5,000
TOTAL MISCELLANEOUS			\$92,309	\$91,627	\$91,627	\$122,400	\$122,400
TOTAL BDA- CDBG PROJECTS			\$92,309	\$91,627	\$91,627	\$122,400	\$122,400

**Program Summaries-
Special Revenue Funds**

Special Revenue Funds- Bristol Development Authority (continued)

Bristol Development Authority Board

Mayor William T. Stortz, Chairman
Howard T. Schmelder, Vice-Chairman
Craig Minor, Councilman, Liason
John S. Driscoll (Jack)
Jonathan Rosenthal, Exec. Director, BDA

Mike Rivers
Mickey Goldwasser
Donald Cassin
Mae Palmisano
John LaFreniere

BDA Committees

Policy Committee

H. Schmelder (CH) Mayor Stortz
Palmisano D. Cassin

Industrial Development Committee

M. Rivers (CH) C. Minor
M. Goldwasser D. Cassin

Neighborhood Preservation Committee

M. Palmisano (CH) D. Cassin
C. Minor J. LaFreniere

Downtown Committee

Mayor Stortz (CH) M. Goldwasser
M. Rivers J. Driscoll

Budget & Personnel Committee

J. Driscoll (CH) Mayor Stortz
H. Schmelder M. Rivers

SEWER OPERATING & ASSESSMENT FUND

Brian Fowkes, Manager
Office: (860) 584-3824
brianfowkes@ci.bristol.ct.us

Service Narrative

The Water Pollution Control Division of the Public Works Department is accounted for in the Sewer Operating and Assessment Fund and is charged with the operation and maintenance of the City's Wastewater collection and treatment facilities. The Division provides sanitary sewer collection and treatment services to approximately 90% of the City's populated area. The Division operates and maintains an advanced wastewater reclamation plant with 10.75 MGD capacity, 15 pumping stations, 236 miles of sewer lines and 5,650 manholes. The Division also provides administrative services for the operation, oversees sewer usage billing performed by the City's Water Department and develops long term planning to assure the operation will meet the future needs of the Community. In accordance with State and Federal regulations the Division is required to maintain a Capital Reserve Fund adequately funded to meet the financial demands of all Facility upgrades, modifications and capital equipment replacement.

Fiscal Year 2007 Major Service Level Accomplishments

- The Division began a major field investigation of the sanitary sewer collection system in sewer shed leading to the Broad Street pumping station. The program will identify sources of clean water entering the sanitary system. The identified areas will be prioritized and rehabilitated under future construction projects.
- The Division initiated a study to conduct a full electromechanical evaluation of the Broad Street pump station, the City's largest pumping station, and modify the 18 year old station to provide greater dependability and increase the station capacity to accommodate future peak flow conditions.
- Completion of infrastructure upgrades at the treatment facility to improve the aeration system and improve energy efficiency.
- Completed upgrades to the Plant Headworks, including installation of new screening and processing units.

Fiscal Year 2008 Major Service Level Goals

- Continue current implementation of infrastructure upgrades and replacements of process equipment including expansion of the Plant Alarm and Automation systems.
- Evaluate Consultant recommendations for the upgrade of the Broad Street Pumping Station and initiate the design and development of plans and specifications.
- Continue oversight of the collection system evaluation and proceed with the development of prioritized rehabilitation program.
- Design and install an auxiliary plant pumping station to supplement the existing pumps. The upgrade will provide greater dependability and increased flow handling capacity.

**Program Summaries-
Special Revenue Funds**

Special Revenue Funds- Sewer Operating Assessment Fund (continued)

Performance Measures

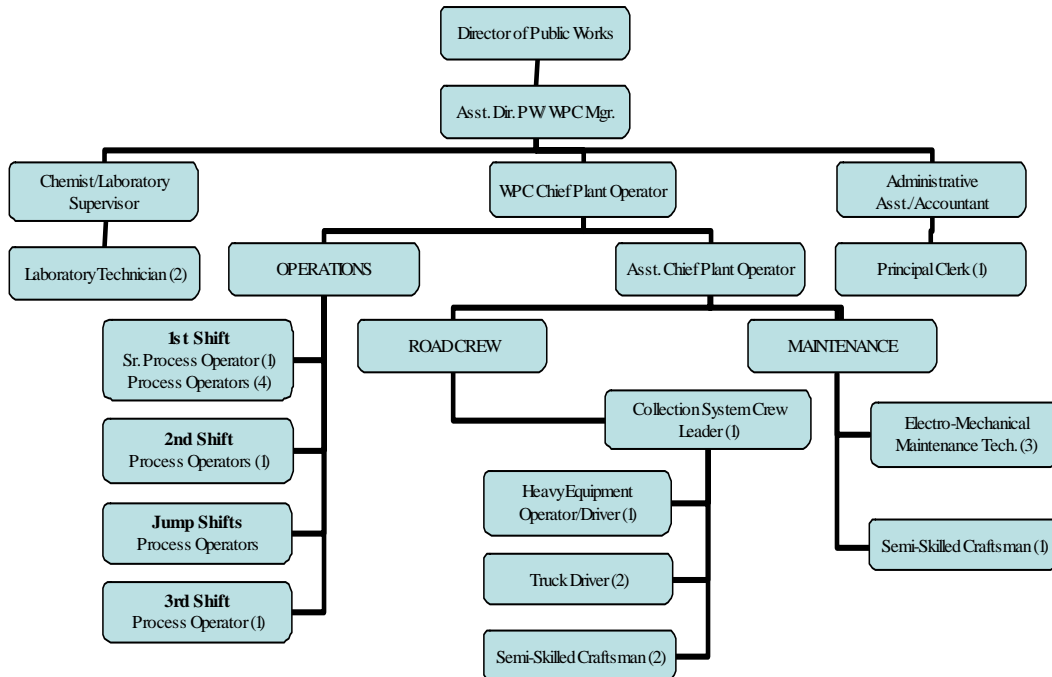
Quantitative:

ACTIVITY	2005-2006 Actual	2006-2007 Estimated	2007-2008 Projected
Treatment Operations Activity			
Wastewater Treated	3.66 bil. gals	3.30 bil. gals	3.10 bil. gals
Solids processed	7,900 tons	7,200 tons	7,500 tons
Collection System Activity			
Requests for Sewer Maint.	8	6	5
Maintenance Activity			
OT Pump Station Repairs	9	7	5

Expenditure & Position Summary

	2005-06	2006-07 Est.	2007-08 Proposed
Salary and Health Benefits	\$ 1,648,000	\$ 1,707,000	\$1,879,000
Full Time Positions	26	26	26

Organizational Chart



**Program Summaries-
Special Revenue Funds**

Special Revenue Funds- Sewer Operating Assessment Fund (continued)



Water Pollution Control Facility



Screw Pumps lift the water from the Primary clarifiers up into the aeration/nitrification tanks. Each screw pump can move 7,600 gallons per minute.

**Program Summaries-
Special Revenue Funds**

Special Revenue Funds- Sewer Operating Assessment Fund (continued)

Budget Highlights

Total Operating Budget for fiscal year 2007-2008 is \$ 5,038,670. Capital Outlay requests of \$316,000 include replacement and upgrades of equipment at the main treatment plant.

1183014 WATER POLLUTION CONTROL REVENUE

OBJECT	PROJECT	DESCRIPTION	PRIOR YEAR ACTUAL 2005-2006	ORIGINAL BUDGET 2006-2007	REVISED BUDGET 2006-2007	BUDGET REQUEST 2007-2008	JOINT BOARD APPROVED 2007-2008
TAXES & PRIOR LEVIES							
410003		ASSESSMENTS-INTEREST, LIENS & PENAL	\$576	\$4,000	\$4,000	\$2,500	\$2,500
TOTAL TAXES & PRIOR LEVIES			\$576	\$4,000	\$4,000	\$2,500	\$2,500
FINES/FEES							
422005		CUSTOMER DUMPING FEES	\$35,077	\$22,000	\$22,000	\$40,470	\$40,470
422006		UNMETERED COMMERCIAL SEWER USER	978,141	975,000	975,000	1,038,375	1,038,375
422007		UNMETERED DOMESTIC SEWER USER FE	2,651,060	2,600,000	2,600,000	2,790,300	2,790,300
422008		UNMETERED FACTORY SEWER USER FEE:	95,175	165,000	165,000	186,375	186,375
422009		UNMETERED PUBLIC SEWER USER FEES	200,347	180,000	180,000	207,675	207,675
TOTAL FINES/FEES			\$3,959,800	\$3,942,000	\$3,942,000	\$4,263,195	\$4,263,195
LICENSE, PERMITS, FEES							
442015		SEWER CONNECTION PERMITS	\$88,200	\$85,000	\$85,000	\$92,400	\$92,400
TOTAL LICENSE, PERMITS, FEES			\$88,200	\$85,000	\$85,000	\$92,400	\$92,400
CHARGES FOR SERVICES							
402000		SEWER ASSESSMENTS & ADJUSTMENTS	\$9,975	\$12,000	\$12,000	\$137,800	\$137,800
TOTAL CHARGES FOR SERVICES			\$9,975	\$12,000	\$12,000	\$137,800	\$137,800
INVESTMENT EARNINGS							
1181019	460000	INTEREST INCOME	\$99,870	\$75,000	\$75,000	\$120,000	\$120,000
1181019	460006	INTEREST ACCOUNTS RECEIVABLE	137	0	0	0	0
TOTAL INVESTMENT EARNINGS			\$100,006	\$75,000	\$75,000	\$120,000	\$120,000
OTHER/MISCELLANEOUS REVENUE							
454001		MISCELLANEOUS- OTHER	\$22,463	\$17,200	\$17,200	\$7,975	\$7,975
454008		MISCELLANEOUS-UTILITY REVENUE	0	0	0	48,000	48,000
480013		MISCELLANEOUS REVENUE LIENS	4,620	4,000	4,000	4,000	4,000
480014		MISCELLANEOUS PENALTIES SEWER USE:	33,509	29,000	29,000	29,000	29,000
TOTAL OTHER/MISCELLANEOUS			\$60,592	\$50,200	\$50,200	\$88,975	\$88,975
OTHER FINANCING SOURCES							
461002		BUDGETARY FUND BALANCE UNRESTRIC1	\$0	\$195,000	\$673,331	\$0	\$0
490300		TRANSFER IN CAPITAL PROJECTS	0	386,100	386,100	333,800	333,800
TOTAL OTHER FINANCING SOURCES			\$0	\$581,100	\$1,059,431	\$333,800	\$333,800
TOTAL WATER POLLUTION CONTROL			\$4,219,149	\$4,749,300	\$5,227,631	\$5,038,670	\$5,038,670

WATER POLLUTION CONTROL EXPENDITURES CONTINUED ON NEXT PAGE

**Program Summaries-
Special Revenue Funds**

Special Revenue Funds- Water Pollution Control (continued)

1183014 WATER POLLUTION CONTROL

OBJECT	PROJECT	DESCRIPTION	PRIOR YEAR ACTUAL 2005-2006	ORIGINAL BUDGET 2006-2007	REVISED BUDGET 2006-2007	BUDGET REQUEST 2007-2008	JOINT BOARD APPROVED 2007-2008
SALARIES							
514000		REGULAR WAGES	\$1,090,701	\$1,255,952	\$1,222,952	\$1,280,145	\$1,280,145
515100		OVERTIME	47,879	60,400	60,400	62,000	62,000
517000		OTHER WAGES	31,543	22,589	42,586	23,585	23,585
TOTAL SALARIES			\$1,170,123	\$1,338,941	\$1,325,938	\$1,365,730	\$1,365,730
CONTRACTURAL SERVICES							
522000		LOCAL 233 YEARLY ALLOWANCE	\$500	\$500	\$500	\$500	\$500
531000		PROFESSIONAL FEES AND SERVICES	20,294	18,000	18,000	12,000	12,000
531150		ADMINISTRATIVE FEES	52,975	53,600	53,600	53,600	53,600
534400		SEWER INSPECTIONS	3,500	5,000	5,000	5,000	5,000
541000		PUBLIC UTILITIES	739,924	720,000	720,000	910,000	910,000
541100		PROPANE WATER AND SEWER CHARGES	8,109	8,000	8,000	8,600	8,600
542120		TIPPING FEES	494,159	528,000	528,000	536,000	536,000
543000		REPAIRS AND MAINTENANCE	54,645	66,000	67,560	64,000	64,000
543100		MOTOR VEHICLE SERVICE AND REPAIR	1,639	3,500	3,500	3,000	3,000
543110		MAJOR REPAIRS	104,366	75,000	75,000	80,000	80,000
544400		RENTS AND LEASES	2,628	3,000	3,000	3,000	3,000
553000		TELEPHONE	2,453	2,800	2,800	2,500	2,500
553100		POSTAGE	583	800	800	600	600
554000		TRAVEL REIMBURSEMENT	268	300	300	300	300
555000		PRINTING AND BINDING	317	200	200	200	200
557700		ADVERTISING	848	1,500	1,500	1,500	1,500
581120		CONFERENCES AND MEMBERSHIPS	257	300	300	450	450
581135		SCHOOLING AND EDUCATION	2,121	2,400	2,400	2,400	2,400
581280		LIEN FEES	5,330	4,500	4,500	4,500	4,500
589100		MISCELLANEOUS	4,932	6,800	26,600	7,975	7,975
TOTAL CONTRACTURAL SERVICES			\$1,499,849	\$1,500,200	\$1,521,560	\$1,696,125	\$1,696,125
BENEFITS							
520000		EMPLOYEE BENEFITS	\$3,403	\$3,778	\$3,778	\$3,780	\$3,780
520700		F.I.C.A.	72,454	83,014	83,014	88,775	88,775
520750		MEDICARE INSURANCE	16,946	19,415	19,415	19,800	19,800
TOTAL BENEFITS			\$92,803	\$106,207	\$106,207	\$112,355	\$112,355
SUPPLIES AND MATERIALS							
561150		LABORATORY SUPPLIES	\$16,173	\$17,000	\$17,000	\$17,000	\$17,000
561400		MAINTENANCE SUPPLIES AND MATERIALS	204,175	206,000	206,000	204,000	204,000
561800		PROGRAM SUPPLIES	58,801	70,000	70,000	72,000	72,000
562000		HEATING FUELS	92,834	84,000	84,000	84,000	84,000
562600		MOTOR FUELS	15,097	18,000	18,000	18,000	18,000
563000		MOTOR VEHICLE PARTS	6,045	6,000	6,000	5,500	5,500
563100		TIRES TUBES AND CHAINS	2,236	3,800	3,800	3,000	3,000
569000		OFFICE SUPPLIES	1,726	2,000	2,000	2,000	2,000
TOTAL SUPPLIES AND MATERIALS			\$397,088	\$406,800	\$406,800	\$405,500	\$405,500
CAPITAL OUTLAY							
570300	02156	ODOR CONTROL	\$2,200	\$0	\$2,200	\$0	\$0
570300	03061	MATTHEWS STREET TELEMETRY SYSTEM	6,450	0	6,450	0	0
570300	04035	SEWER REPLACEMENT PROGRAM	0	0	70,000	0	0
570300	05054	SEWER REPLACEMENT PROGRAM	0	0	60,000	0	0
570300	06020	LAKE AVENUE FUEL TANK REPLACEMENT	32,100	0	0	0	0
570300	07039	FUEL TANK REPLACEMENT	0	85,000	85,000	0	0
570400	04032	POLYMER METERING SYSTEM	14,104	0	0	0	0

**Program Summaries-
Special Revenue Funds**

Special Revenue Funds- Water Pollution Control (continued)

CAPITAL OUTLAY (continued)

570400	05051	LAPTOP SCADA SOFTWARE PUMP STATION	1,200	0	1,200	0	0
570400	06021	SCREENINGS PROCESSOR	46,500	0	562	0	0
570400	06024	BELT FILTER PRESS POLYMER SYSTEM	14,104	0	0	0	0
570400	06025	SECONDARY CLARIFIER BRUSHES	0	0	16,000	0	0
570400	06026	AUTOMATED BARSCREEN REPLACEMENT	76,675	0	0	0	0
570400	06030	GRINDER	10,000	0	0	0	0
570400	07030	SCUM PUMP	0	16,000	16,000	0	0
570400	07031	BEARING REPLACEMENT	0	17,000	17,000	0	0
570400	07032	IMPELLORS	0	9,600	9,600	0	0
570400	07035	SEPTAGE GRINDERS	0	11,500	11,500	0	0
570400	07036	VIDEO INSPECTION CAMERA	0	8,000	8,000	0	0
570400	07037	DIGITAL CAMERA	0	3,600	3,600	0	0
570400	07038	AERATION SYSTEM BLOWER REPLACEMENT	0	140,000	140,000	0	0
570400	08048	BPF FEED PUMP & VARIABLE SPEED DRIVE	0	0	0	32,000	32,000
570400	08049	WAS PUMP REPLACEMENT	0	0	0	20,000	20,000
570400	08050	DEWATERING SCREW REPLACEMENT	0	0	0	15,000	15,000
570400	08052	SCREW PUMP UPGRADE	0	0	0	44,000	44,000
570400	08053	SPRAY WATER PUMPS	0	0	0	18,000	18,000
570400	08054	SCREENING CONVEYOR	0	0	0	65,000	65,000
570400	08056	SECONDMIXER FOR PUMP HOUSE	0	0	0	4,000	4,000
570400	08057	EMERGENCY RESPONSE EQUIPMENT- BYPASS	0	0	0	32,000	32,000
570400	08058	PRIMARY TROUGH GATES- TANK #3	0	0	0	6,000	6,000
570500	06023	CREW CAB TRUCK REPLACEMENT	33,000	0	0	0	0
570500	07033	PICKUP REPLACEMENT	0	17,500	17,500	0	0
570500	08051	MECHANICS TRUCK (CRANE & SIDE BOXES)	0	0	0	65,000	65,000
570500	08055	FORKLIFT REPLACEMENT	0	0	0	15,000	15,000
570900	03066	SEWER REPLACEMENT PROGRAM	32,460	0	28,365	0	0
570900	04033	PLANT DATA GATHERING SYSTEM	15,500	0	5,602	0	0
570900	04036	ODOR CONTROL MAINTENANCE	7,800	0	0	0	0
570900	04037	SECONDARY CLARIFIER IMPROVEMENT	14,910	0	11,576	0	0
570900	05047	REPLACE GENERATOR EXHAUST SYSTEM	0	0	38,000	0	0
570900	05049	PLANT SCADA UPGRADES- PHASE 2	58,003	0	35,866	0	0
570900	05050	REPLACE CONTROL PANEL- BELT FILTER PRESS	0	0	60,000	0	0
570900	06022	GRINDER REPLACEMENT SEPTAGE PUMPS	9,800	0	0	0	0
570900	06027	WET WELL MIXES W/ WEIGHTED STAND	6,410	0	3,590	0	0
570900	06028	HOT WATER PRESSURE WASHER	3,825	0	0	0	0
570900	06029	JULIA & CHERRY PUMP STATION DRIVEWAY REPAI	0	0	34,000	0	0
570900	06031	AERATION TANK VALVE ACTUATORS	10,072	0	0	0	0
570900	07028	SAND BLAST	0	72,000	72,000	0	0
570900	07029	ALARM PANEL	0	17,000	17,000	0	0
570900	07034	SEWER MAPS	0	4,800	4,800	0	0
570900	07044	SCREW PUMP REPAIR	0	0	150,000	0	0
TOTAL CAPITAL OUTLAY			\$395,113	\$402,000	\$925,411	\$316,000	\$316,000
OTHER/MISCELLANEOUS							
520400		WORKERS' COMPENSATION	\$75,000	\$50,000	\$50,000	\$30,000	\$30,000
552100		LIABILITY INSURANCE	48,323	53,150	53,150	47,800	47,800
589000		CONTINGENCY	0	50,690	50,693	76,310	76,310
589120		REFUNDS OF SEWER USER FEES	3,304	2,000	2,000	2,000	2,000
TOTAL OTHER/ MISCELLANEOUS			\$126,627	\$155,840	\$155,843	\$156,110	\$156,110
OPERATING TRANSFERS OUT							
591001		TRANSFERS TO GENERAL FUND	\$11,403	\$16,000	\$16,000	\$2,000	\$2,000
591300		TRANSFERS TO CAPITAL PROJECTS	400,000	456,102	456,102	583,800	583,800
591500		TRANSFERS TO INTERNAL SERVICE	317,577	367,210	367,210	401,050	401,050
TOTAL OPERATING TRANSFERS OUT			\$728,979	\$839,312	\$839,312	\$986,850	\$986,850
TOTAL WATER POLLUTION CONTROL			\$4,410,582	\$4,749,300	\$5,281,071	\$5,038,670	\$5,038,670

**Program Summaries-
Special Revenue Funds**

SOLID WASTE DISPOSAL FUND

Service Narrative

The Solid Waste Disposal fund is used to account for the operations of the City's solid waste disposal program. All solid waste expenditures are made from this fund and are paid to Bristol Resource Recovery Facility (BRRFOC). This includes all costs for the disposal of City refuse collected by the City's Public Works Solid Waste Division and for private haulers who are charged to bring refuse to Covanta-Bristol Facility, a trash to energy plant. This fund is funded by a transfer from the General Fund for City refuse and the private haulers are billed monthly based on tonnage.

Budget Highlights

1213016 SOLID WASTE DISPOSAL FUND REVENUE

OBJECT	PROJECT	DESCRIPTION	PRIOR YEAR ACTUAL 2005-2006	ORIGINAL BUDGET 2006-2007	REVISED BUDGET 2006-2007	BUDGET REQUEST 2007-2008	JOINT BOARD APPROVED 2007-2008
LICENSE, PERMITS, FEES							
442017		SOLID WASTE DISPOSAL PERMIT	\$179,153	\$140,000	\$140,000	\$178,000	\$178,000
TOTAL LICENSE, PERMITS, FEES			\$179,153	\$140,000	\$140,000	\$178,000	\$178,000
CHARGES FOR SERVICES							
450114		HAULER CHARGES	\$1,451,047	\$1,463,500	\$1,463,500	\$1,462,290	\$1,462,290
TOTAL CHARGES FOR SERVICES			\$1,451,047	\$1,463,500	\$1,463,500	\$1,462,290	\$1,462,290
INVESTMENT EARNINGS							
460000		INTEREST INCOME	\$47,955	\$50,000	\$50,000	\$50,000	\$50,000
460006		INTEREST ACCOUNTS RECEIVABLE	38	0	0	0	0
TOTAL INVESTMENT EARNINGS			\$47,992	\$50,000	\$50,000	\$50,000	\$50,000
OTHER/MISCELLANEOUS REVENUE							
480000		CITY OF BRISTOL HOST FEE	\$95,177	\$84,170	\$84,170	\$84,170	\$84,170
TOTAL OTHER/MISCELLANEOUS			\$95,177	\$84,170	\$84,170	\$84,170	\$84,170
OPERATING TRANSFERS IN							
490001		TRANSFER IN GENERAL FUND	\$1,308,450	\$1,387,030	\$1,387,030	\$1,301,425	\$1,301,425
TOTAL OPERATING TRANSFERS IN			\$1,308,450	\$1,387,030	\$1,387,030	\$1,301,425	\$1,301,425
TOTAL SOLID WASTE DISPOSAL FUND			\$3,081,820	\$3,124,700	\$3,124,700	\$3,075,885	\$3,075,885

1213016 SOLID WASTE DISPOSAL FUND

OBJECT	PROJECT	DESCRIPTION	PRIOR YEAR ACTUAL 2005-2006	ORIGINAL BUDGET 2006-2007	REVISED BUDGET 2006-2007	BUDGET REQUEST 2007-2008	JOINT BOARD APPROVED 2007-2008
CONTRACTUAL SERVICES							
542140		CITY REFUSE	\$1,659,820	\$1,661,200	\$1,661,200	\$1,613,595	\$1,613,595
542150		PRIVATE HAULER REFUSE	1,438,779	1,463,500	1,463,500	1,462,290	1,462,290
TOTAL CONTRACTUAL SERVICES			\$3,098,599	\$3,124,700	\$3,124,700	\$3,075,885	\$3,075,885
SOLID WASTE DISPOSAL FUND TOTAL			\$3,098,599	\$3,124,700	\$3,124,700	\$3,075,885	\$3,075,885



Bristol's "Trash to Energy" Facility owned and operated by Covanta Energy Corp.

SCHOOL LUNCH PROGRAM

Greg Boulanger, Director
Office: (860) 584-7984
gregboulanger@ci.bristol.ct.us

Service Narrative

The Bristol School Food Services department operates under the direction of the Bristol Board of Education, Child Nutrition Services and USDA Child Nutrition Program. The district adopts annually the National School Breakfast and National School Lunch Programs. The department of food services is "administratively reviewed" by the State of Connecticut Department of Education, Child Nutrition Services.

Their mission is to provide students with healthy, nutritious and appealing foods in a timely manner and in a pleasant environment every day.

The district enrollment for fiscal year 2007 was approximately 9,160. The food service department served 902,807 reimbursable lunches and breakfasts during this school year. In addition to the National School Lunch Program and National School Breakfast Program the department also operates a Special Milk Program and After School Snack Program.

The program receives funding through Department of Education Child Nutrition Offices through both federal and state grants as well as through sales revenues. The department operates 16 food services sites throughout the district.

The main office for the Department of Food Services is at the Board of Education building, 129 Church St., Room 26.

Budget Highlights

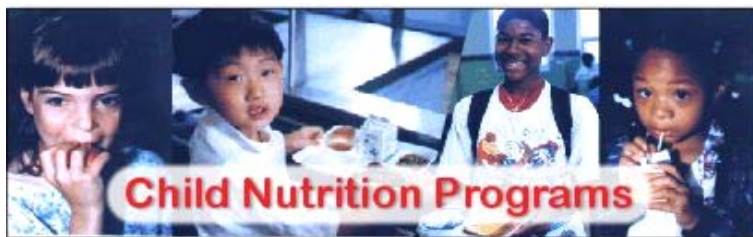
1275000 SCHOOL LUNCH PROGRAM			PRIOR YEAR ACTUAL 2005-2006	ORIGINAL BUDGET 2006-2007	REVISED BUDGET 2006-2007	BUDGET REQUEST 2007-2008	JOINT BOARD APPROVED 2007-2008
OBJECT	PROJECT	DESCRIPTION					
CHARGES FOR SERVICES							
450307		SCHOOL LUNCHES	\$1,697,690	\$1,734,145	\$1,734,145	\$1,751,665	\$1,751,665
450308		OTHER SALES	41,402	42,000	42,000	44,000	44,000
TOTAL CHARGES FOR SERVICES			\$1,739,092	\$1,776,145	\$1,776,145	\$1,795,665	\$1,795,665
INVESTMENT EARNINGS							
460000		INTEREST INCOME	\$8,538	\$1,000	\$1,000	\$0	\$0
TOTAL INVESTMENT EARNINGS			\$8,538	\$1,000	\$1,000	\$0	\$0
FEDERAL GRANTS							
431007		FEDERAL REIMBURSEMENT	\$1,091,957	\$968,000	\$968,000	\$1,011,125	\$1,011,125
TOTAL FEDERAL GRANTS			\$1,091,957	\$968,000	\$968,000	\$1,011,125	\$1,011,125
STATE GRANTS							
432038		MISC. STATE REIMBURSEMENT	\$62,176	\$57,450	\$57,450	\$136,350	\$136,350
TOTAL STATE GRANTS			\$62,176	\$57,450	\$57,450	\$136,350	\$136,350
OPERATING TRANSFERS IN							
490001		TRANSFER IN GENERAL FUND	\$50,000	\$0	\$0	\$0	\$0
TOTAL OPERATING TRANSFERS IN			\$50,000	\$0	\$0	\$0	\$0
TOTAL SCHOOL LUNCH REVENUE			\$2,951,763	\$2,802,595	\$2,802,595	\$2,943,140	\$2,943,140

**Program Summaries-
Special Revenue Funds**

Special Revenue Funds- School Lunch Program (continued)

C4003100 SCHOOL LUNCH PROGRAM

OBJECT	PROJECT	DESCRIPTION	PRIOR YEAR ACTUAL 2005-2006	ORIGINAL BUDGET 2006-2007	REVISED BUDGET 2006-2007	BUDGET REQUEST 2007-2008	JOINT BOARD APPROVED 2007-2008
SALARIES							
512100		SUPERVISOR'S CAFETERIA	\$96,728	\$112,015	\$112,015	\$116,080	\$116,080
512110		CAFETERIA WORKERS	970,348	939,590	939,590	967,715	967,715
512120		CAFETERIA DRIVERS	10,611	1,500	1,500	1,000	1,000
512130		REPLACEMENTS	30,631	25,000	25,000	25,000	25,000
TOTAL SALARIES			\$1,108,317	\$1,078,105	\$1,078,105	\$1,109,795	\$1,109,795
BENEFITS							
520000		EMPLOYEE BENEFITS	\$0	\$0	\$0	\$0	\$0
520700		FICA	68,050	65,140	65,140	66,810	66,810
520750		MEDICARE	15,915	15,235	15,235	15,850	15,850
TOTAL BENEFITS			\$83,964	\$80,375	\$80,375	\$82,660	\$82,660
SUPPLIES AND MATERIALS							
561600		FOOD SUPPLIES	\$1,285,588	\$1,114,815	\$1,113,657	\$1,199,545	\$1,199,545
561700		SCHOOL LUNCH SUPPLIES	139,048	130,000	130,000	130,000	130,000
TOTAL SUPPLIES AND MATERIALS			\$1,424,636	\$1,244,815	\$1,243,657	\$1,329,545	\$1,329,545
CAPITAL OUTLAY							
573000		EQUIPMENT	\$67,320	\$0	\$0	\$0	\$0
TOTAL CAPITAL OUTLAY			\$67,320	\$0	\$0	\$0	\$0
OTHER/MISCELLANEOUS							
581500		NON-LUNCH EXPENSE	\$12,093	\$14,000	\$15,158	\$14,000	\$14,000
TOTAL OTHER/MISCELLANEOUS			\$12,093	\$14,000	\$15,158	\$14,000	\$14,000
OPERATING TRANSFERS OUT							
591500		TRANSFER OUT INTERNAL SERVICE	\$345,930	\$385,300	\$385,300	\$407,140	\$407,140
TOTAL OPERATING TRANSFERS OUT			\$345,930	\$385,300	\$385,300	\$407,140	\$407,140
TOTAL SCHOOL LUNCH EXPENDITURES			\$3,042,260	\$2,802,595	\$2,802,595	\$2,943,140	\$2,943,140



PINE LAKE CHALLENGE COURSE FUND

Eileen McNulty, Director
Don Gagliardi, Coordinator
Office: (860) 314-4690
eileenmcnulty@ci.bristol.ct.us

Service Narrative

Bristol Youth Services operates a state-of-the-art outdoor challenge course and experiential adventure-based programs. The Pine Lake Challenge Course is nestled in a small wooded area of a public park within the urban community. The Course consists of more than 45 different elements or stations constructed with a series of ropes, cables, and obstacles in a grove of trees and an abutting playing field. The Pine Lake Challenge Course and its facilities span over seven acres.

The Challenge Course elements are designed to create certain challenges for a group and for individuals with the support of a group. The elements and stations can be adapted for comparable adventure-based experiences for individuals with physical disabilities. The elements are designed to test teamwork, communication skills, creativity and the degree of cooperation within the group. Other challenges are intended to challenge an individual's sense of balance, agility, trust, perseverance, and leadership. In addition, adventure programs which involve games, initiatives, and portable elements may be delivered to a group at community locations. All activities are facilitated by professionally trained staff that utilizes special skills and techniques to make the experience safe, meaningful, and exciting.

The Pine Lake Challenge Course was created as a result of community development efforts of the Bristol Community Leadership Team involving schools, youth service bureaus, youth recreational organizations, and public and private non-profit agencies. Construction was made possible through funding received from the Connecticut State Department of Education and donations from businesses and citizens. The primary focus of PLCC programs is to enrich educational and youth service programs. Programs are delivered at Pine Lake Challenge course or at schools and community locations.

The Pine Lake Challenge course & Adventure Program is self-sustaining through revenues generated by user fees.

Performance Measures

Quantitative:

	Service Days		Unduplicated Groups		Total Participants	
	FY 05-06	FY 06-07	FY 05-06	FY 06-07	FY 05-06	FY 06-07
PINE LAKE ADVENTURE PROGRAM	109	96	48	59	5,032	3,601

Expenditure and Position Summary

	2006 Actual	2007 Estimated	2008 Budget
Salary /Hourly Wage Expenditures	\$100,321	\$141,000	\$145,230
Part-Time Positions	7 – 25 Seasonal	7- 25 Seasonal	7 – 50 Seasonal

**Program Summaries-
Special Revenue Funds**

Special Revenue Funds – Pine Lake (continued)

Budget Highlights

1321032 PINE LAKE CHALLENGE COURSE REVENUE

OBJECT	PROJECT	DESCRIPTION	PRIOR YEAR ACTUAL 2005-2006	ORIGINAL BUDGET 2006-2007	REVISED BUDGET 2006-2007	BUDGET REQUEST 2007-2008	JOINT BOARD APPROVED 2007-2008
LICENSE, PERMITS, FEES							
422004		CHALLENGE COURSE FEES	\$157,176	\$178,810	\$178,810	\$182,055	\$182,055
TOTAL LICENSE, PERMITS, FEES			\$157,176	\$178,810	\$178,810	\$182,055	\$182,055
INVESTMENT EARNINGS							
460000		INTEREST INCOME	\$4,650	\$2,500	\$2,500	\$2,500	\$2,500
TOTAL INVESTMENT EARNINGS			\$4,650	\$2,500	\$2,500	\$2,500	\$2,500
TOTAL PINE LAKE CHALLENGE COURSE			\$161,826	\$181,310	\$181,310	\$184,555	\$184,555

1321032 PINE LAKE CHALLENGE COURSE

OBJECT	PROJECT	DESCRIPTION	PRIOR YEAR ACTUAL 2005-2006	ORIGINAL BUDGET 2006-2007	REVISED BUDGET 2006-2007	BUDGET REQUEST 2007-2008	JOINT BOARD APPROVED 2007-2008
SALARIES							
515300		SEASONAL WAGES	\$100,321	\$141,000	\$141,000	\$145,230	\$145,230
TOTAL SALARIES			\$100,321	\$141,000	\$141,000	\$145,230	\$145,230
CONTRACTUAL SERVICES							
531000		PROFESSIONAL FEES AND SERVICES	\$19,864	\$22,000	\$22,000	\$22,000	\$22,000
543200		EQUIPMENT MAINTENANCE CONTRACTS	2,556	4,000	4,000	3,000	3,000
553000		TELEPHONE	472	530	530	1,275	1,275
553100		POSTAGE	321	430	430	450	450
555000		PRINTING AND BINDING	0	1,000	1,000	1,000	1,000
581135		SCHOOLING AND EDUCATION	0	3,250	3,250	3,250	3,250
TOTAL CONTRACTUAL SERVICES			\$23,212	\$31,210	\$31,210	\$30,975	\$30,975
SUPPLIES AND MATERIALS							
561400		MAINTENANCE SUPPLIES AND MATERIALS	\$342	\$1,250	\$1,250	\$1,000	\$1,000
561800		PROGRAM SUPPLIES	5,684	7,500	7,500	7,000	7,000
569000		OFFICE SUPPLIES	340	350	350	350	350
TOTAL SUPPLIES AND MATERIALS			\$6,366	\$9,100	\$9,100	\$8,350	\$8,350
PINE LAKE CHALLENGE COURSE TOTAL			\$129,898	\$181,310	\$181,310	\$184,555	\$184,555



Pictures taken at one of the Pine Lake Challenge Course Programs

LOCIP PROJECTS FUND

Service Narrative

The LoCIP Projects Fund accounts for the activities of all the Local Capital Improvement Projects approved by the State of Connecticut's Office of Policy and Management. This revenue source is budgeted when the Capital Budget is approved. The approved 2008 budget for LoCIP Projects totals \$1,065,000 which can be viewed behind the "Capital Budget Summary" tab, in the Program Profiles section.

1341018 LOCIP PROJECTS FUND- REVENUE

OBJECT PROJECT	DESCRIPTION	PRIOR YEAR ACTUAL 2005-2006	ORIGINAL BUDGET 2006-2007	REVISED BUDGET 2006-2007	BUDGET REQUEST 2007-2008	BOARD OF FINANCE APPROVED 2007-2008
STATE GRANTS						
432033	STATE OF CONNECTICUT OPM	\$1,225,314	\$428,000	\$428,000	\$1,065,000	\$1,065,000
TOTAL STATE GRANTS		\$1,225,314	\$428,000	\$428,000	\$1,065,000	\$1,065,000
TOTAL LOCIP PROJECTS FUND		\$1,225,314	\$428,000	\$428,000	\$1,065,000	\$1,065,000

134 LOCIP PROJECTS FUND

OBJECT PROJECT	DESCRIPTION	PRIOR YEAR ACTUAL 2005-2006	ORIGINAL BUDGET 2006-2007	REVISED BUDGET 2006-2007	BUDGET REQUEST 2007-2008	BOARD OF FINANCE APPROVED 2007-2008
OPERATING TRANSFERS OUT						
570000	LOCIP EXPENDITURES	\$1,239,137	\$428,000	\$428,000	\$1,065,000	\$1,065,000
TOTAL OPERATING TRANSFERS OUT		\$1,239,137	\$428,000	\$428,000	\$1,065,000	\$1,065,000
TOTAL LOCIP PROJECTS FUND		\$1,239,137	\$428,000	\$428,000	\$1,065,000	\$1,065,000