

BOARD OF EDUCATION SUMMARY

Philip Streifer, Phd. Superintendent of School
Main Number: 584-7000

Service Narrative

The Bristol Public School system provides educational services ranging from pre-school programs through adult education programs. Within the system, there are ten elementary schools, which accommodate grades kindergarten through five; three middle schools, which provide programs for grades six, seven and eight; and two high schools, which are comprehensive high schools for grades nine through twelve.

In addition to these schools, alternative education programs are provided at the Bristol Community Senior Center. Bristol maintains an extensive special education program with a variety of services provided for handicapped and learning disabled students from pre-school to age twenty-one. Bristol's program for gifted and talented children includes special programs and resource services for students identified as gifted or talented in grades three through twelve. The academic program is complemented by a wide variety of extracurricular activities, including intramural and interscholastic sports, instrumental and vocal music programs, and many student organizations, which are available to all students.

The community is further served by a parochial school system of four elementary (K-8) schools and one high school. The Bristol Technical Educational Center is open to adults and high school students in grades 11 and 12, and is approved by veterans. Opportunities for post-secondary education in technical, professional and the liberal arts field abound in the area through both public and private schools. A regional community/technical college is situated one mile over the Bristol border in the town of Farmington and Central Connecticut State University is in nearby New Britain. Branches of the University of Connecticut and State technical colleges are located in both Waterbury and Hartford, twenty minutes away. Also available in the area are nursery schools and day care facilities, as well as Latchkey programs in all of the elementary schools in Bristol.

Miscellaneous Information

| Education: | Number |
|---|---------------|
| High schools | 2 |
| Middle schools (6 th , 7 th and 8 th) | 3 |
| Elementary schools | 10 |
| High school students | 2,741 |
| Middle school students | 2,026 |
| Elementary students | 4,282 |
| Special education students | 51 |
| Teachers | 684 |
| Administrative and non-teaching personnel | 468 |
| Student enrollment as of 10/1/06 | 8,992 |

**Program Summaries-
Board of Education Summary**

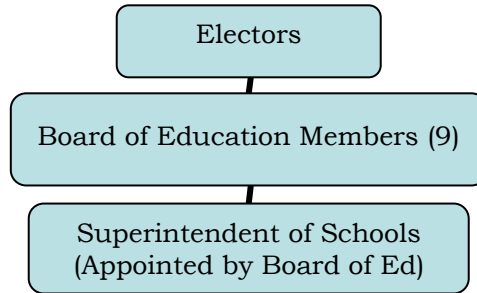
Board of Education Summary (continued)

BOARD OF EDUCATION FULL-TIME EMPLOYEES

| Department | 2005-2006 | 2006-2007 | 2007-2008 |
|--------------------|------------------|------------------|------------------|
| Board of Education | 1,135 | 1,148 | 1,155.3 |
| Total | 1,135 | 1,148 | 1,155.3 |

| Board of Education Bargaining Units | Employees Represented |
|---|------------------------------|
| Bristol Federation of Teachers Local 1464 | 686 |
| Bristol Association of Principals & Supervisors | 40 |
| Bristol Educational Secretaries Association | 77.3 |
| Bristol Municipal Employees Local 2267 Board of Education Custodial, Maintenance & Health Aides and Teacher Aides Local 2267 Council No. 4 (Board of Education Cafeteria) | 296 |
| Bristol Association of Crossing Guards | 28 |
| Council 4 | 6 |
| Non-Bargaining Employees | 22 |
| Total Board of Education Employees | 1,155.3 |

Organizational Chart



Renovations to Ivy Drive Elementary School

**Program Summaries-
Education Summary**

Board of Education Summary (continued)

Budget Highlights

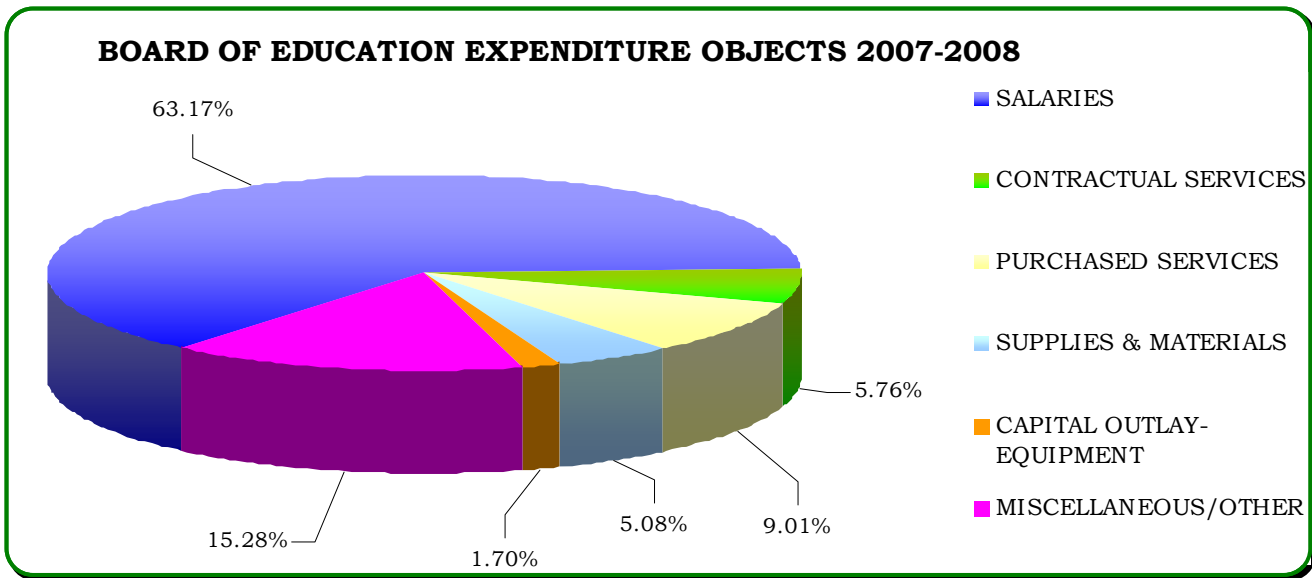
**CITY OF BRISTOL, CONNECTICUT
2007-2008
GENERAL FUND EXPENDITURE SUMMARY FOR EDUCATION**

| ORGCODE | DESCRIPTION | PRIOR YEAR ACTUAL 2005-2006 | ORIGINAL BUDGET 2006-2007 | REVISED BUDGET 2006-2007 | BUDGET REQUEST 2007-2008 | JOINT BOARD APPROVED 2007-2008 |
|-------------------------------------|---|-----------------------------------|---------------------------------|--------------------------------|--------------------------------|---|
| PA481 | PUBLIC ACT 481 | \$128,435 | \$0 | \$0 | \$0 | \$0 |
| 1100 | REGULAR INSTRUCTION | 10,863,469 | 11,437,133 | 11,362,133 | 11,856,802 | 10,056,802 |
| 1102 | ART | 1,369,450 | 1,457,492 | 1,454,682 | 1,499,676 | 1,499,676 |
| 1103 | BUSINESS EDUCATION | 638,913 | 670,394 | 666,900 | 592,338 | 592,338 |
| 1105 | ENGLISH (GRADES 9-12) | 3,779,388 | 4,211,583 | 4,210,783 | 4,431,978 | 4,431,978 |
| 1106 | WORLD LANGUAGES (GRADES 7-12) | 1,276,642 | 1,330,691 | 1,337,191 | 1,313,239 | 1,313,239 |
| 1108 | HEALTH/LIFE SKILLS (GRADES 6-12) | 348,908 | 604,518 | 603,518 | 651,555 | 651,555 |
| 1109 | FAMILY & CONSUMER SCIENCE (6-12) | 900,992 | 520,984 | 519,134 | 590,229 | 590,229 |
| 1110 | TECHNOLOGY (GRADES 6-12) | 1,305,397 | 1,356,010 | 1,335,468 | 1,319,115 | 1,319,115 |
| 1111 | MATHEMATICS (GRADES 1-12) | 2,560,447 | 2,846,835 | 2,840,041 | 2,952,829 | 2,952,829 |
| 1112 | MUSIC (GRADES 1-12) | 1,501,117 | 1,489,143 | 1,488,989 | 1,588,200 | 1,588,200 |
| 1113 | SCIENCE (GRADES 1-12) | 2,783,911 | 2,949,731 | 2,945,910 | 2,925,938 | 2,925,938 |
| 1114 | LANGUAGE ARTS/ READING (GRADES 1-8) | 739,004 | 800,850 | 811,330 | 787,933 | 787,933 |
| 1115 | SOCIAL STUDIES (GRADES 1-12) | 2,644,855 | 2,773,456 | 2,768,267 | 2,880,535 | 2,880,535 |
| 1116 | PHYSICAL EDUCATION (GRADES K-12) | 1,662,614 | 1,730,298 | 1,729,745 | 1,787,632 | 1,787,632 |
| 1117 | VOCATIONAL EDUCATION | 9,750 | 0 | 0 | 0 | 0 |
| 1120 | ALTERNATIVE EDUCATION (GRADES 7-11) | 316,188 | 334,463 | 324,463 | 341,335 | 341,335 |
| 1121 | KINDERGARTEN | 1,107,527 | 1,205,560 | 1,204,589 | 1,321,271 | 1,321,271 |
| 1122 | PRESCHOOL PROGRAM | 267,395 | 282,369 | 282,369 | 308,842 | 308,842 |
| 1200 | SPECIAL EDUCATION | 7,059,966 | 7,470,164 | 7,470,164 | 8,196,454 | 8,196,454 |
| 1260 | E.S.L | 367,612 | 430,993 | 430,993 | 467,375 | 467,375 |
| 1270 | GIFTED/ TALENTED | 87,628 | 97,588 | 97,588 | 101,700 | 101,700 |
| 1300 | ADULT CONTINUING EDUCATION | 53,136 | 36,357 | 36,357 | 38,195 | 38,195 |
| 1310 | ADULT BASIC EDUCATION | 285,336 | 254,599 | 254,599 | 292,669 | 292,669 |
| 1400 | SUMMER SCHOOL | 36,632 | 51,213 | 51,213 | 61,297 | 61,297 |
| 2112 | ATTENDANCE SERVICES | 40,616 | 39,017 | 39,017 | 40,179 | 40,179 |
| 2113 | SOCIAL WORK SERVICES | 153,888 | 158,378 | 158,378 | 81,600 | 81,600 |
| 2120 | GUIDANCE SERVICES | 1,701,755 | 1,815,169 | 1,811,269 | 1,880,330 | 1,880,330 |
| 2122 | IN-HOUSE SUSPENSION | 8,699 | 30,000 | 30,000 | 30,000 | 30,000 |
| 2130 | OTHER HEALTH SERVICES | 582,643 | 6,090 | 6,090 | 6,000 | 6,000 |
| 2140 | PSYCHOLOGICAL SERVICES | 827,959 | 875,017 | 875,017 | 1,073,135 | 1,073,135 |
| 2150 | SPEECH/ HEARING SERVICES | 1,159,927 | 1,377,169 | 1,377,169 | 1,437,926 | 1,437,926 |
| 2190 | TESTING | 14,119 | 27,665 | 13,435 | 11,209 | 11,209 |
| 2210 | INSTRUCTIONAL SERVICES/ STAFF DEV. | 904,518 | 1,316,306 | 1,320,843 | 1,432,139 | 1,432,139 |
| 2221 | EDUCATIONAL MEDIA SERVICES | 528,463 | 573,000 | 573,000 | 611,493 | 611,493 |
| 2222 | LIBRARY SERVICES | 971,266 | 1,005,050 | 1,006,150 | 1,059,218 | 1,059,218 |
| 2223 | AUDIO-VISUAL SERVICES | 169,957 | 182,811 | 190,307 | 210,420 | 210,420 |
| 2225 | COMPUTER INSTRUCTION SERVICES | 1,076,307 | 1,153,697 | 1,427,795 | 1,541,132 | 1,541,132 |
| 2310 | BOARD OF EDUCATION SERVICES | 121,078 | 133,120 | 133,120 | 137,144 | 137,144 |
| 2317 | STAFF RELATIONS/NEGOTIATIONS | 22,749 | 21,000 | 21,000 | 21,000 | 21,000 |
| 2320 | OFFICE OF THE SUPERINTENDENT | 201,991 | 204,363 | 204,363 | 209,385 | 209,385 |
| 2321 | ASSISTANT SUPERINTENDENT'S OFFICE | 176,412 | 176,395 | 176,395 | 183,356 | 183,356 |
| 2329 | PERSONNEL DEPARTMENT | 357,112 | 324,589 | 334,589 | 376,156 | 376,156 |
| 2400 | OFFICE OF PRINCIPAL SERVICES | 4,316,576 | 4,638,215 | 4,621,194 | 4,913,463 | 4,913,463 |
| 2510 | FISCAL SERVICES | 3,729,376 | 15,431,585 | 4,116,928 | 16,349,957 | 15,441,957 |
| 2610 | MAINTENANCE OF PLANT | 2,321,059 | 2,388,283 | 2,388,283 | 3,103,708 | 3,103,708 |
| 2620 | OPERATION OF BUILDING SERVICES | 5,212,630 | 5,405,204 | 5,408,014 | 5,982,494 | 5,982,494 |
| 2700 | STUDENT TRANSPORTATION (REIMB.) | 4,102,512 | 3,865,085 | 3,865,085 | 4,065,670 | 4,065,670 |
| 2790 | OTHER STUDENT TRANSPORTATION | 146,061 | 141,750 | 141,750 | 147,900 | 147,900 |
| 2900 | OTHER EDUCATIONAL COSTS | 1,064,254 | 1,189,356 | 1,189,356 | 1,096,529 | 1,096,529 |
| 2902 | PROGRAM/INSTRUCTIONAL IMPROVEMENTS | 303,477 | 494,282 | 494,282 | 514,056 | 514,056 |
| 3200 | ENTERPRISE OPERATIONS | 226,965 | 357,820 | 355,916 | 356,728 | 356,728 |
| 3210 | ATHLETICS | 990,079 | 1,042,450 | 1,042,450 | 1,161,137 | 1,161,137 |
| 6110 | TUITION TO CONNECTICUT SCHOOL DISTRICTS | 1,136,141 | 1,067,090 | 1,067,090 | 1,164,919 | 1,164,919 |
| 6130 | TUITION TO NON-PUBLIC SCHOOLS | 2,424,824 | 2,158,985 | 2,158,985 | 2,266,935 | 2,266,935 |
| TOTAL EDUCATION EXPENDITURES | | \$77,088,125 | \$91,941,365 | \$80,773,697 | \$97,772,455 | \$95,064,455 |

**Program Summaries-
Board of Education Summary**

Board of Education Summary (continued)

| EDUCATION EXPENDITURE OBJECTS | PRIOR YEAR ACTUAL 2005-2006 | ORIGINAL BUDGET 2006-2007 | REVISED BUDGET 2006-2007 | BUDGET REQUEST 2007-2008 | JOINT BOARD APPROVED 2007-2008 |
|--------------------------------------|--|--|---|---|---|
| SALARIES | \$56,404,313 | \$59,072,555 | \$59,009,461 | \$61,856,135 | \$60,056,135 |
| CONTRACTUAL SERVICES | 4,710,890 | 4,793,686 | 4,806,835 | 5,475,304 | 5,475,304 |
| PURCHASED SERVICES | 8,660,433 | 8,293,694 | 8,282,429 | 8,566,016 | 8,566,016 |
| SUPPLIES & MATERIALS | 3,586,607 | 4,579,859 | 4,613,038 | 4,827,624 | 4,827,624 |
| CAPITAL OUTLAY- EQUIPMENT | 885,382 | 808,785 | 949,727 | 1,613,596 | 1,613,596 |
| MISCELLANEOUS/OTHER | 2,840,500 | 14,392,786 | 3,112,207 | 15,433,780 | 14,525,780 |
| TOTALS | \$77,088,125 | \$91,941,365 | \$80,773,697 | \$97,772,455 | \$95,064,455 |



Board of Education Members

Term Expiration Date

| | |
|-----------------------------------|----------|
| Barbara Y. Doyle, Chairman | 11/12/07 |
| Julie M. Luczkow, Vice Chairman | 11/12/07 |
| Kimberly A.B. Fabrizio, Secretary | 11/12/07 |
| Jane E. Anastasio | 11/12/07 |
| Kizzy G. Hernandez | 11/12/07 |
| Gloria J. Marino | 11/12/07 |
| Thomas P. O'Brien | 11/12/07 |
| Amy Coan | 11/12/07 |
| Christopher C. Wilson | 11/12/07 |

All Members are elected to a 4 year term.

Council Liaison (not a member) Council Member Minor