

BOARD OF EDUCATION SUMMARY

Michael Waste, Phd. Superintendent of School
Main Number: 584-7000

Service Narrative

The Bristol Public School system provides educational services ranging from pre-school programs through adult education programs. Within the system, there are ten elementary schools, which accommodate grades kindergarten through five; three middle schools, which provide programs for grades six, seven and eight; and two high schools, which are comprehensive high schools for grades nine through twelve.

In addition to these schools, alternative education programs are provided at the Bristol Community Senior Center. Bristol maintains an extensive special education program with a variety of services provided for handicapped and learning disabled students from pre-school to age twenty-one. Bristol's program for gifted and talented children includes special programs and resource services for students identified as gifted or talented in grades three through twelve. The academic program is complemented by a wide variety of extracurricular activities, including intramural and interscholastic sports, instrumental and vocal music programs, and many student organizations, which are available to all students.

The community is further served by a parochial school system of four elementary (K-8) schools and one high school. The Bristol Technical Educational Center is open to adults and high school students in grades 11 and 12, and is approved by veterans. Opportunities for post-secondary education in technical, professional and the liberal arts field abound in the area through both public and private schools. A regional community/technical college is situated one mile over the Bristol border in the town of Farmington and Central Connecticut State University is in nearby New Britain. Branches of the University of Connecticut and State technical colleges are located in both Waterbury and Hartford, twenty minutes away. Also available in the area are nursery schools and day care facilities, as well as Latchkey programs in all of the elementary schools in Bristol.

Miscellaneous Information

Education:	Number
High schools	2
Middle schools (6 th , 7 th and 8 th)	3
Elementary schools	10
High school students	2,735
Middle school students	2,087
Elementary students	4,206
Special education students	47
Teachers	676
Administrative and non-teaching personnel	402
Student enrollment as of 10/1/06	9,028

**Program Summaries-
Board of Education Summary**

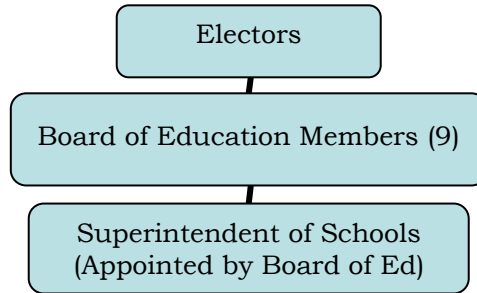
Board of Education Summary (continued)

BOARD OF EDUCATION FULL-TIME EMPLOYEES

Department	2004-2005	2005-2006	2006-2007
Board of Education	1,150	1,162	1,148
Total	1,150	1,162	1,148

Board of Education Bargaining Units	Employees Represented
Bristol Federal of Teachers Local 1464	679
Bristol Association of Principals & Supervisors	39
Bristol Educational Secretaries Association	76
Bristol Municipal Employees Local 2267 Board of Education Custodial, Maintenance & Health Aides and Teacher Aides Local 2267 Council No. 4 (Board of Education Cafeteria)	298
Bristol Association of Crossing Guards	28
Council 4	6
Non-Bargaining Employees	22
Total Board of Education Employees	1,148

Organizational Chart



Bristol Central High School on Wolcott Street, Bristol

**Program Summaries-
Education Summary**

Board of Education Summary (continued)

Budget Highlights

**CITY OF BRISTOL, CONNECTICUT
2006-2007
GENERAL FUND EXPENDITURE SUMMARY FOR EDUCATION**

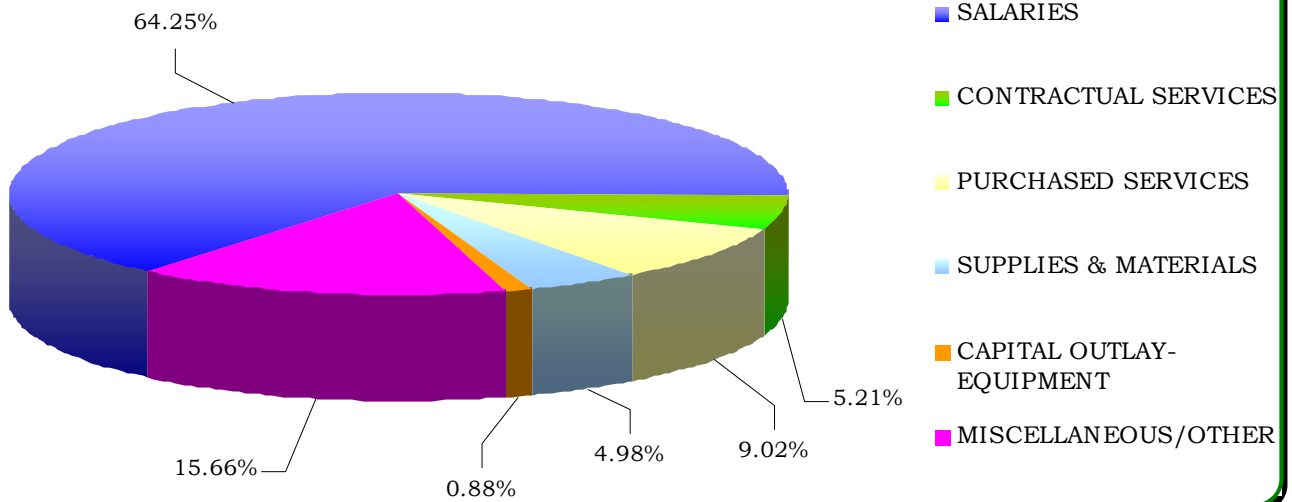
ORGCODE	DESCRIPTION	PRIOR YEAR ACTUAL 2004-2005	ORIGINAL BUDGET 2005-2006	REVISED BUDGET 2005-2006	BUDGET REQUEST 2006-2007	JOINT BOARD APPROVED 2006-2007
PA481	PUBLIC ACT 481	\$114,152	\$134,958	\$134,958	\$137,514	\$0
1100	REGULAR INSTRUCTION	10,222,339	10,462,518	11,204,466	11,437,134	11,437,133
1102	ART	1,318,803	1,407,533	1,407,533	1,459,496	1,457,492
1103	BUSINESS EDUCATION	720,067	745,002	741,170	670,394	670,394
1105	ENGLISH (GRADES 9-12)	3,908,327	4,228,364	4,227,614	4,211,583	4,211,583
1106	WORLD LANGUAGES (GRADES 7-12)	1,191,442	1,253,439	1,251,323	1,334,348	1,330,691
1108	HEALTH/LIFE SKILLS (GRADES 6-12)	352,940	348,261	347,198	604,518	604,518
1109	FAMILY & CONSUMER SCIENCE (6-12)	855,939	903,016	902,762	520,984	520,984
1110	TECHNOLOGY (GRADES 6-12)	1,240,282	1,318,659	1,318,123	1,359,530	1,356,010
1111	MATHEMATICS (GRADES 1-12)	2,336,215	2,476,236	2,467,106	2,849,835	2,846,835
1112	MUSIC (GRADES 1-12)	1,339,170	1,518,563	1,518,563	1,492,957	1,489,143
1113	SCIENCE (GRADES 1-12)	2,715,707	2,842,681	2,847,977	2,953,874	2,949,731
1114	LANGUAGE ARTS/ READING (GRADES 1-8)	903,019	911,150	923,523	811,171	800,850
1115	SOCIAL STUDIES (GRADES 1-12)	2,522,763	2,667,642	2,661,759	2,777,641	2,773,456
1116	PHYSICAL EDUCATION (GRADES K-12)	1,584,984	1,652,927	1,652,368	1,730,301	1,730,298
1117	VOCATIONAL EDUCATION	13,856	0	9,750	0	0
1120	ALTERNATIVE EDUCATION (GRADES 7-11)	348,099	365,627	365,627	334,463	334,463
1121	KINDERGARTEN	1,052,946	1,224,674	1,223,000	1,205,560	1,205,560
1122	PRESCHOOL PROGRAM	275,553	273,545	267,395	282,369	282,369
1200	SPECIAL EDUCATION	6,873,833	7,149,929	7,136,669	7,430,164	7,470,164
1260	E.S.L	331,957	405,413	405,413	430,993	430,993
1265	BILINGUAL	0	0	0	0	0
1270	GIFTED/ TALENTED	90,632	93,824	93,650	97,588	97,588
1300	ADULT CONTINUING EDUCATION	40,091	26,506	26,506	36,357	36,357
1310	ADULT BASIC EDUCATION	229,078	275,220	275,220	254,599	254,599
1400	SUMMER SCHOOL	32,307	49,957	49,957	51,213	51,213
2112	ATTENDANCE SERVICES	37,483	39,017	39,017	39,017	39,017
2113	SOCIAL WORK SERVICES	148,684	154,238	154,238	158,378	158,378
2120	GUIDANCE SERVICES	1,500,247	1,716,882	1,712,689	1,815,169	1,815,169
2122	IN-HOUSE SUSPENSION	6,030	0	10,000	30,000	30,000
2130	OTHER HEALTH SERVICES	534,401	501,299	501,299	615,585	6,090
2140	PSYCHOLOGICAL SERVICES	798,001	848,191	848,191	875,017	875,017
2150	SPEECH/ HEARING SERVICES	1,087,132	1,159,602	1,159,602	1,377,169	1,377,169
2190	TESTING	73,963	16,046	16,046	27,665	27,665
2210	INSTRUCTIONAL SERVICES/ STAFF DEV.	875,628	1,062,492	1,052,330	1,316,306	1,316,306
2221	EDUCATIONAL MEDIA SERVICES	530,443	541,504	541,504	573,000	573,000
2222	LIBRARY SERVICES	901,200	977,011	977,003	1,005,050	1,005,050
2223	AUDIO-VISUAL SERVICES	158,539	162,456	168,312	183,320	182,811
2225	COMPUTER INSTRUCTION SERVICES	1,074,152	1,087,245	1,185,279	1,351,184	1,153,697
2310	BOARD OF EDUCATION SERVICES	149,833	123,544	123,544	133,120	133,120
2317	STAFF RELATIONS/NEGOTIATIONS	18,848	21,000	21,000	21,000	21,000
2320	OFFICE OF THE SUPERINTENDENT	194,896	199,095	199,095	204,363	204,363
2321	ASSISTANT SUPERINTENDENT'S OFFICE	169,736	170,774	170,774	176,395	176,395
2329	PERSONNEL DEPARTMENT	312,848	314,929	314,929	324,589	324,589
2400	OFFICE OF PRINCIPAL SERVICES	4,077,143	4,284,693	4,304,057	4,648,217	4,638,215
2510	FISCAL SERVICES	3,788,586	14,645,654	3,920,654	15,976,006	15,431,585
2610	MAINTENANCE OF PLANT	1,997,789	2,110,148	2,111,781	2,388,283	2,388,283
2620	OPERATION OF BUILDING SERVICES	4,722,403	4,792,816	4,792,816	5,405,204	5,405,204
2700	STUDENT TRANSPORTATION (REIMB.)	3,514,802	3,680,605	3,680,025	3,865,085	3,865,085
2790	OTHER STUDENT TRANSPORTATION	136,407	133,900	133,900	141,750	141,750
2900	OTHER EDUCATIONAL COSTS	1,131,759	1,211,231	1,211,231	1,189,356	1,189,356
2902	PROGRAM/INSTRUCTIONAL IMPROVEMENTS	272,990	285,620	304,694	1,211,637	494,282
3200	ENTERPRISE OPERATIONS	197,607	361,120	358,340	357,820	357,820
3210	ATHLETICS	960,747	988,496	988,496	1,042,450	1,042,450
6110	TUITION TO CONNECTICUT SCHOOL DISTRICTS	968,825	1,290,000	1,090,000	1,067,090	1,067,090
6130	TUITION TO NON-PUBLIC SCHOOLS	2,154,922	1,893,918	2,093,918	2,158,985	2,158,985
TOTAL EDUCATION EXPENDITURES		\$73,110,545	\$87,509,170	\$77,644,394	\$94,152,796	\$91,941,365

**Program Summaries-
Board of Education Summary**

Board of Education Summary (continued)

EDUCATION EXPENDITURE OBJECTS	PRIOR YEAR ACTUAL 2005-2006	ORIGINAL BUDGET 2005-2006	REVISED BUDGET 2005-2006	BUDGET REQUEST 2006-2007	JOINT BOARD APPROVED 2006-2007
SALARIES	\$53,657,148	\$56,711,872	\$57,516,372	\$59,313,200	\$59,072,555
CONTRACTUAL SERVICES	4,347,486	4,415,023	4,323,536	5,365,510	4,793,686
PURCHASED SERVICES	7,829,358	8,135,936	8,190,820	8,293,694	8,293,694
SUPPLIES & MATERIALS	3,857,860	3,821,635	3,796,414	5,357,946	4,579,859
CAPITAL OUTLAY- EQUIPMENT	582,690	738,226	866,025	843,573	808,785
MISCELLANEOUS/OTHER	2,836,002	13,686,478	2,951,228	14,978,873	14,392,786
TOTALS	\$73,110,545	\$87,509,170	\$77,644,394	\$94,152,796	\$91,941,365

BOARD OF EDUCATION EXPENDITURE OBJECTS 2006-2007



Board of Education Members

Term Expiration Date

Barbara Y. Doyle, Chairman	11/12/07
Julie M. Luczkow, Vice Chairman	11/12/07
Kimberly A.B. Fabrizio, Secretary	11/12/07
Jane E. Anastasio	11/12/07
Kizzy G. Hernandez	11/12/07
Gloria J. Marino	11/12/07
Thomas P. O'Brien	11/12/07
Nancy Beardsley	11/12/07
Christopher C. Wilson	11/12/07

All Members are elected to a 4 year term.

Council Liaison (not a member) Council Member Minor